



Single Family

Priced From

**\$449,990**

**2 - 3 Beds**

**2 Baths**

**1,409 - 1,510 Sq Ft**

**COMMUNITY CONTACT**

9 REEDGRASS WAY  
 GETTYSBURG, PA 17325  
 717-500-3767  
 INFO@CARUSOHOMES.COM

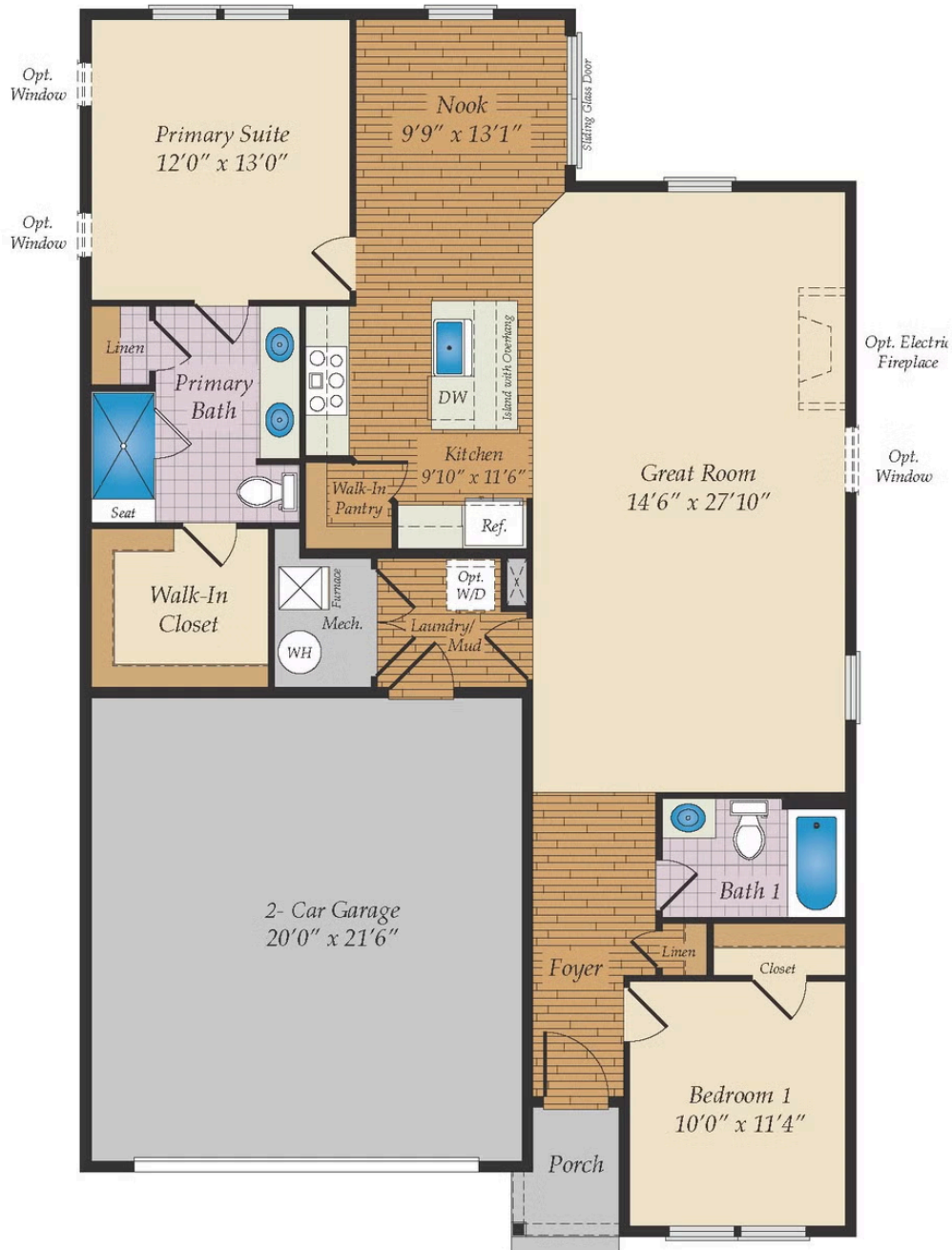
## Available to build on COTTAGE HOMESITES

For those who want a smaller home with a big personality, the Osmond makes great use of space within a smaller footprint. The open floor plan includes an oversize great room measuring in at a whopping 14' x 28', which you can keep as open living area or close off a portion to create a 3rd bedroom, a home office or finished storage space. The kitchen features a center island, walk-in pantry and breakfast nook with a slider that opens to an optional patio, screened porch or sunroom. The primary suite includes an ensuite bath with double sinks, walk-in shower and a large walk-in closet. An extra bedroom and full bath for guests and laundry/mud room leading to a 2-car garage complete the home.

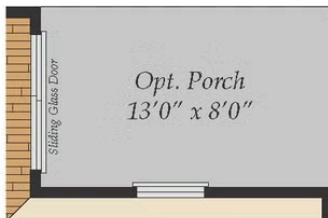
## Available Elevations



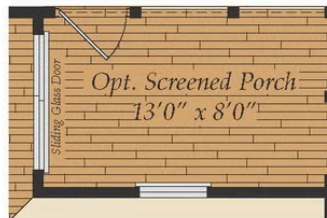
## FIRST FLOOR



## ADDITIONAL OPTIONS



OPT. PORCH



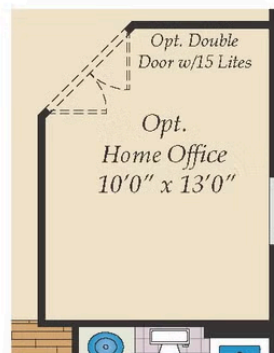
OPT. SCREENED PORCH



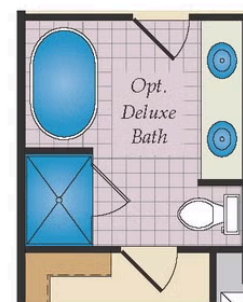
OPT. MORNING ROOM



OPT. BEDROOM 2



OPT. HOME OFFICE



OPT. DELUXE BATH