



2 - 4 Beds

2 - 3 Baths

2,057 - 2,925 Sq Ft

COMMUNITY CONTACT

9 REEDGRASS WAY
 GETTYSBURG, PA 17325
 717-500-3767
 INFO@CARUSOHOMES.COM

Available to build on our CLASSIC HOMESITES

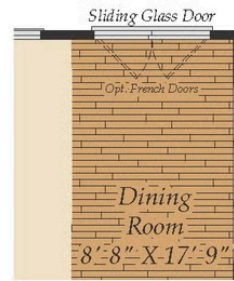
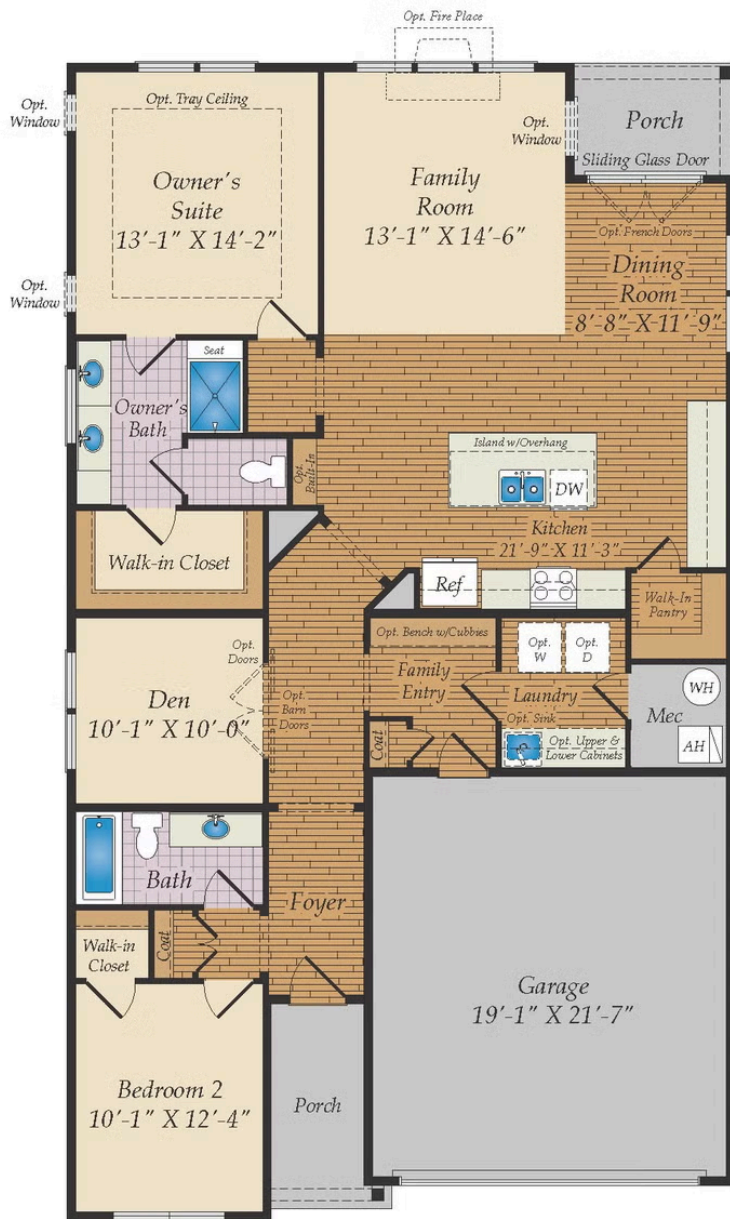
The Kelloway II builds upon the timeless design of the original Kelloway, offering refined details and expanded living spaces. The layout features a large living space with an open flow between the family room, dining room, and kitchen, perfect for entertaining. The main level also features a large primary suite, a guest room with a full bath, and a den. Add a sky basement for additional space and storage. There are numerous options available to personalize this home, such as adding a sky basement for additional space and storage, as well as a screened porch or sunroom for enhanced outdoor enjoyment.

Available Elevations

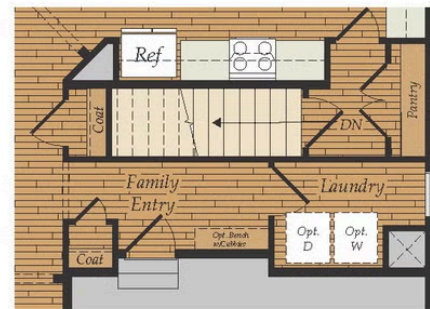


Brick/stone fronts, chimneys, bay windows, keystones, exterior trim, garage doors, light fixtures, dormers, and gables shown on elevations are optional features. Actual product specifications may vary in dimension or detail from these drawings. This insert is for illustrative purposes only and is not part of the legal contract. All dimensions are approximate. Many available options are not shown.

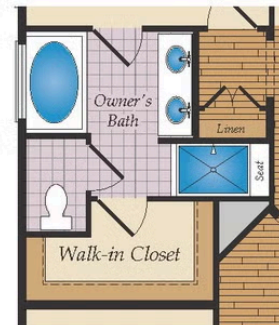
FIRST FLOOR



OPT. EXTENDED DINING ROOM

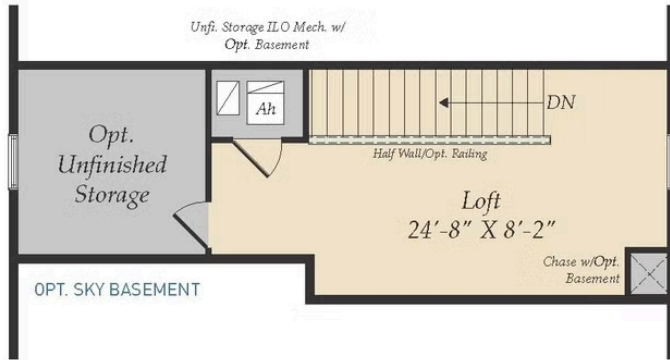


1ST FLOOR W/ OPT. BASEMENT
 (BASEMENT NOT AVAILABLE AT AMBLEBROOK, PA)

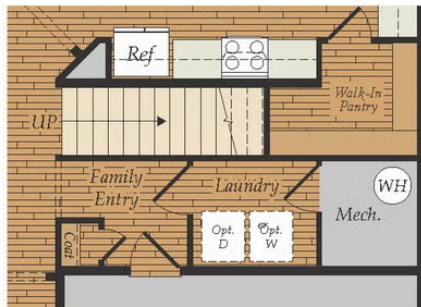


OPT. OWNER'S BATH W/TUB & SHOWER

OPTIONAL SKY BASEMENT & ADDITIONAL FEATURES



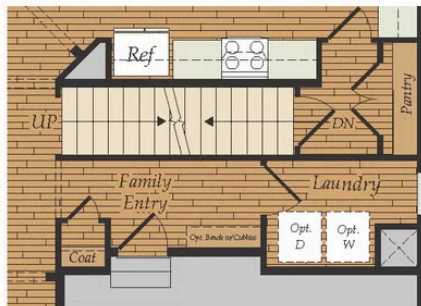
OPT. COVERED CONCRETE PATIO



1ST FLOOR W/ OPT. SKY BASEMENT



T. SUNROOM



1ST FLOOR W/ OPT. SKY BASEMENT & BASEMENT
(BASEMENT NOT AVAILABLE AT AMBLEBROOK, PA)



OPT. SCREENED PORCH