



Priced From
\$549,990

2 - 4 Beds

2 - 3 Baths

2,057 - 2,925 Sq Ft

COMMUNITY CONTACT

9 REEDGRASS WAY
 GETTYSBURG, PA 17325
 717-500-3767
 INFO@CARUSOHOMES.COM

Available to build on our CLASSIC HOMESITES

The Kellaway II builds upon the timeless design of the original Kellaway, offering refined details and expanded living spaces. The layout features a large living space with an open flow between the family room, dining room, and kitchen, perfect for entertaining. The main level also features a large primary suite, a guest room with a full bath, and a den. Add a sky basement for additional space and storage. There are numerous options available to personalize this home, such as adding a sky basement for additional space and storage, as well as a screened porch or sunroom for enhanced outdoor enjoyment.

Available Elevations



Elevation 30

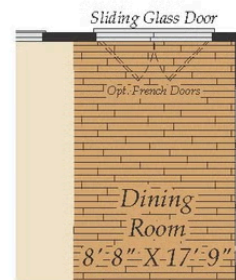
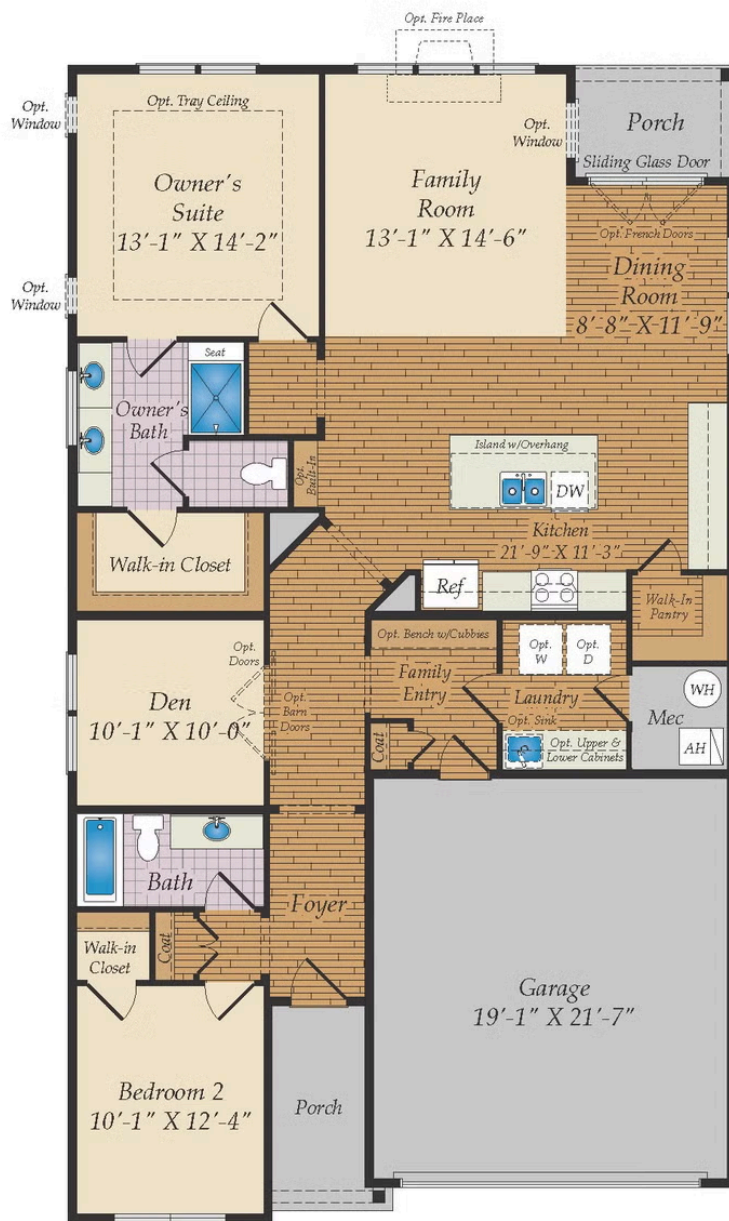


Elevation 31

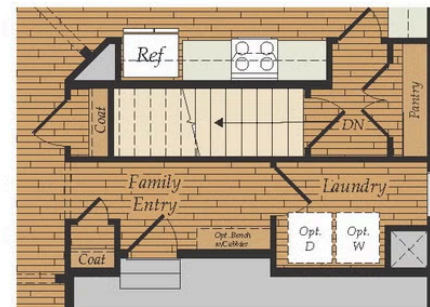


Elevation 32

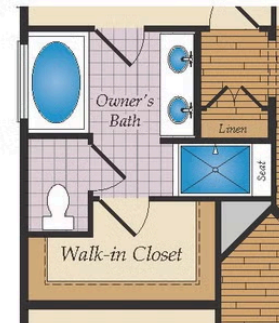
FIRST FLOOR



OPT. EXTENDED DINING ROOM



1ST FLOOR W/ OPT. BASEMENT
(BASEMENT NOT AVAILABLE AT AMBLEBROOK, PA)



OPT. OWNER'S BATH W/TUB & SHOWER

OPTIONAL SKY BASEMENT & ADDITIONAL FEATURES

