



2 - 4 Beds

2 - 3 Baths

1,793 - 2,562 Sq Ft

COMMUNITY CONTACT

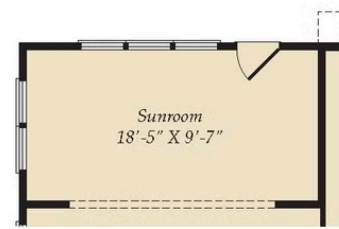
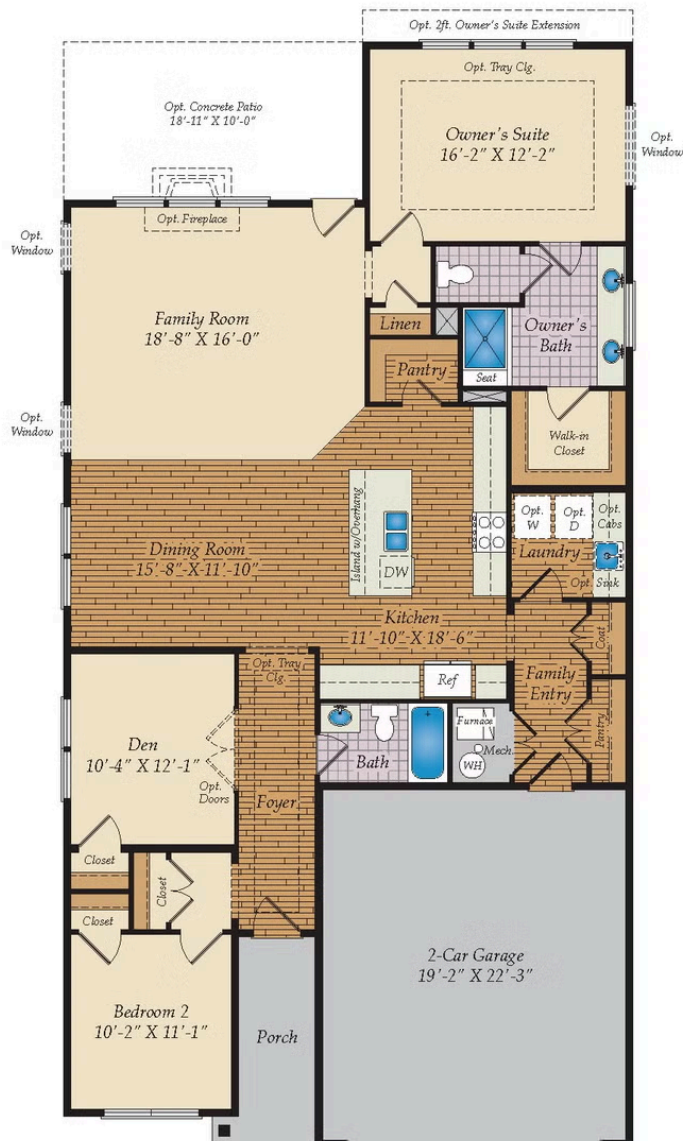
9 REEDGRASS WAY
 GETTYSBURG, PA 17325
 717-500-3767
 INFO@CARUSOHOMES.COM

The Ives offers cottage-style charm tailored for Active Adults seeking the ease of single-level living. Its thoughtfully designed open floor plan creates a seamless connection between the family room, dining room, and kitchen—an ideal setting for gatherings and everyday comfort. The main level includes a spacious primary suite, a guest room with full bath, and a versatile den/3rd bedroom. For those who desire more room, add a second floor sky basement for additional storage and living space or even a 4th bedroom. Personalization options abound, from adding a screened porch or sunroom to enhance outdoor living, to personalizing features that make this home uniquely yours.

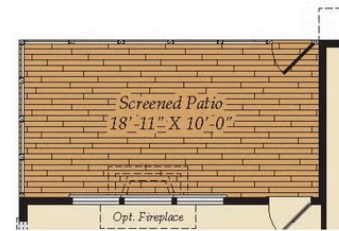
Available Elevations



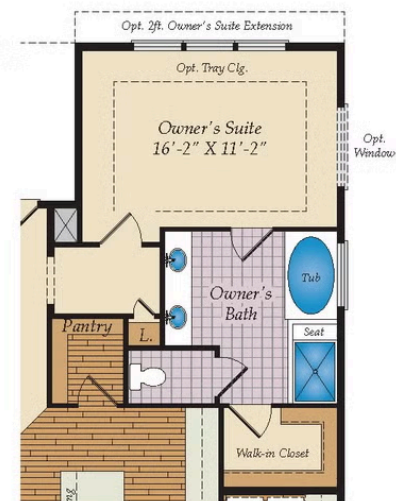
FIRST FLOOR



OPT. SUNROOM

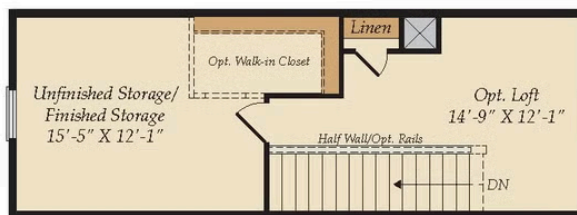


OPT. SCREENED PORCH

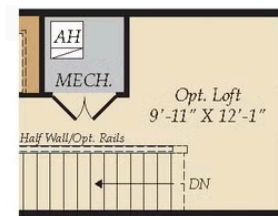


OPT. OWNER'S BATH W/
TUB & SHOWER

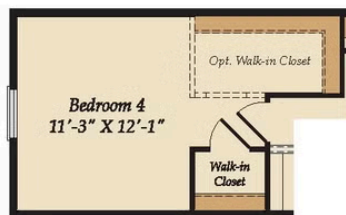
OPT. SKY BASEMENT



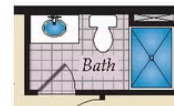
OPT. SKY BASEMENT W/BASEMENT CONDITION
(BASEMENT NOT AVAILABLE AT AMBLEBROOK, PA)



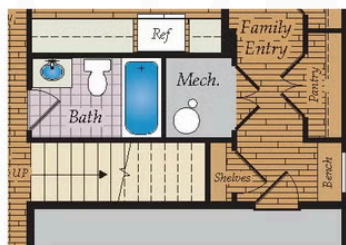
OPT. SKY BASEMENT W/
NO BASEMENT CONDITION



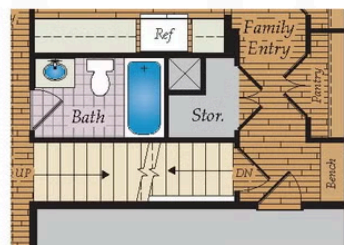
OPT. BEDROOM 4



OPT. BATH



OPT. STAIRS TO OPT. SKY BASEMENT



OPT. STAIRS TO OPT. SKY BASEMENT & OPT. BASEMENT
(BASEMENT NOT AVAILABLE AT AMBLEBROOK, PA)