



2 - 4 Beds

2.5 - 3.5 Baths

1,966 - 4,850 Sq Ft

COMMUNITY CONTACT

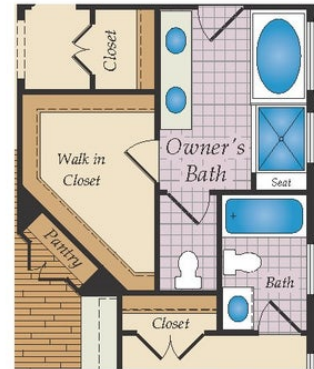
9 REEDGRASS WAY
 GETTYSBURG, PA 17325
 717-500-3767
 INFO@CARUSOHOMES.COM

The Hayes is a cottage-style home that is part of our First Floor Owners Suite series. This particular floorplan comes with an included 4' Owner's Suite Extension & Optional 2' Guest Bedroom Extension. The layout features one-level living with an open floorplan, a large owner suite, a guest room and den. Add additional living space with the option to add a second floor with a loft and 2 bedrooms or add a sky basement for additional storage. Plenty of options are available to personalize this home.

Available Elevations



FIRST FLOOR



OPT. OWNER'S
TUB AND SHOWER

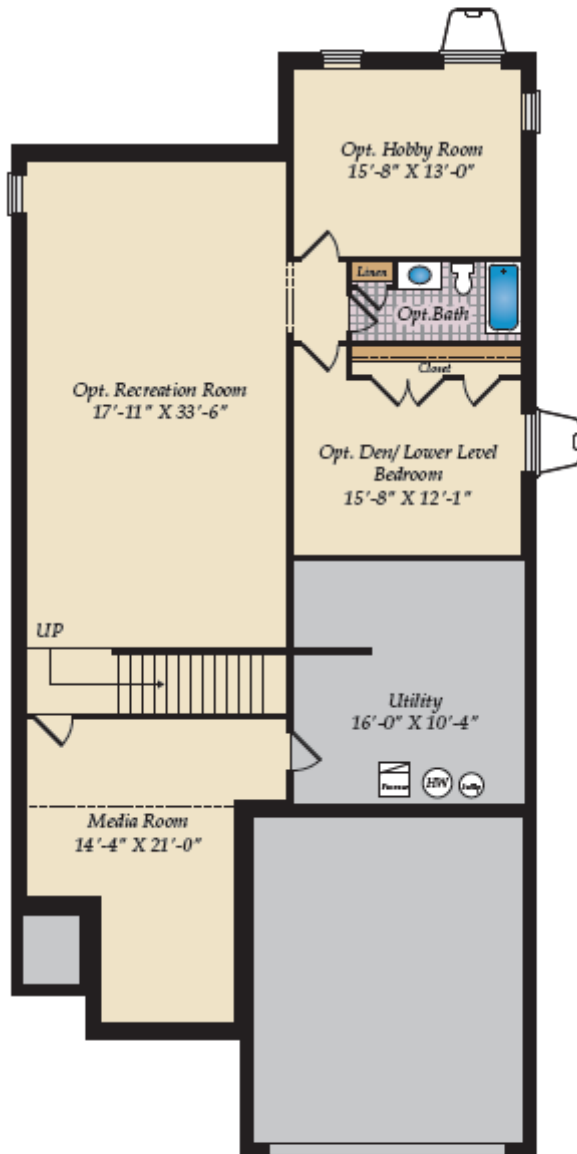


OPT. OWNER'S
WALK IN SHOWER

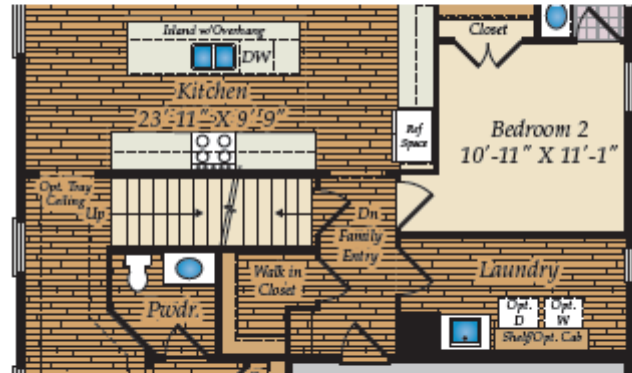


OPT. BEDROOM 3 WITH
FULL BATH

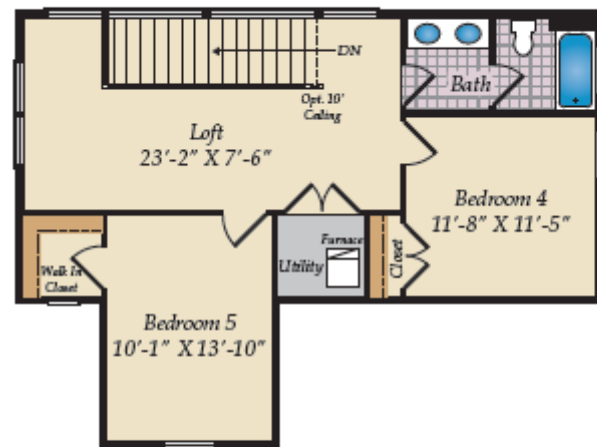
OPTIONAL SKY BASMENT AND OPTIONAL BASMENT



OPT. FINISHED BASEMENT
(BASEMENT NOT AVAILABLE AT AMBLEBROOK, PA)



OPT. 1ST FLOOR W/OPTIONAL BASEMENT & OPT. SKY BASEMENT
(BASEMENT NOT AVAILABLE AT AMBLEBROOK, PA)



OPT. SKY BASEMENT



410-928-1161

Concrete Patio
19'-0" X 11'-4"

Sliding Glass Door

Opt. Door

Sliding Glass Door

Opt. Hobby Room

Diagram of a Screened Porch, 19' 0" X 11' 4". The diagram shows a rectangular porch with a screen on the top and left sides. The dimensions are 19' 0" by 11' 4". An "Opt. Door" is indicated on the right side. The porch is surrounded by a deck.

Sunroom
17'-11" X 10'-11"

Opt.
Door

Diagram of the Opt. Hobby Room. The room features a sliding glass door labeled "Sliding Glass Door" and "UP" with an upward arrow, leading to a deck area. The deck includes a hot tub and stairs leading up to a higher level.



EQUAL HOUSING
OPPORTUNITY