

Single Family

Priced From

\$539,990

2 - 5 Beds

2.5 - 4 Baths

2,036 - 3,114 Sq Ft

COMMUNITY CONTACT

9 REEDGRASS WAY
 GETTYSBURG, PA 17325
 717-500-3767
 INFO@CARUSOHOMES.COM

The Hayes is a cottage-style home that is part of our First Floor Owners Suite series. This particular floorplan comes with an included 4' Owner's Suite Extension & Optional 2' Guest Bedroom Extension. The layout features one-level living with an open floorplan, a large owner suite, a guest room and den. Add additional living space with the option to add a second floor with a loft and 2 bedrooms or add a sky basement for additional storage. Plenty of options are available to personalize this home.

Available Elevations



Hayes Elevation 30 – Shown with Stone Water table

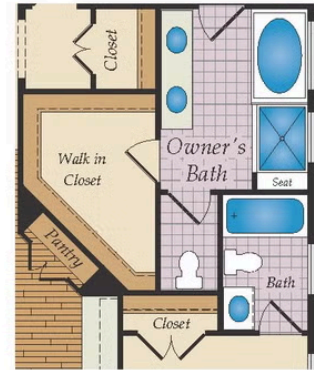
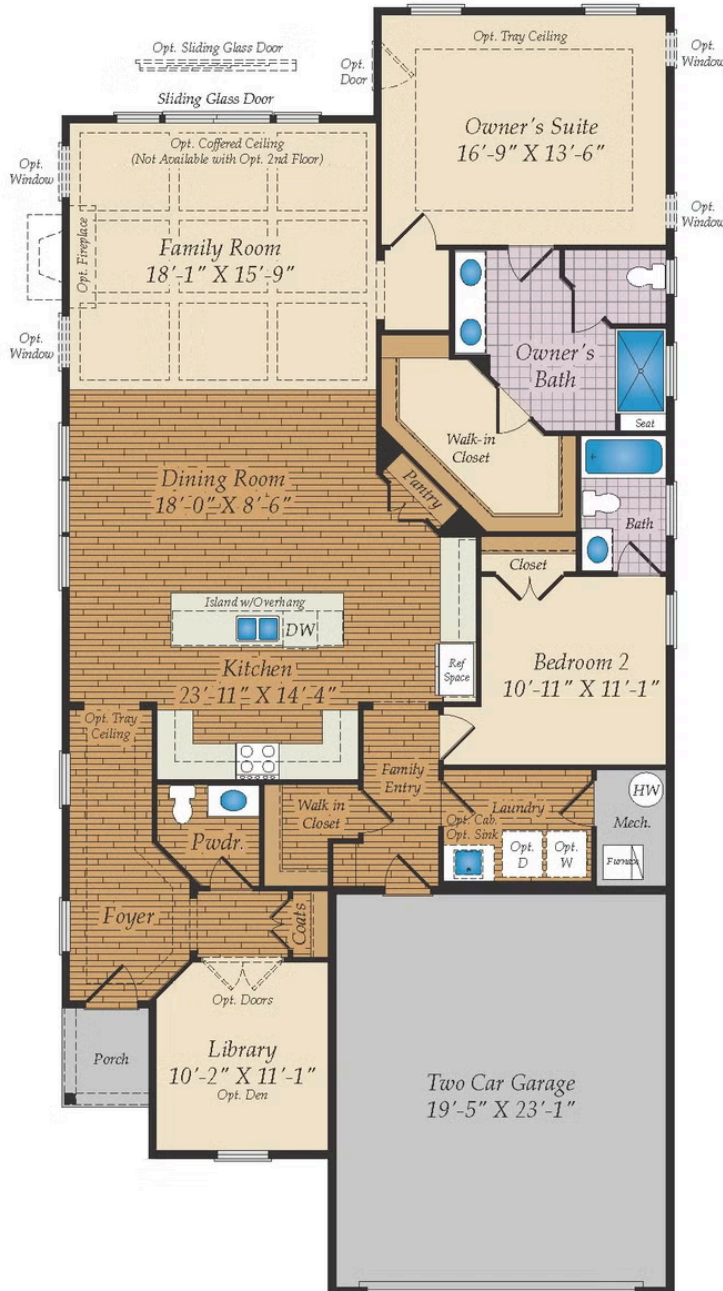


Hayes Elevation 31 – Shown with Stone Water table



Hayes Elevation 50 – Shown with Stone Water table & Opt. Metal Roof

FIRST FLOOR



OPT. OWNER'S
TUB AND SHOWER

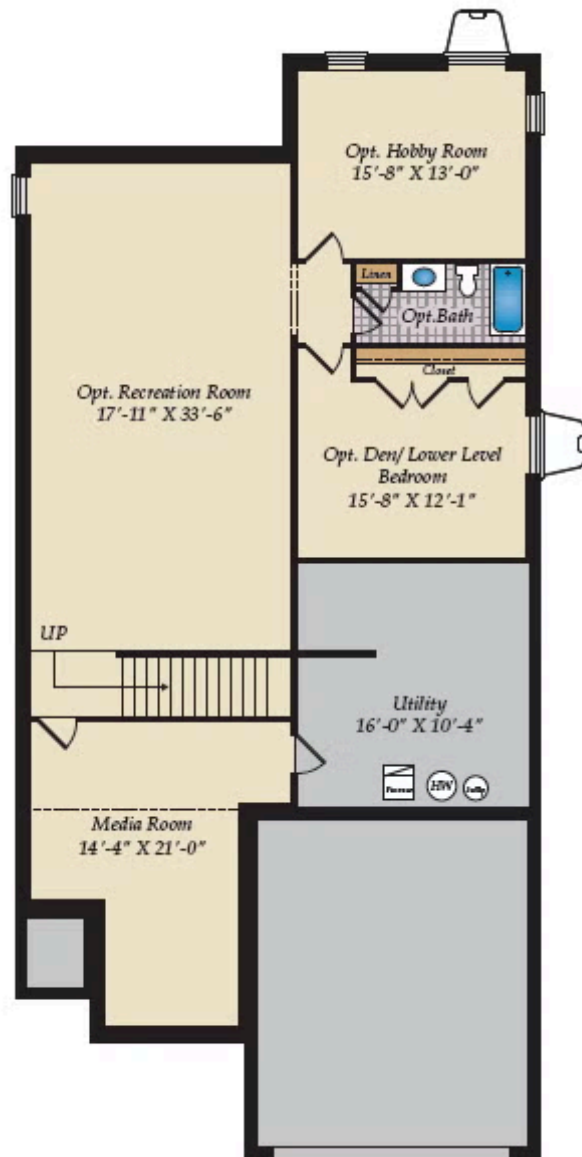


OPT. OWNER'S
WALK IN SHOWER

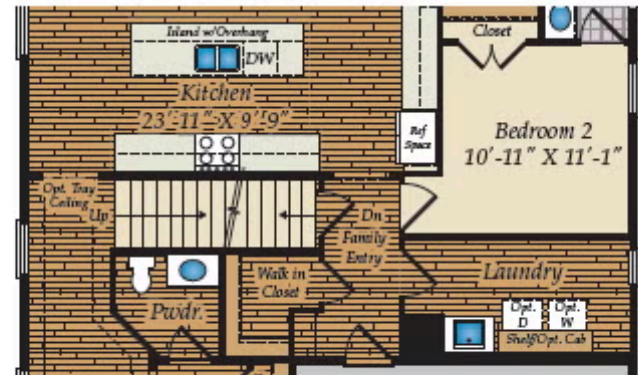


OPT. BEDROOM 3 WITH
FULL BATH

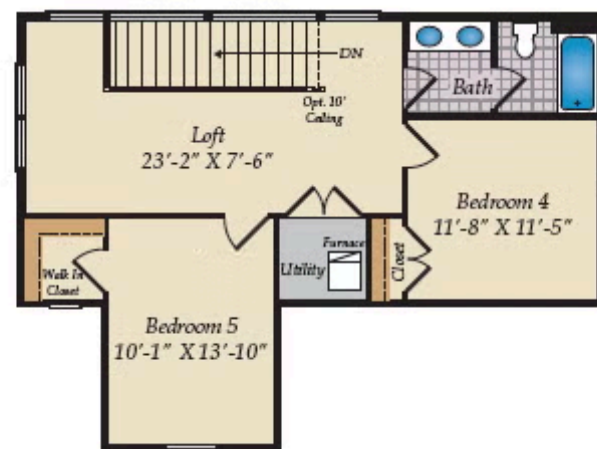
OPTIONAL SKY BASMENT AND OPTIONAL BASMENT



OPT. FINISHED BASEMENT
(BASEMENT NOT AVAILABLE AT AMBLEBROOK, PA)



OPT. 1ST FLOOR W/OPTIONAL BASEMENT & OPT. SKY BASEMENT
(BASEMENT NOT AVAILABLE AT AMBLEBROOK, PA)

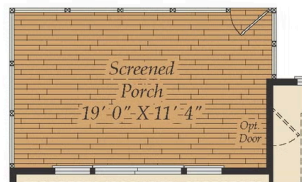


OPT. SKY BASEMENT

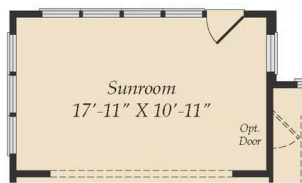
OTHER OPTIONS



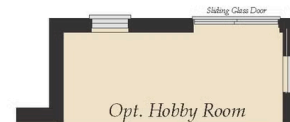
OPT. CONCRETE PATIO



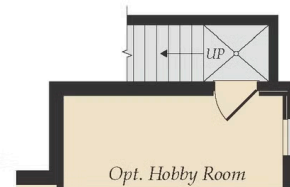
OPT. SCREENED PORCH



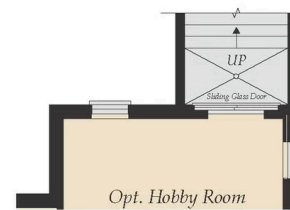
OPT. SUNROOM



OPT. WALKOUT BASEMENT



OPT. SINGLE AREAWAY



OPT. DOUBLE AREAWAY