



2 - 5 Beds

2.5 - 4 Baths

1,966 - 3,044 Sq Ft

COMMUNITY CONTACT

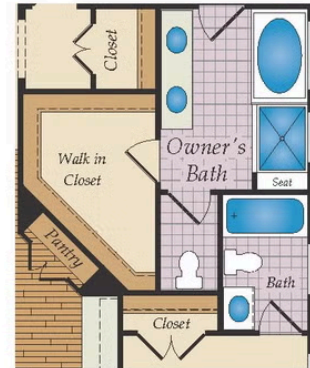
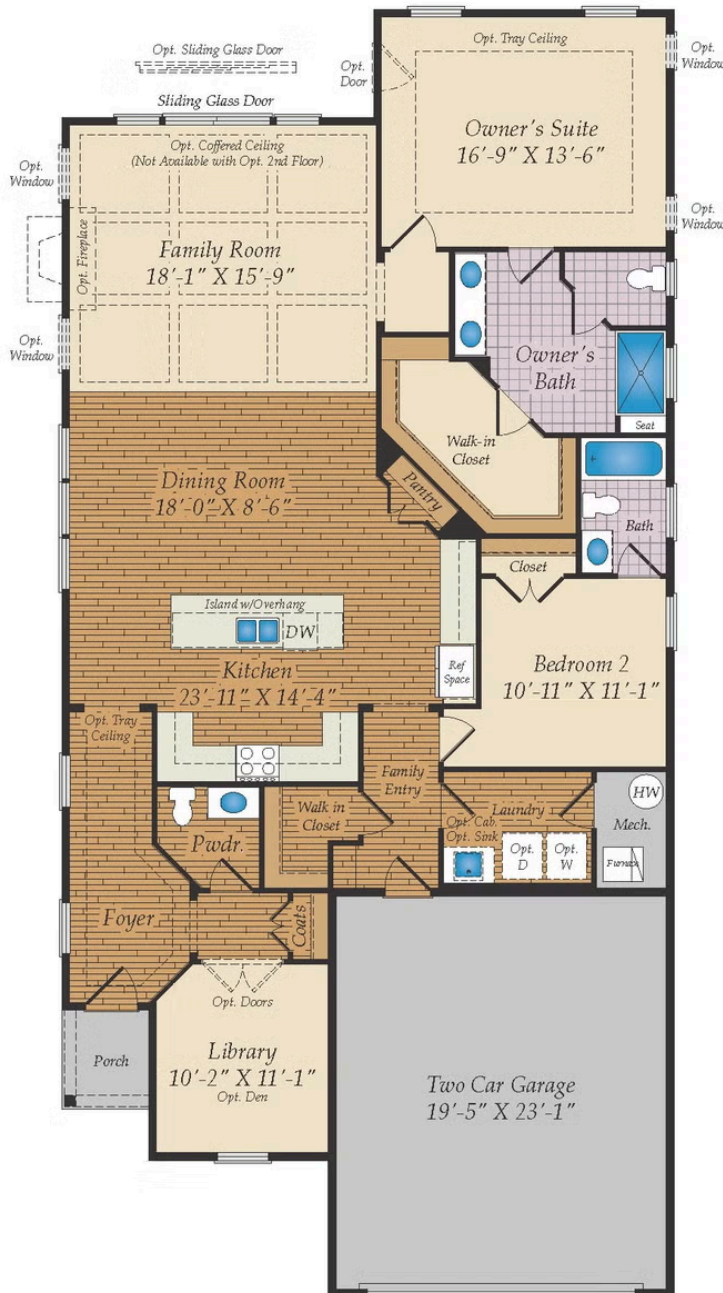
9 REEDGRASS WAY
 GETTYSBURG, PA 17325
 717-500-3767
 INFO@CARUSOHOMES.COM

The cottage version of our popular Hayes plan offers the same charming design as the original in a more streamlined and affordable layout. As part of our first-floor owner series, the plan delivers true one-level living with an easy flow. The main level includes a spacious living area with a large kitchen, dining area and great room, along with a comfortable owner's suite, guest room and a den. Add additional living space with the option to add a second floor with a loft and 2 bedrooms or add a sky basement for additional storage. Plenty of options are available to personalize this home.

Available Elevations



FIRST FLOOR



OPT. OWNER'S
TUB AND SHOWER

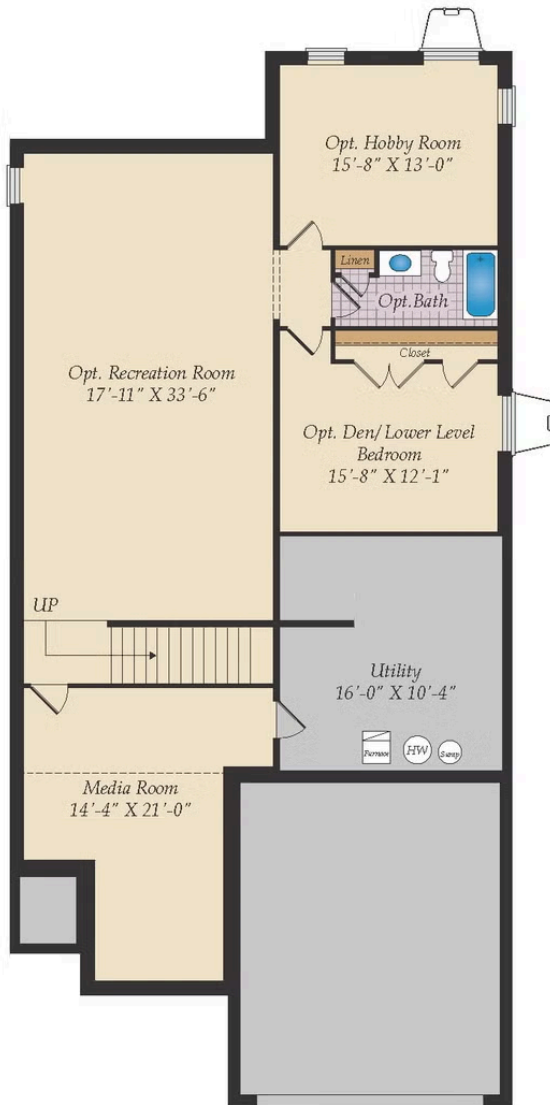


OPT. OWNER'S
WALK IN SHOWER

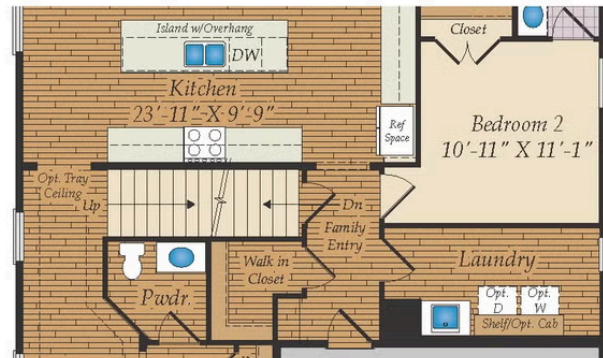


OPT. BEDROOM 3 WITH
FULL BATH

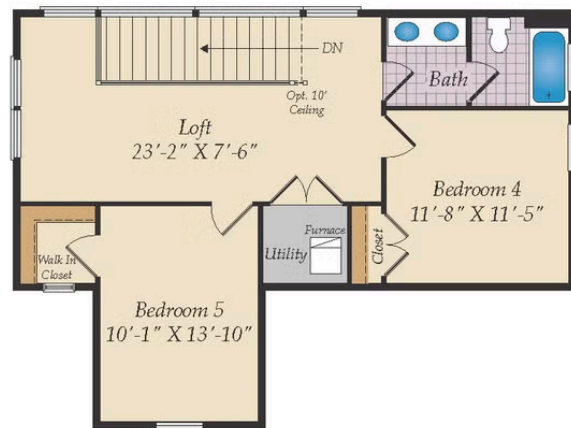
OPTIONAL SKY BASMENT AND OPTIONAL BASMENT



OPT. FINISHED BASEMENT



OPT. 1ST FLOOR W/OPTIONAL BASEMENT &
OPT. SKY BASEMENT

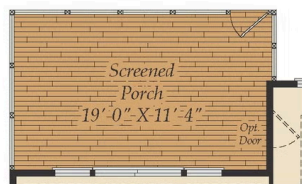


OPT. SKY BASEMENT

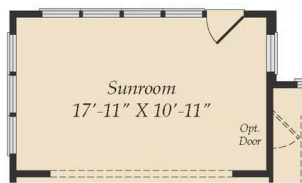
OTHER OPTIONS



OPT. CONCRETE PATIO



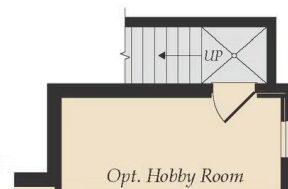
OPT. SCREENED PORCH



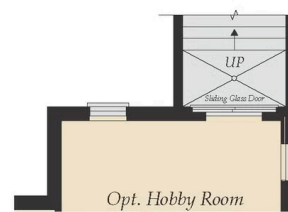
OPT. SUNROOM



OPT. WALKOUT BASEMENT



OPT. SINGLE AREAWAY



OPT. DOUBLE AREAWAY