



2 Beds

2.0 Baths

1771 Sq Ft

ADDRESS

48 BROOMSEDGE LANE - HOMESITE 233
GETTYSBURG, PA 17325

SALES CONTACT

717-500-3767
INFO@CARUSOHOMES.COM

The Ives is a cottage-style home that features one-level living with an open floorplan, a large owner suite, a guest room and den. This particular home includes a 2' extension in the owners suite, sky basement with loft and storage for additional space. Also featured in this home is a family entrance bench with cubbies, screened-in-patio, gas fireplace in family room, stainless steel gas appliances, and a craftsman trim package upgrade. Photos of similar home are for representation only and may include options and upgrades not included in the package price. See sales manager for details.

Home Elevation



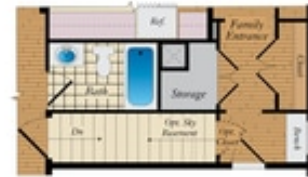
FIRST FLOOR



Brick/stone fronts, chimneys, bay windows, keystones, exterior trim, garage doors, light fixtures, dormers, and gables shown on elevations are optional features. Actual product specifications may vary in dimension or detail from these drawings. This insert is for illustrative purposes only and is not part of the legal contract. All dimensions are approximate. Many available options are not shown.



OPTIONAL SKY BASEMENT



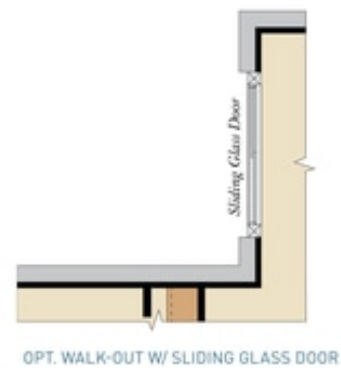
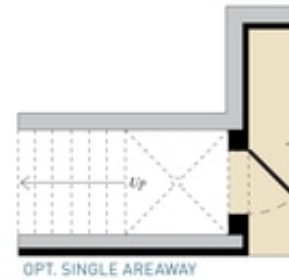
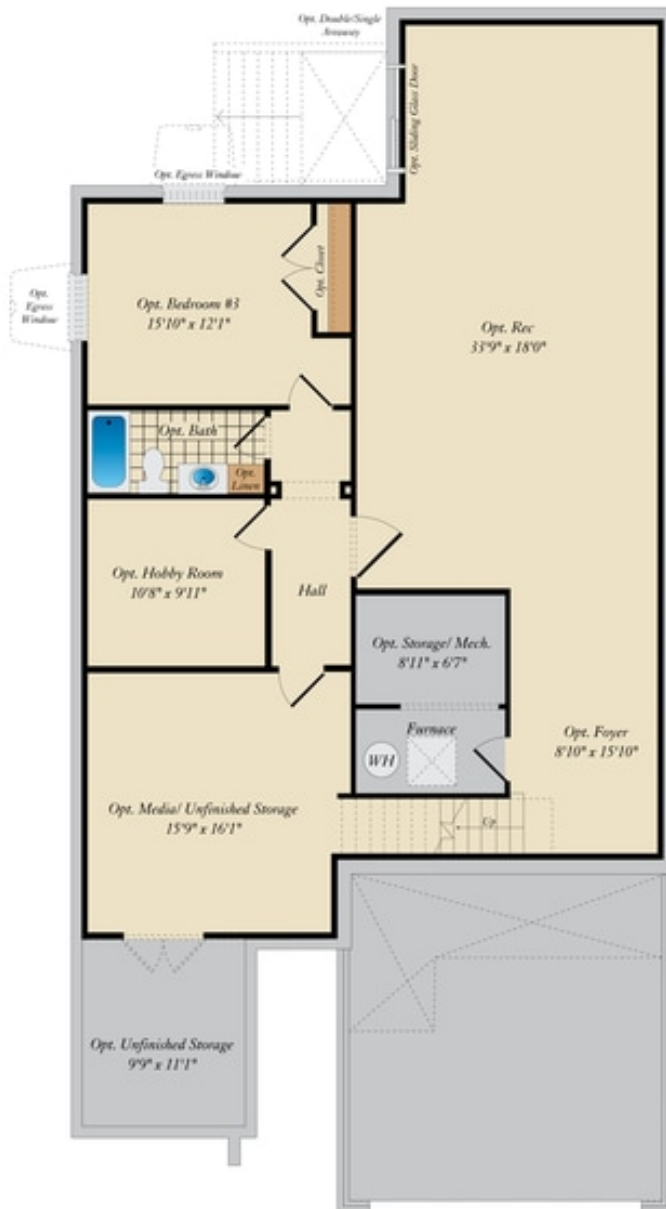
FIRST FLOOR PLAN W/ OPT. BASEMENT



OPT. SKY BASEMENT SECOND FLOOR PLAN

Brick/stone fronts, chimneys, bay windows, keystones, exterior trim, garage doors, light fixtures, dormers, and gables shown on elevations are optional features. Actual product specifications may vary in dimension or detail from these drawings. This insert is for illustrative purposes only and is not part of the legal contract. All dimensions are approximate. Many available options are not shown.

OPT. FINISHED BASEMENT



Brick/stone fronts, chimneys, bay windows, keystones, exterior trim, garage doors, light fixtures, dormers, and gables shown on elevations are optional features. Actual product specifications may vary in dimension or detail from these drawings. This insert is for illustrative purposes only and is not part of the legal contract. All dimensions are approximate. Many available options are not shown.

ADDITIONAL FEATURES

