



**4 - 5 Beds**

**3.5 - 5 Baths**

**2,922 - 4,179 Sq Ft**

**COMMUNITY CONTACT**

3720 CLUBHOUSE DRIVE  
FAYETTEVILLE, PA 17222

NONE

NONE

The Seahawk is a stunning home designed to take in the views. The plan starts at 2,755 sq. ft. with options to expand up to 4,425 sq. ft. and an open floor plan on the main level. Upgrades are available throughout the home including a gourmet kitchen, sunroom, a flexible room that could be a home office, first floor master, or in-law suite, and decks on every level. Choose from multiple second floor layouts to personalize the home for your family. An optional 3rd floor loft and deck provides even more space for entertaining or just enjoying a quiet sunset.

## Available Elevations



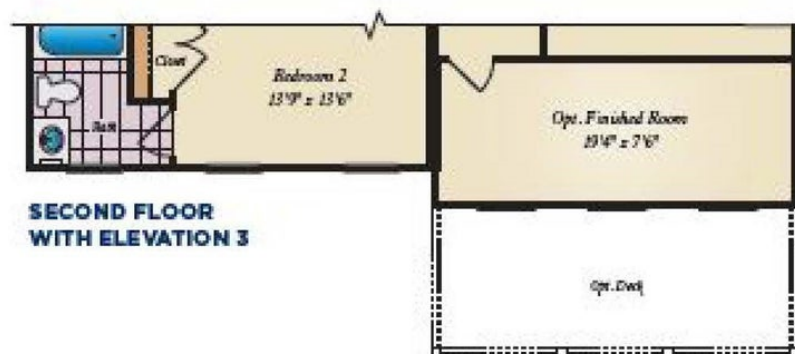
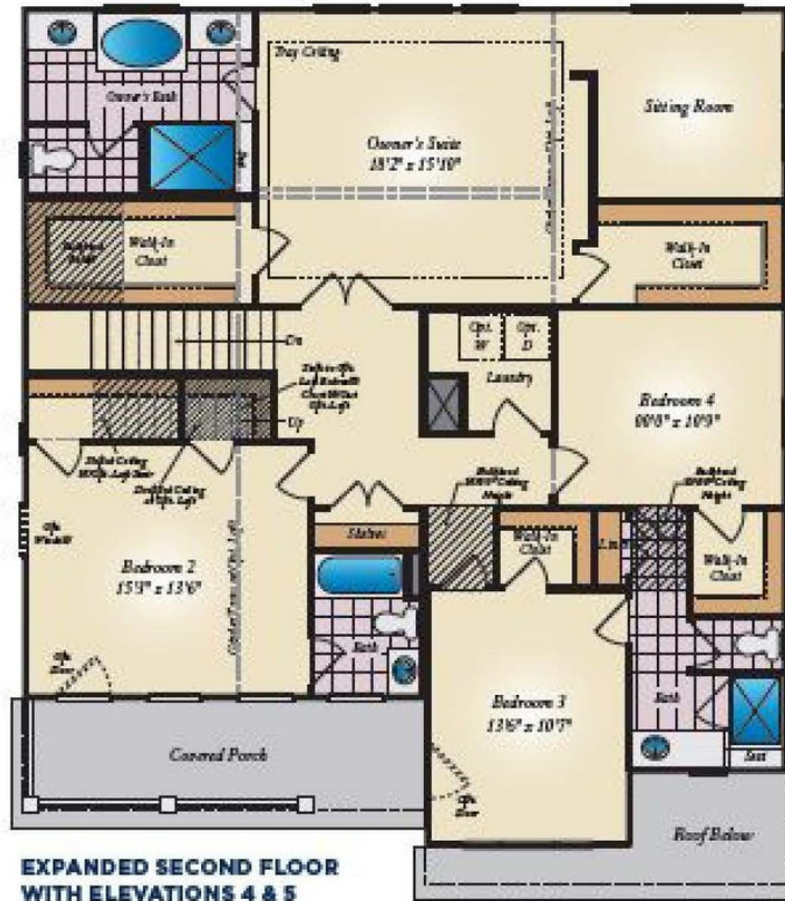
## FIRST FLOOR



**STANDARD FIRST FLOOR WITH ELEVATIONS 1 & 2**

## SECOND FLOOR

Alternate second floor plan available.  
Please visit our floor plan designer to view.

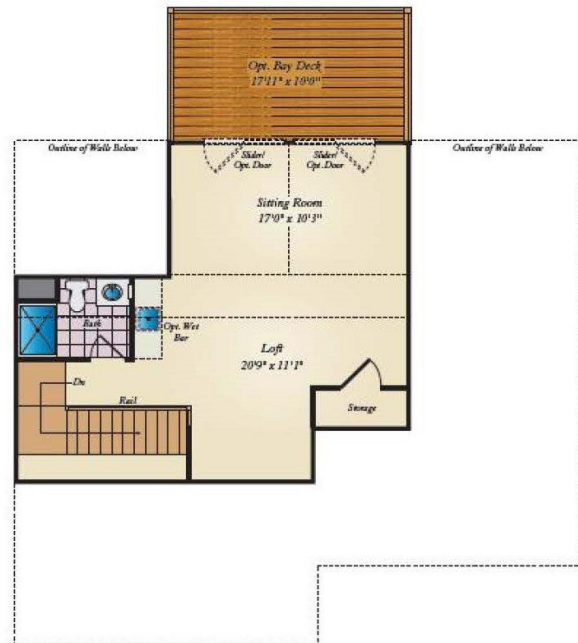




## OPTIONAL LOFT



**OPT. LOFT PLAN**



**OPT. LOFT PLAN  
WITH OPT. SITTING ROOM**