

3 Beds

3.0 Baths

2160 Sq Ft

ADDRESS

807 PARC TOWNES DRIVE - HOMESITE 27
 WENDELL, NC 27591

Welcome to our 3 story Linville townhome plan, soon to be available at our new Parc Townes at Wendell community! The front porch leads to the foyer and 1 car garage. The lower level features a finished recreational room with powder room. The stairs lead to the very open first floor. The kitchen has a large island, spacious pantry and stainless steel appliances, and opens directly into the dining room. There is a spacious great room is perfect for relaxing and unwinding. Enjoy those sunrises on your deck while sipping your morning coffee. A powder room and coat closet are also located on the first floor. The second floor features an owner's suite with an en-suite bath walk in closet. There are two more, generously sized bedrooms on the first floor and a full bath with tub and shower combo. Views from this home offer partial trees with a view of the Wendell Country Club golf course. Interior photos are for representational purposes only. Contact our New Home Sales Consultants for a full list of included features.

*Pricing conditioned upon the review and approval of the builder, developer, lender and county. To receive incentives, purchaser must use Caruso Homes ...

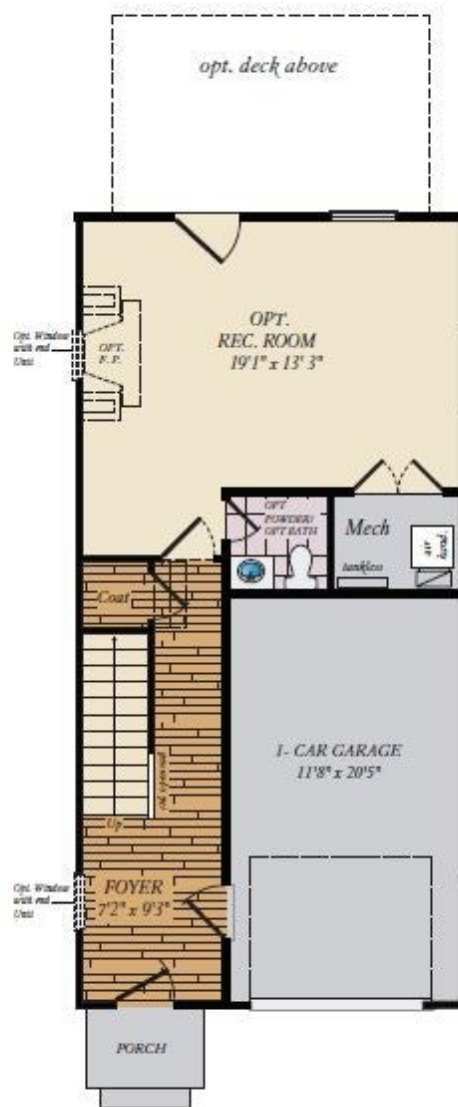
Home Elevation



or trim, garage doors, light fixtures, dormers, and gables shown on these drawings. This insert is for illustrative purposes only and is not shown.



LOWER LEVEL



FIRST FLOOR



SECOND FLOOR

