



**3 - 4 Beds**

**2.5 - 4 Baths**

**1,982 - 2,791 Sq Ft**

**COMMUNITY CONTACT**

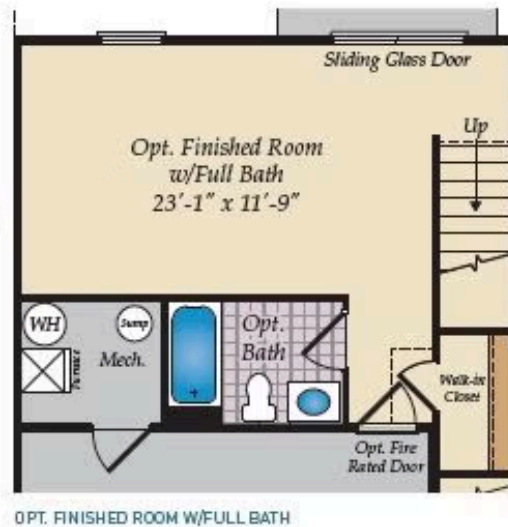
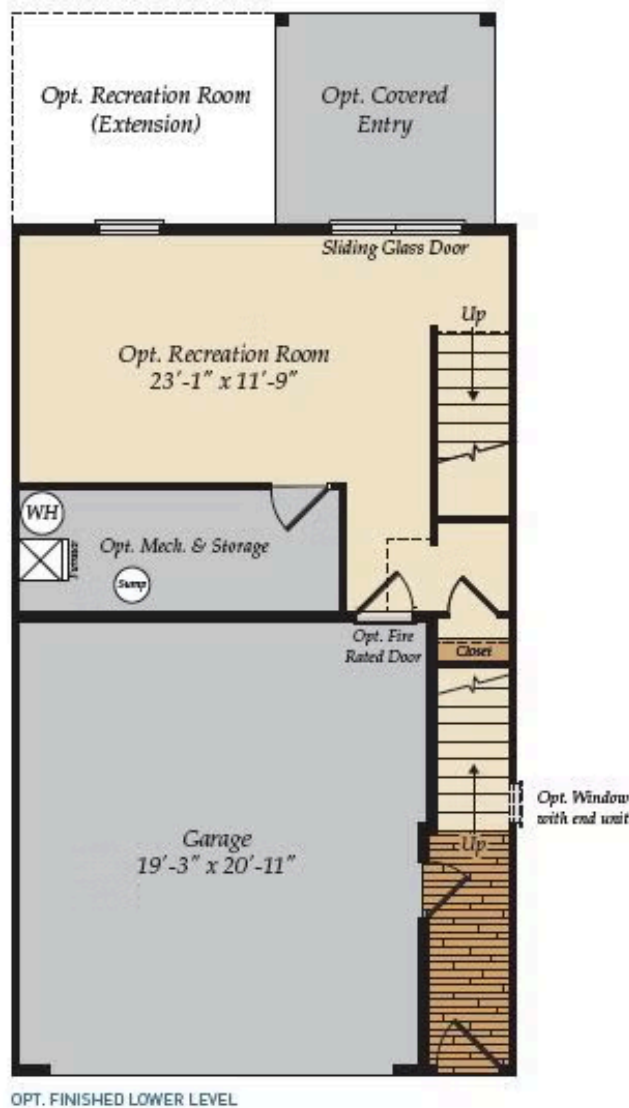
801 PARC TOWNES DRIVE (GPS:  
INTERSECTION OF WENDELL FALLS  
PKWY & JAKE MAY DR)  
WENDELL, NC 27591  
919-213-7778  
INFO@CARUSOHOMES.COM

Our brand new Pamlico floorplan features 3 stories and a 2 car garage! The great room, kitchen and dining room all connect to create a flowing, open floorplan. The kitchen has Whirlpool appliances, a large island and optional kitchen backsplash. The great room has optional additional features, including a fireplace and coffered ceiling, and attaches to a large deck. A sunroom is an also additional feature that can be added to the first floor. The owner's suite is located on the second floor. It has a huge walk-in closet and the owner's bath includes a shower, double sink and linen closet. There is an option to extend the owner's suite, add a whole separate section to the walk-in closet and switch out the traditional owner's bath with a spa bath. The spa bath has a walk-in shower, and either a double sink and free standing tub, or two separate vanities. The second floor features two additional bedrooms, full bathroom and laundry room. There is a 2 car garage and unfinished storage on the lower level with TONS of options! The storage can be turned into a recreational room with powder room, or make it an additional finished room with full ...

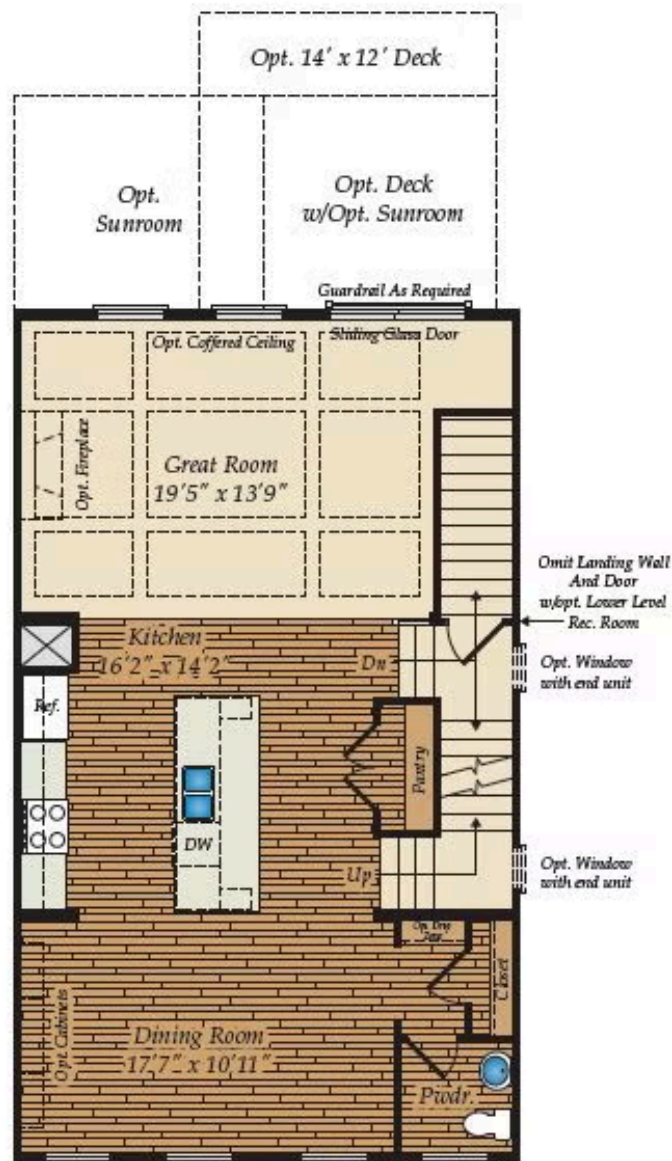
## Available Elevations



## LOWER LEVEL



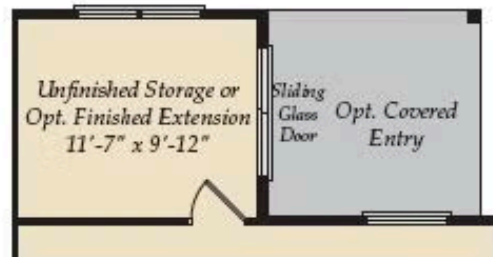
## FIRST FLOOR



## SECOND FLOOR



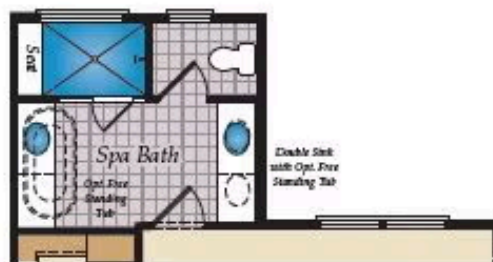
## OTHER OPTIONS



OPT. LOWER LEVEL EXTENSION  
(ONLY WITH SUNROOM)



OPT. SUNROOM IN THE FIRST FLOOR PLAN  
(INCLUDES LOWER LEVEL EXTENSION)



OPT. SECOND FLOOR ONLY W/SUNROOM AND  
LOWER LEVEL EXTENSION