**3 Beds****3.0 Baths****2160 Sq Ft****ADDRESS**822 PARC TOWNES DRIVE - HOMESITE 56
WENDELL, NC 27591

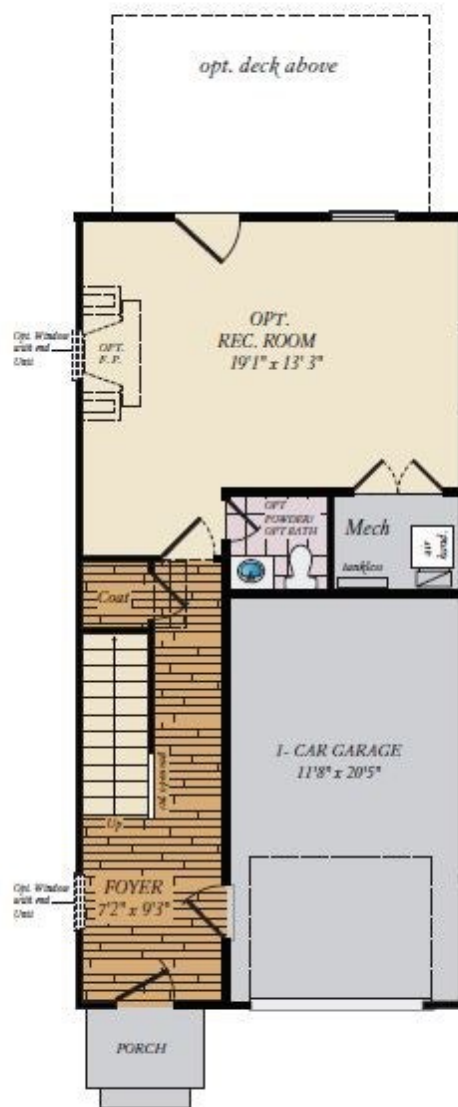
Move-In Ready! This Linville townhome comes equipped with all the standard features such as a 1-car garage and open main-level floor plan. In addition, this home comes with the following premium options included:

- Finished rec room and powder room on lower level
- Large Deck off main living area
- Oak stairs and rails
- Upgraded cabinets and hardware
- Upgraded granite countertops and kitchen backsplash
- Vaulted ceiling in primary bedroom
- Ceramic tile in primary bath

Some photos have been virtually staged to better showcase the true potential of rooms and spaces in the home. Contact our New Home Sales Consultants for a full list of included features.

Home Elevation

LOWER LEVEL



FIRST FLOOR



SECOND FLOOR

