



4 - 5 Beds

2.5 - 4.5 Baths

2,709 - 3,229 Sq Ft

COMMUNITY CONTACT

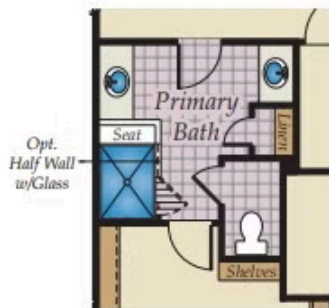
7513 LANCASTER HIGHWAY
 WAXHAW, NC 28173
 NONE
 NONE

Introducing our impressive new two-story Roanoke plan! The large front porch leads to the foyer and study. The family room has an optional vaulted ceiling and optional fireplace, and openly connects to the dining room and kitchen. The gourmet kitchen has a large island, kitchen backsplash and walk-in pantry. The laundry room is conveniently located on the first floor with the owner's suite, connecting to the walk-in closet and owner's bath which features a tub and walk-in shower. The remaining bedrooms are located on the second floor, along with an open loft and generously sized attic storage. Personalize your Roanoke with optional features such as a screened porch, a game room, an additional full bath upstairs, and more.

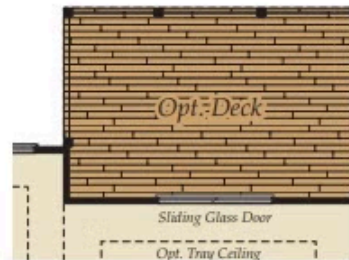
Available Elevations



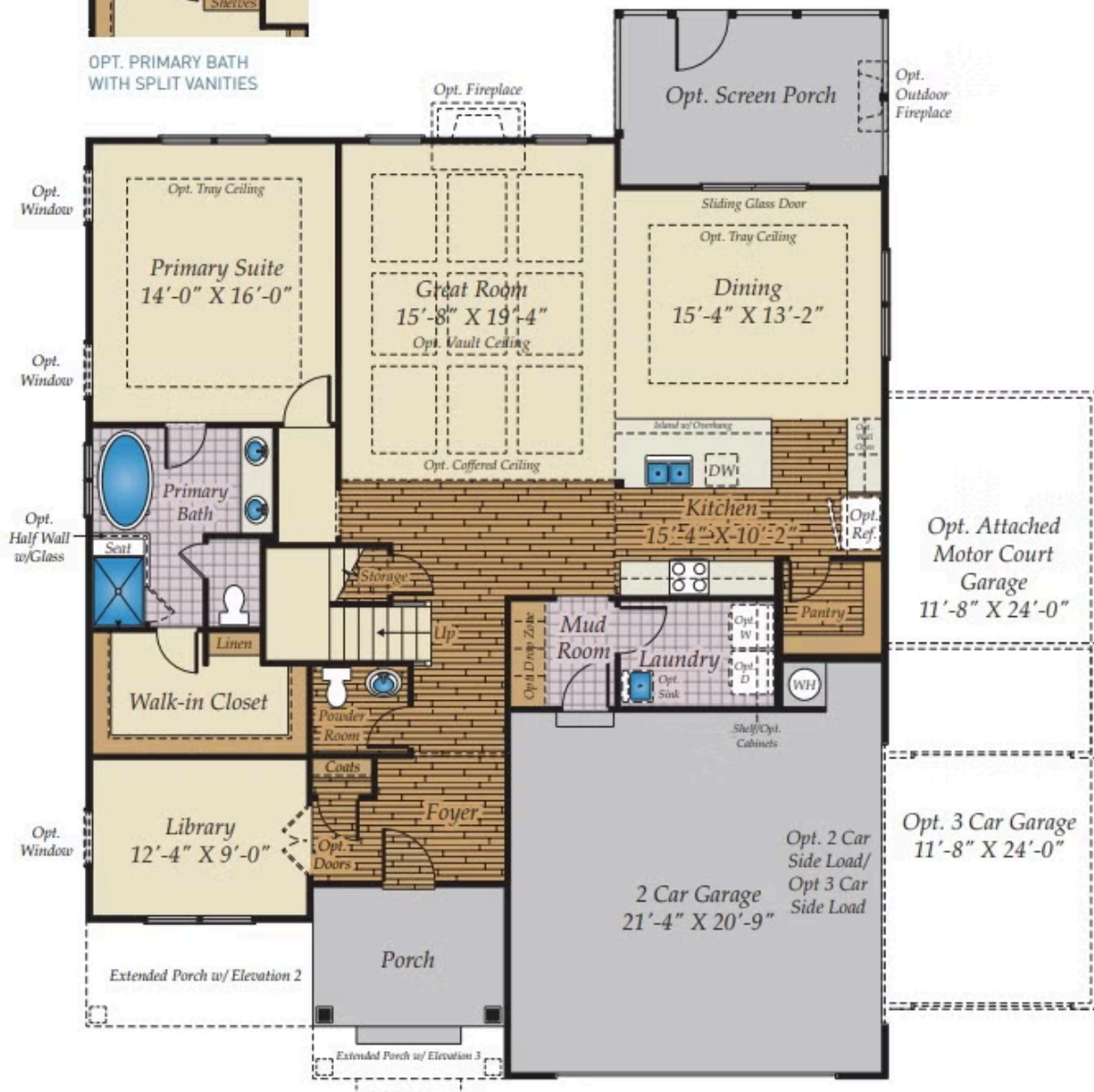
FIRST FLOOR



OPT. PRIMARY BATH
WITH SPLIT VANITIES



OPT. DECK



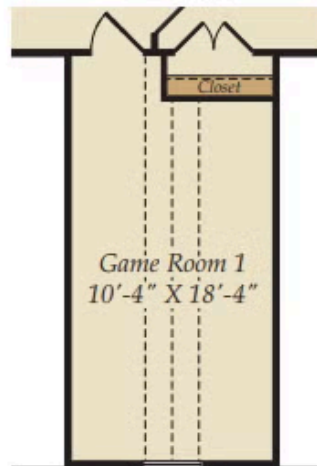
SECOND FLOOR



OPT. BATH 2 FOR THE BEDROOM 2

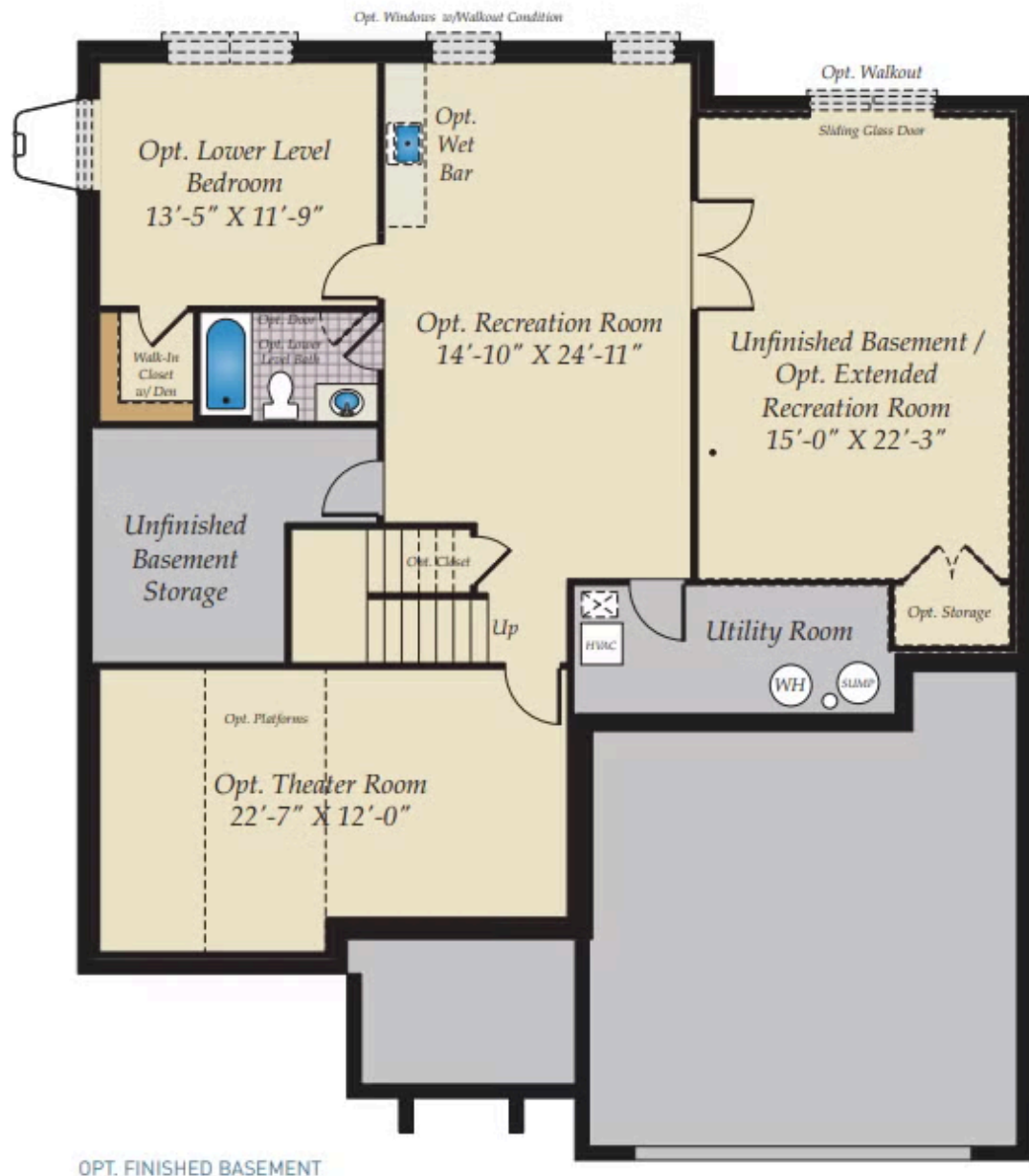


OPT. BONUS ROOM



OPT. FIN. BONUS ROOM

OPTIONAL BASEMENT



OPT. FINISHED BASEMENT