



4 - 6 Beds

2.5 - 4 Baths

3,328 - 5,600 Sq Ft

COMMUNITY CONTACT

1455 MOCKSVILLE HWY
 STATESVILLE, NC 28625

NONE

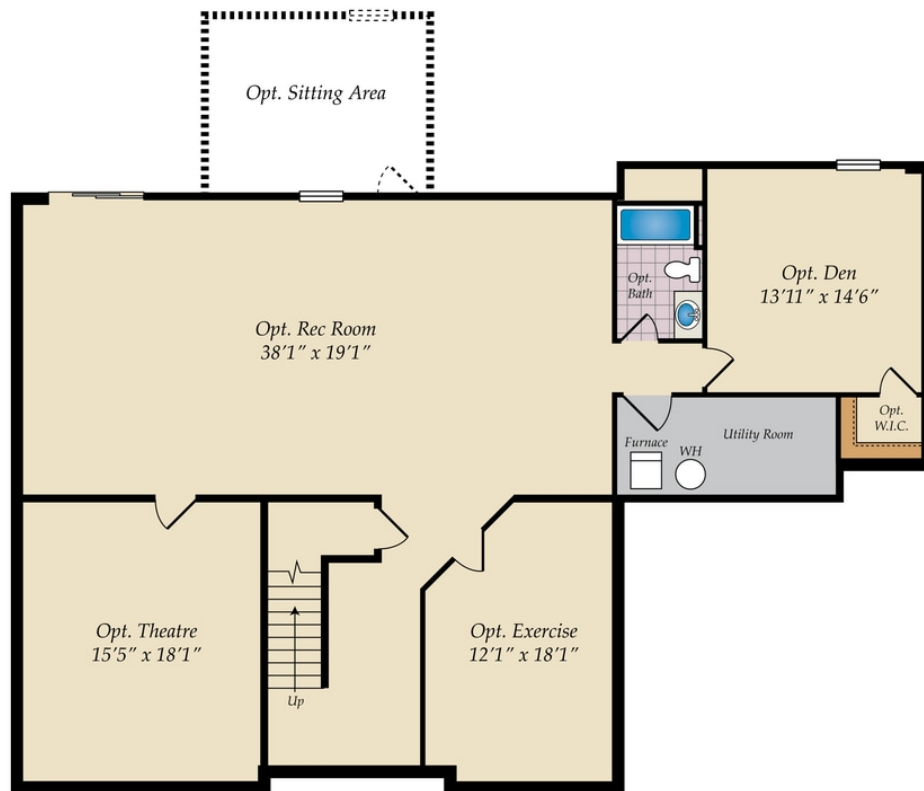
NONE

The Lexington has it all. Home has spacious dining room and home office on either side of stunning 2 story foyer with a 2 landing staircase. First floor owners suite with amazing spa bath. This home boasts our largest closet at approximately 148 square feet. Wonderful open floor plan- size great for entertaining. Kitchen open to family room and breakfast. Wonderful walk in pantry. It has 3 more bedrooms up and an expansive bonus room. Home has opportunity to add amazing outdoor living space and a large walk in attic.

Available Elevations

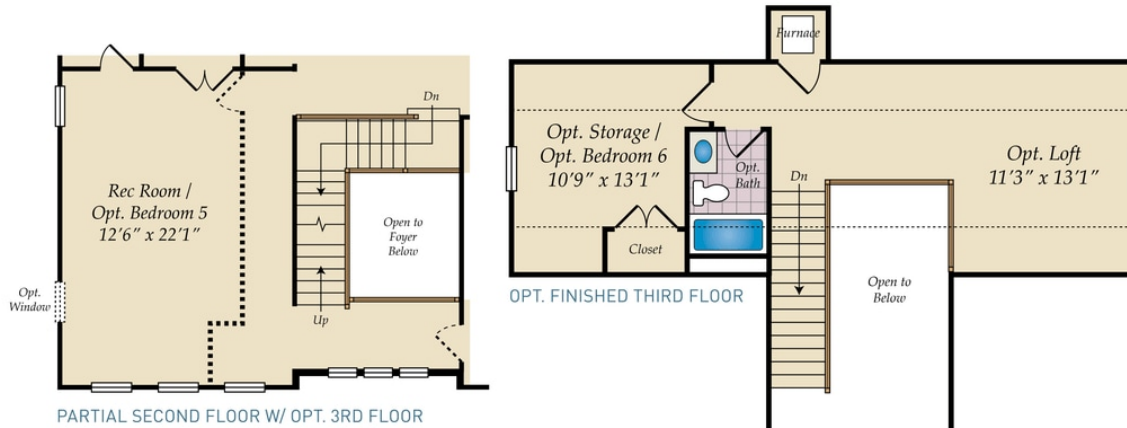
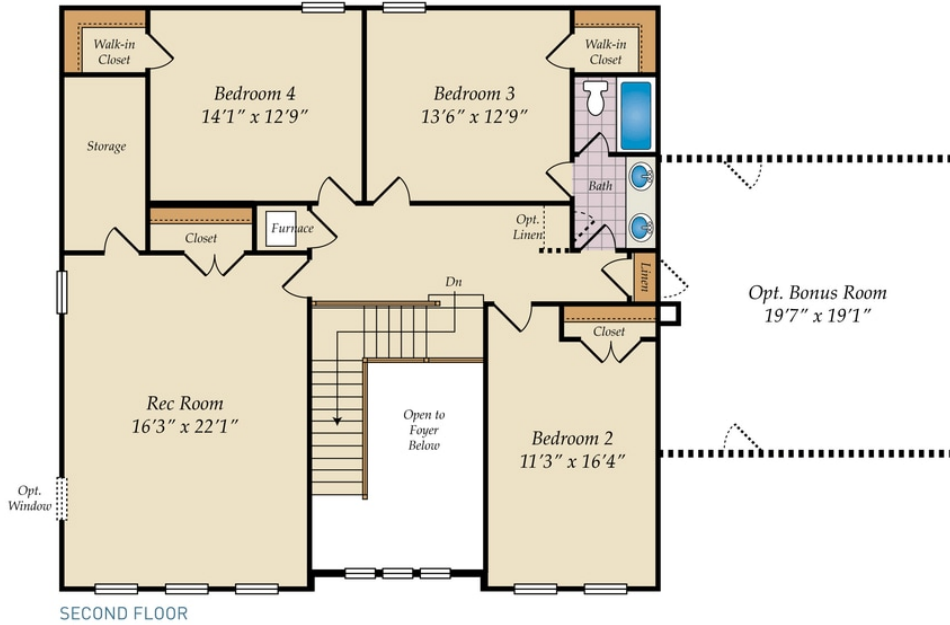


BASEMENT

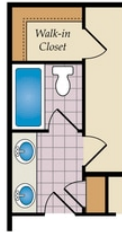


OPT. FINISHED BASEMENT

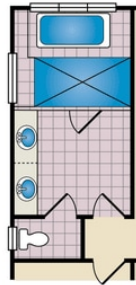
SECOND FLOOR AND OPT. THIRD FLOOR



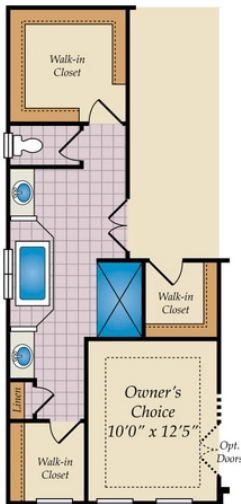
FIRST FLOOR



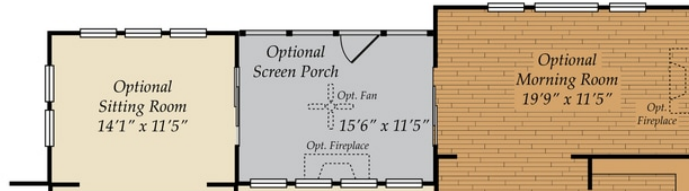
OPT. BATH 3



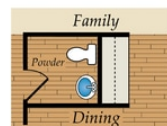
ALTERNATE
OWNER'S BATH



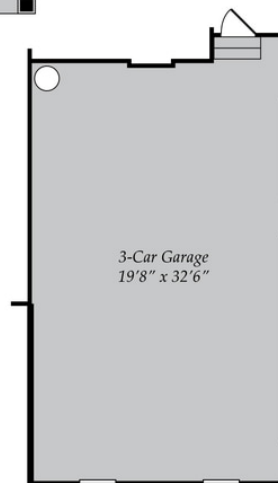
OPT. CARIBBEAN BATH



FIRST FLOOR OPTIONS



OPT. BUTLER'S PANTRY



OPT. 3 CAR GARAGE