



4 - 5 Beds

2.5 - 4 Baths

2,215 - 3,387 Sq Ft

COMMUNITY CONTACT

6 TAYRIVER
ROCKY MOUNT, NC 27804
NONE
NONE

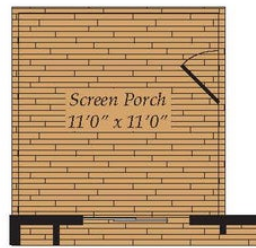
Open 4 bedroom floor plan with optional In-Law suite downstairs! The first floor features a dining room with optional tray ceiling and owner's choice room. It has a convenient open concept connecting the spacious kitchen, breakfast and great room. The kitchen includes a large island, kitchen backsplash and stainless steel appliances. The great room has an optional tray ceiling and optional fireplace. Other great options include a morning room, screen porch and in-law suite. The owner's suite, three additional bedrooms and laundry room are all on the second floor. You can add a tray ceiling and super bath in the owner's suite. Need a bit more room? Add the third floor loft with full bathroom!

Available Elevations





Opt. Morning Room



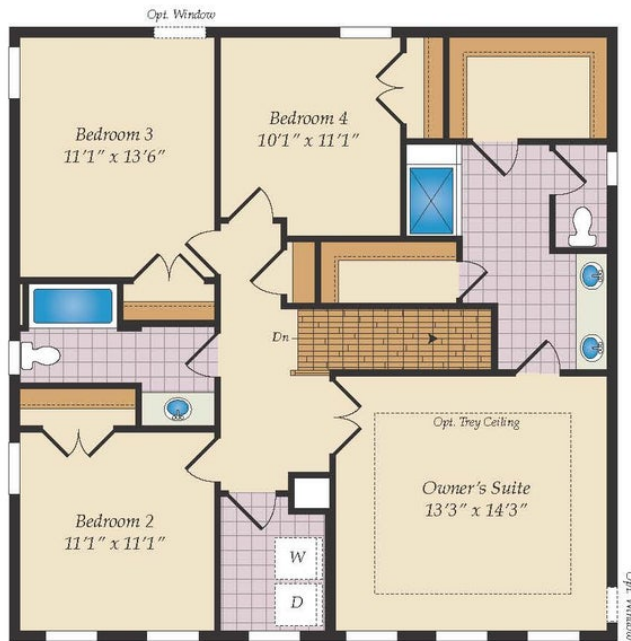
Opt. Screen Porch



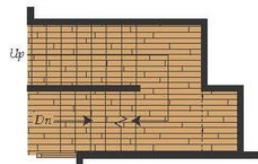
Opt. In-Law Suite



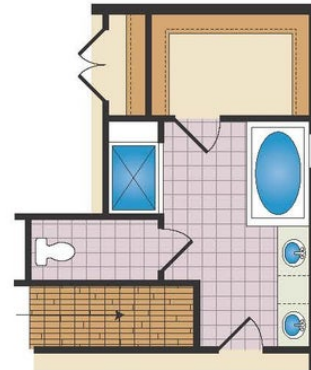
First Floor



Second Floor



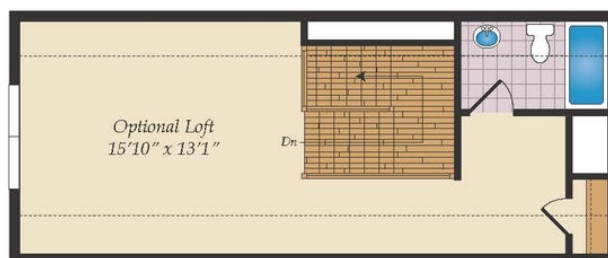
Opt. Stairs w/ Opt. Loft



Opt. Super Bath



Opt. Super Bath w/ Loft



Opt. Third Floor Loft