



3 - 4 Beds

2.5 - 5 Baths

3,238 - 6,263 Sq Ft

COMMUNITY CONTACT

7193 BLUE RUN LANE
RALEIGH, NC 27604
(919) 213-7778
INFO@CARUSOHOMES.COM

Our brand-new Jordan plan! This floorplan offers plenty of room and options to suit your needs. Enter through the front porch and into the foyer and home office. Walk further in where you are greeted by a dining room, the sizeable great room, open to the kitchen. There is an option to add an in-law suite to keep family close. Opt for a morning room or screened porch facing the backyard.

Upstairs comes standard 4 bedrooms and loft. The owner's suite features a luxurious bath, shower, and double vanity. A walk-in closet provides plenty of extra storage space. Opt for a third floor or basement (if the lot allows). Plenty of options are available to make this floorplan your own!

Interior photos from similar floor plans used for representation only.

Available Elevations



Elevation 30: Shown with Opt. Metal Roof above the garage & front porch



Elevation 31: Shown with Opt. Metal Roof above the garage



Elevation 50: Shown with Opt. Metal Roof above the garage & front porch, and Opt. Wrap around porch

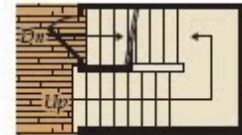
FIRST FLOOR



OPT. COVERED PORCH



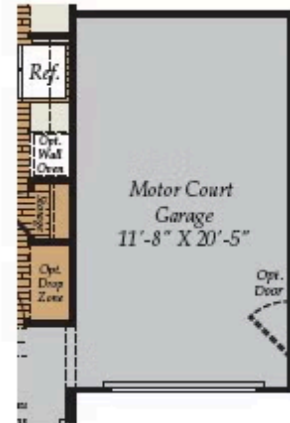
OPT. MORNING ROOM



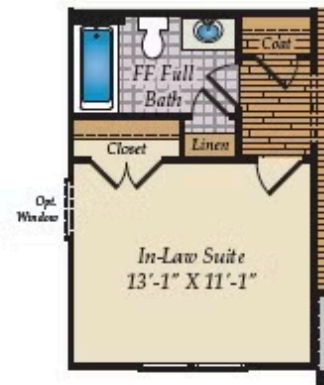
STEPS w/OPT BASEMENT



OPT. SIDE LOAD GARAGE

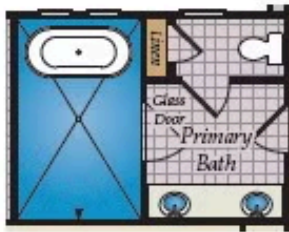


OPT. MOTOR COURT GARAGE

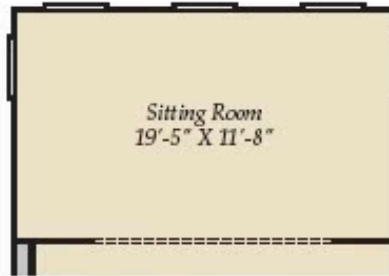


OPT. IN-LAW SUITE

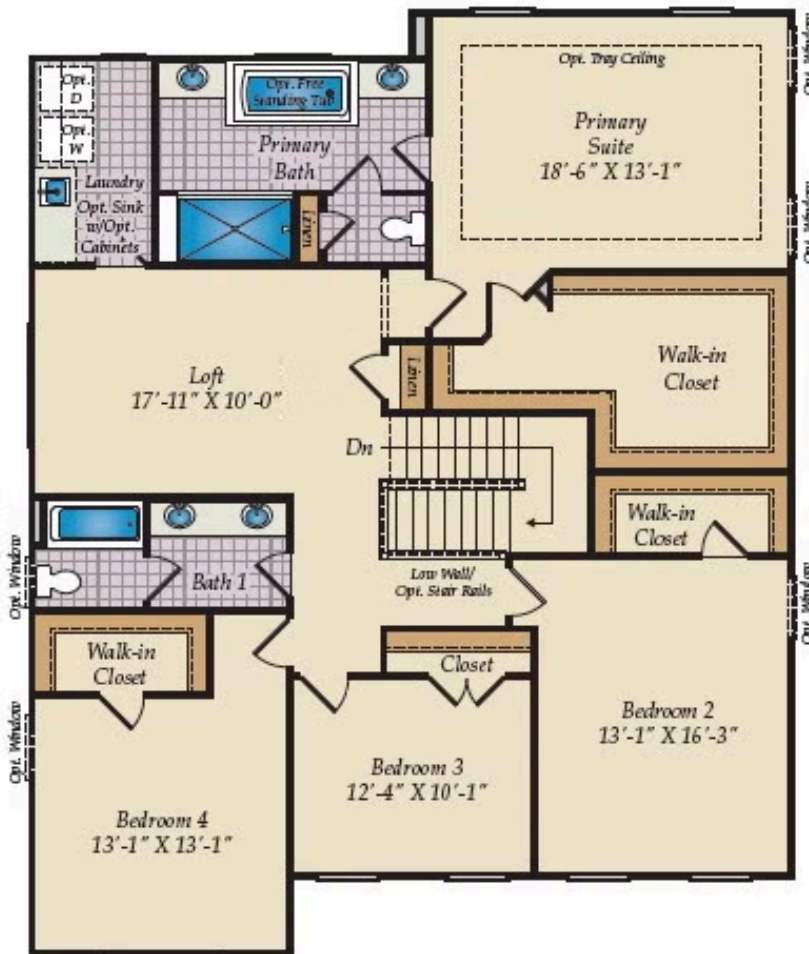
SECOND FLOOR



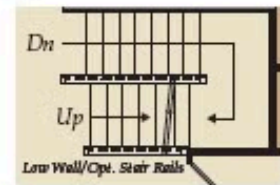
OPT. DELUXE PRIMARY BATH



OPT. SITTING ROOM W/
MORNING ROOM BELOW

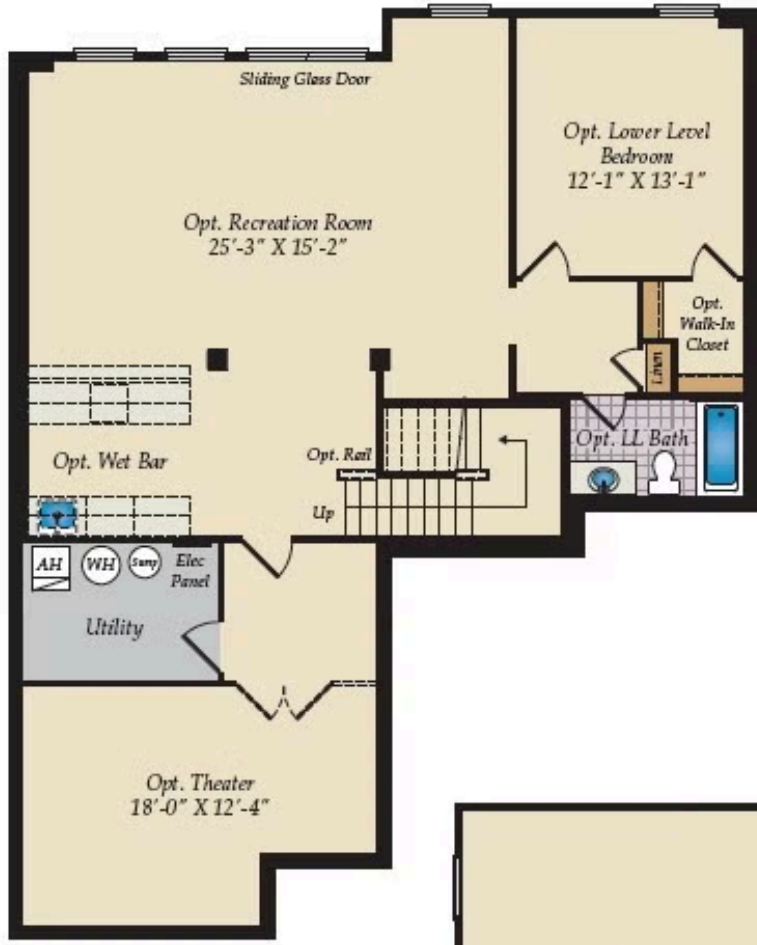


OPT. BATH 2

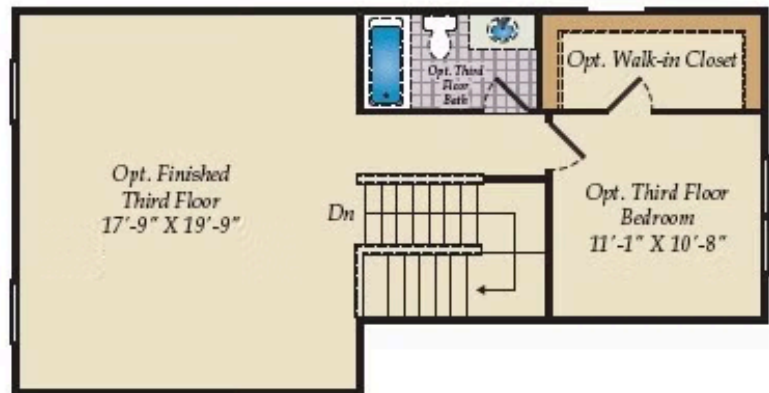


STAIRS W/ OPT. 3RD FLOOR

OPT. THIRD FLOOR & OPT. BASEMENT



OPT. FINISHED BASEMENT



OPT. THIRD FLOOR