



Single Family

**4 - 6 Beds**

**2.5 - 4 Baths**

**3,328 - 5,600 Sq Ft**

**COMMUNITY CONTACT**

1376 PERTH ROAD  
 MOORESVILLE, NC 28117  
 NONE  
 NONE

The Lexington has it all. Home has spacious dining room and home office on either side of stunning 2 story foyer with a 2 landing staircase. First floor owners suite with amazing spa bath. This home boasts our largest closet at approximately 148 square feet. Wonderful open floor plan- size great for entertaining. Kitchen open to family room and breakfast. Wonderful walk in pantry. It has 3 more bedrooms up and an expansive bonus room. Home has opportunity to add amazing outdoor living space and a large walk in attic.

## Available Elevations



Elevation 1

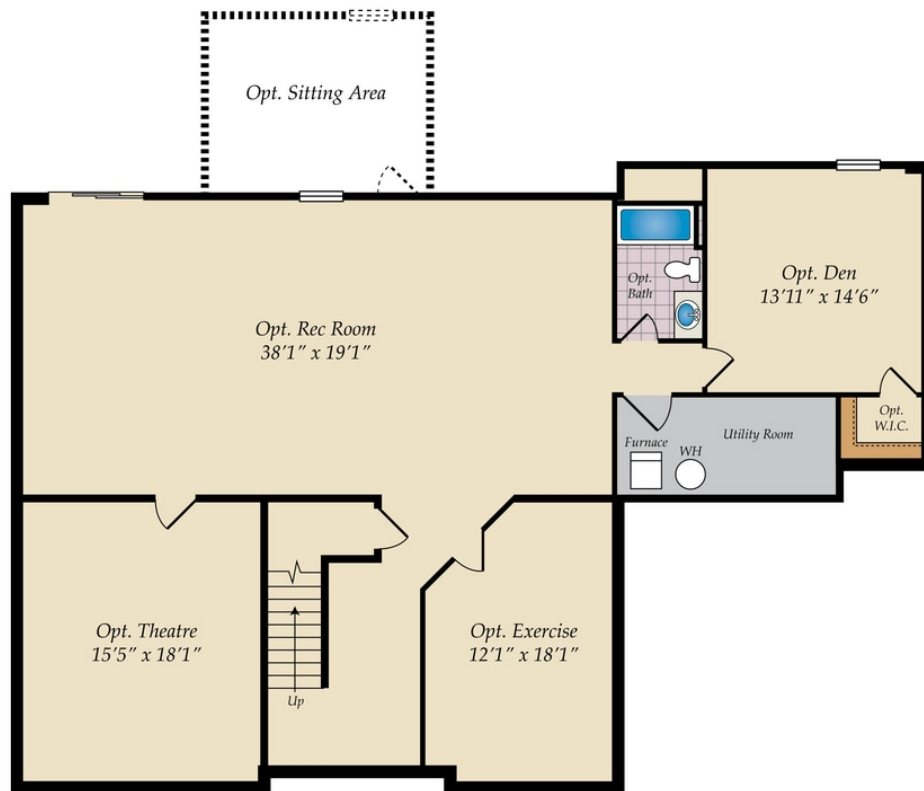


Elevation 2



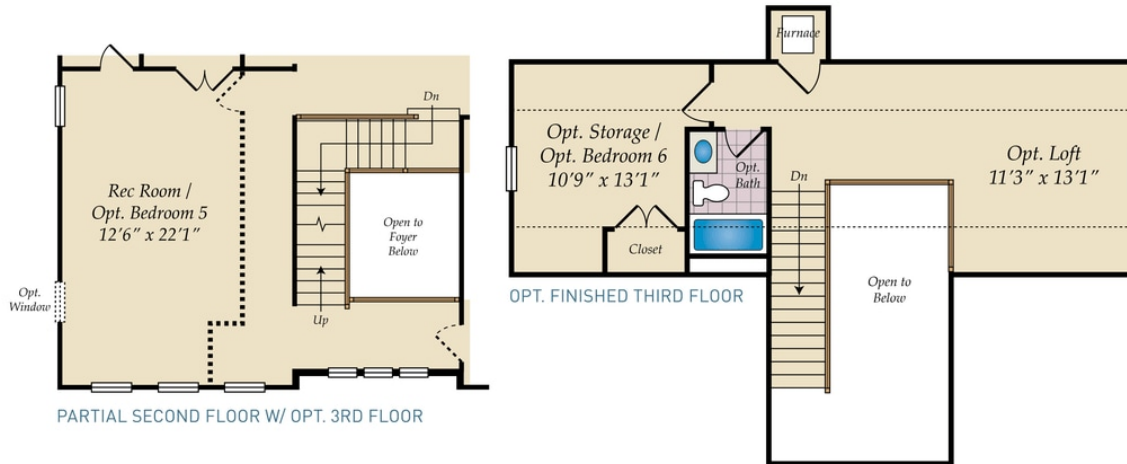
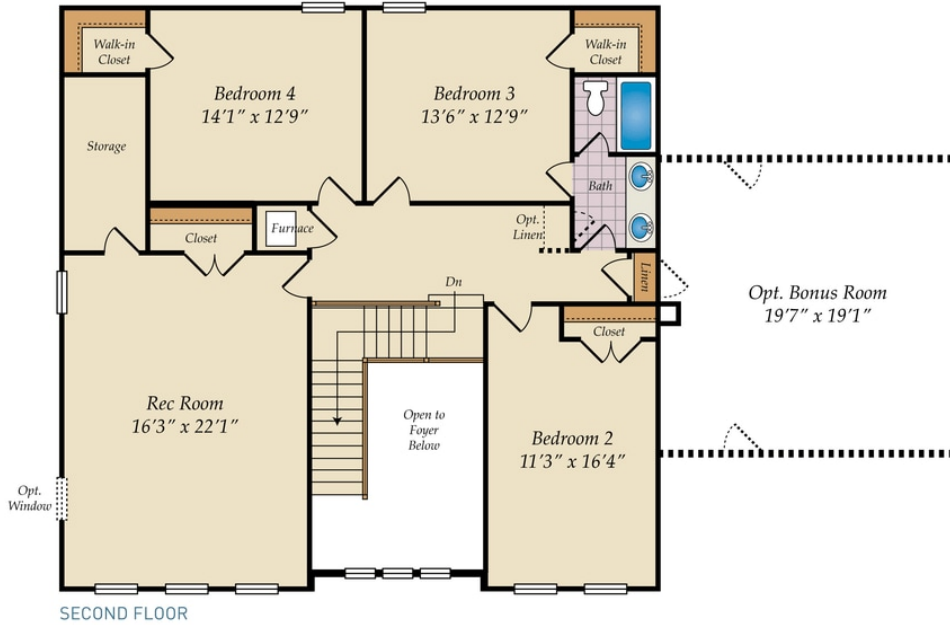
Elevation 3

## BASEMENT

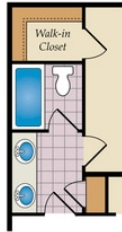


OPT. FINISHED BASEMENT

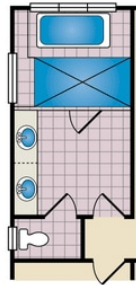
## SECOND FLOOR AND OPT. THIRD FLOOR



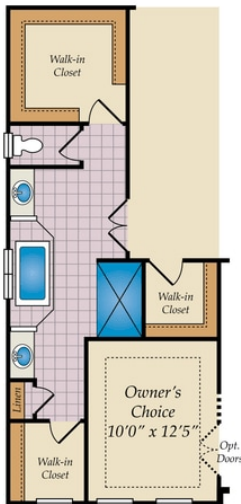
## FIRST FLOOR



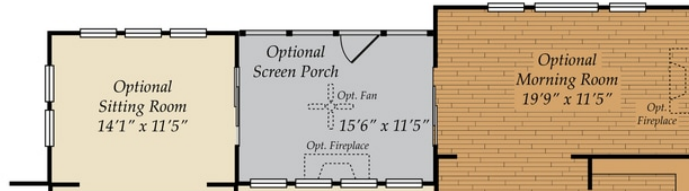
OPT. BATH 3



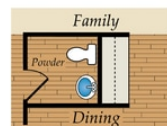
ALTERNATE  
OWNER'S BATH



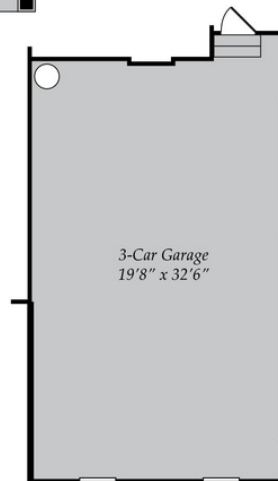
OPT. CARIBBEAN BATH



FIRST FLOOR OPTIONS



OPT. BUTLER'S PANTRY



OPT. 3 CAR GARAGE