



4 Beds

3.5 Baths

2,593 Sq Ft

COMMUNITY CONTACT

10 W TIGER LILY TRAIL
CLAYTON, NC 27527
(919) 213-7778
INFO@CARUSOHOMES.COM

NEW PLAN - Exclusively at South Lake Townes at Flowers Plantation

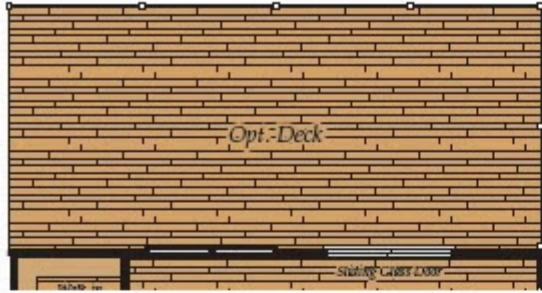
- Room to grow with 3–4 bedrooms and 2.5–3.5 baths across 2,593 sq. ft.
- **Flexible lower level** that can become a private guest suite, multigenerational living space, or a recreation room for movie nights and gatherings
- Bright, **open main level** where the kitchen, dining, and great room flow seamlessly. Perfect for entertaining or everyday living
- Work from home with ease in the **dedicated study**, or reimagine it as a hobby or play space
- **Outdoor living your way** with options for a deck, covered porch, screened porch, or cantilevered deck. Ideal for relaxing evenings or weekend cookouts
- **Chef-inspired kitchen** with the option for an expanded island, bringing everyone together for meals, homework, or casual conversation
- Retreat to your primary suite, complete with **walk-in closet** and **spa-inspired bath** options ...

Available Elevations



Brick/stone fronts, chimneys, bay windows, keystones, exterior trim, garage doors, light fixtures, dormers, and gables shown on elevations are optional features. Actual product specifications may vary in dimension or detail from these drawings. This insert is for illustrative purposes only and is not part of the legal contract. All dimensions are approximate. Many available options are not shown.

FIRST FLOOR



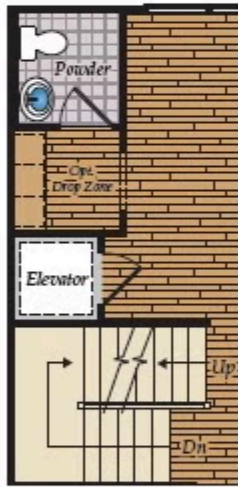
OPT. DECK



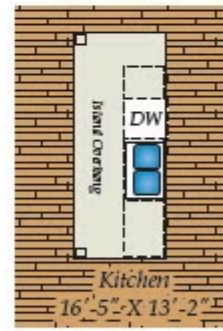
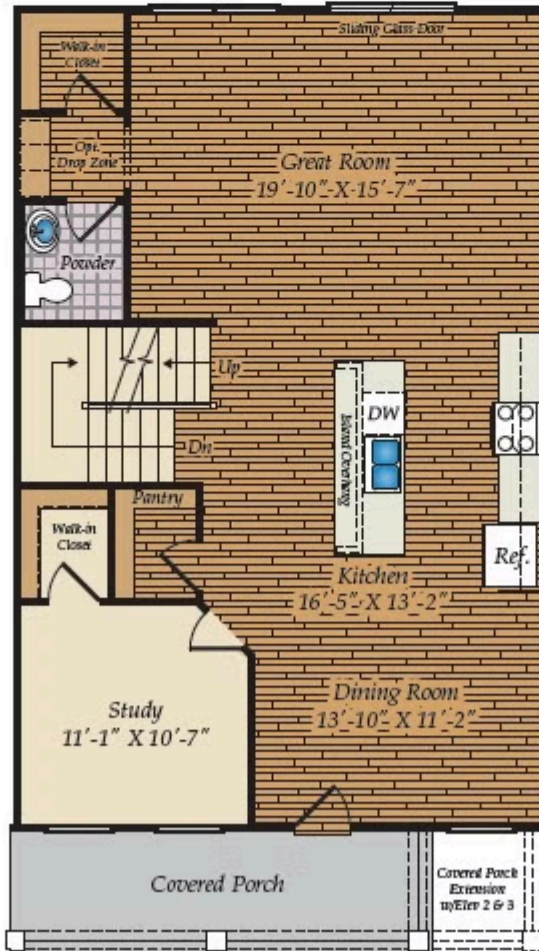
OPT. COVERED PORCH w/ OPT. SCREENED PORCH



OPT. CANTILEVERED DECK



OPT. ALTERNATE FLOORPLAN w/ ELEVATOR

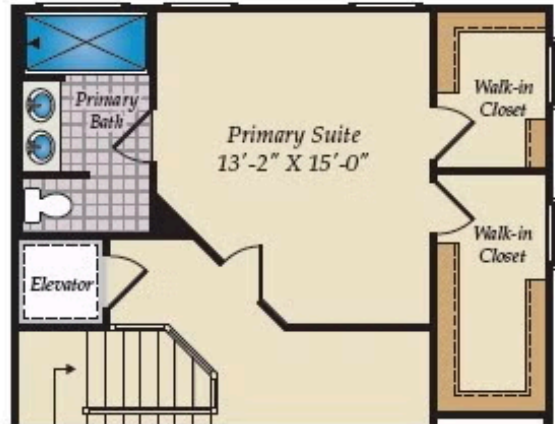


OPT. LARGER ISLAND

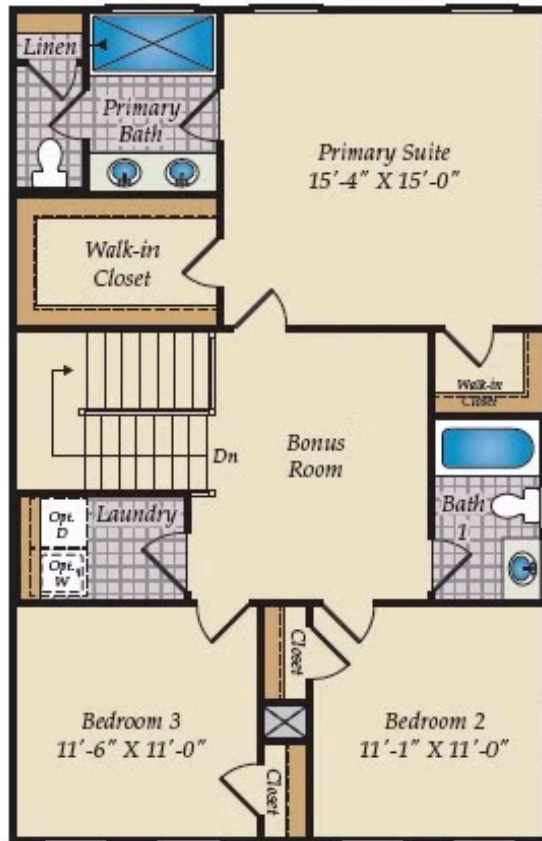
SECOND FLOOR



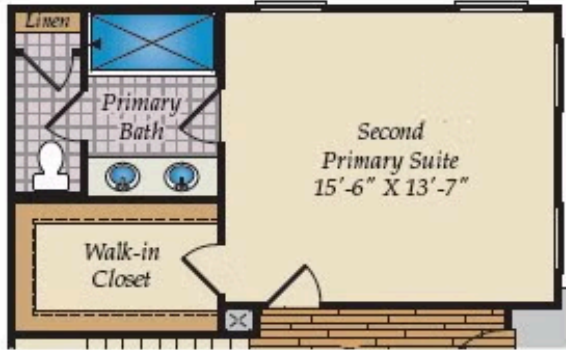
OPT. DELUXE PRIMARY BATH



OPT. ALTERNATE FLOORPLAN w/ELEVATOR



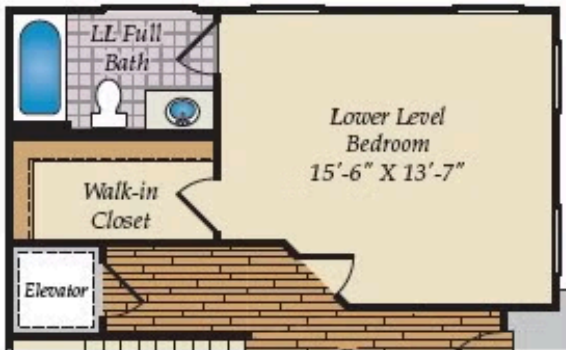
LOWER LEVEL



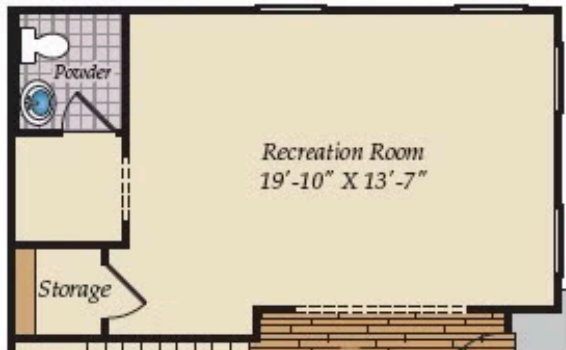
OPT. SECOND PRIMARY SUITE



OPT. DELUXE BATH w/ SECOND PRIMARY SUITE



OPT. LOWER LEVEL BEDROOM WITH FULL BATH & ELEVATOR



OPT. RECREATION WITH POWDER

