



Single Family

**4 - 6 Beds**

**2.5 - 5.5 Baths**

**3,410 - 9,164 Sq Ft**

**COMMUNITY CONTACT**

7628 KNOTTING HILL LANE  
PORT TOBACCO, MD 20677

The Kingsport plan is our most popular and versatile estate home starting at 3,502 square feet, with options to expand up to 6,102 square feet of luxurious living space. The home can be built with a two or three car garage and is available in many elevations, including brick and stone combination fronts and craftsman styles. Inside, plenty of grand features await including a two-story foyer, two-story family room, optional in-law suite and multiple options to upgrade to a gourmet or chef's kitchen. A luxury owner's retreat can be designed with a sitting area, fireplace, multiple walk-in closets and our most exciting Caribbean or California spa bath. Design your basement for entertaining with options like a theater room, wet bar and a den or 5th bedroom. There are hundreds of ways to personalize this luxurious home and make it your own.

## Available Elevations



Elevation 3



Elevation 6

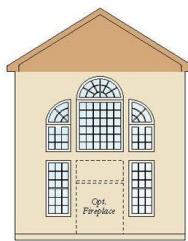


Elevation 11

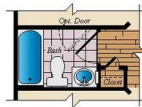
## First Floor



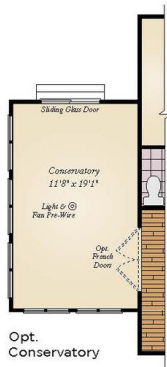
Opt. 5' Family Room  
Extension



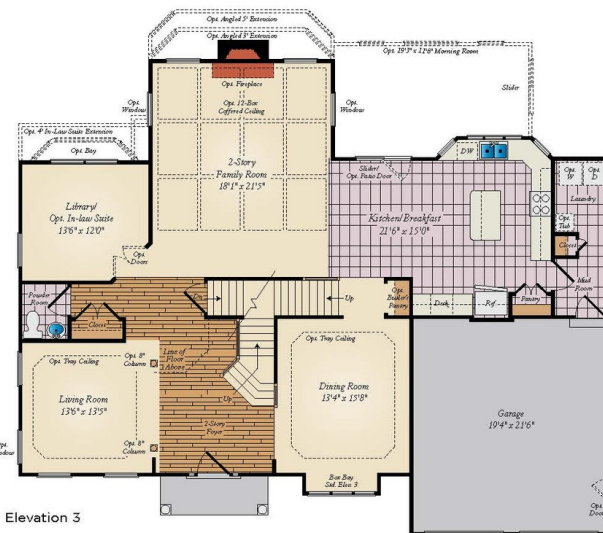
Opt. Deluxe Family Room  
Window Package



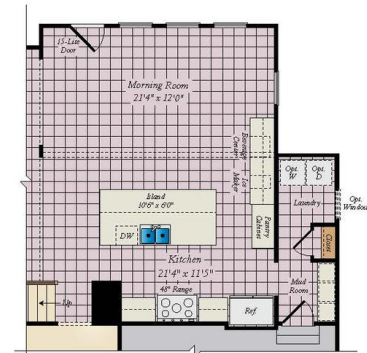
Opt. Full Bath



Opt.  
Conservatory

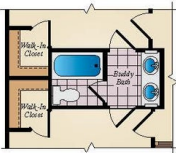


Opt. Morning Room

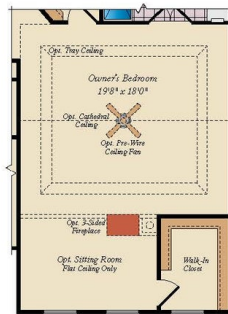


Opt. Chef's Kitchen

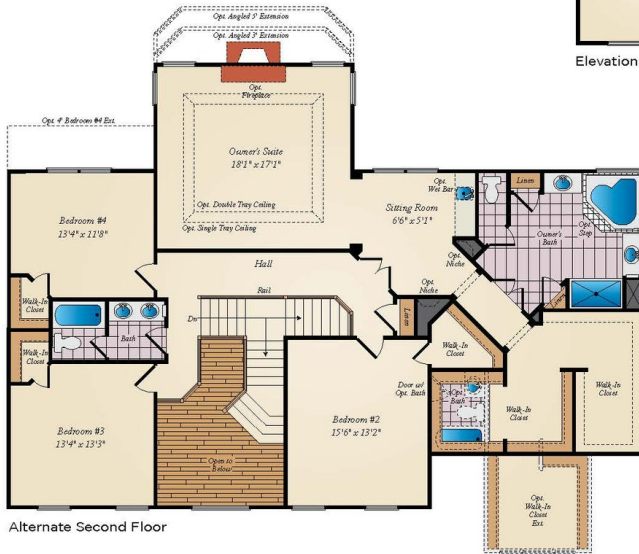
## Second Floor



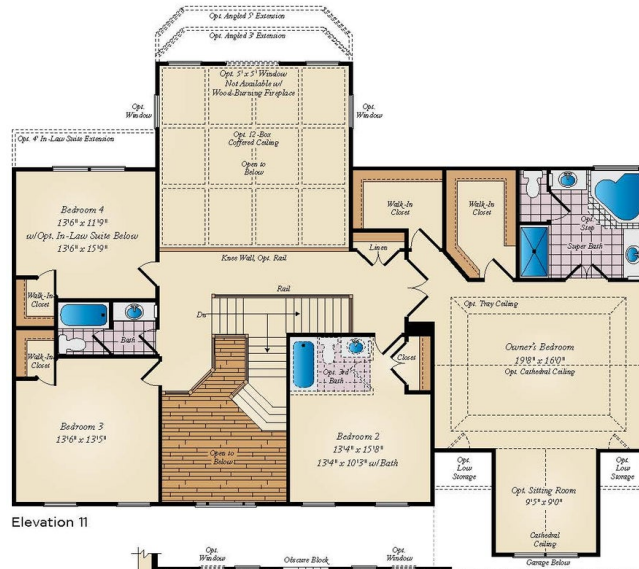
Opt. Buddy Bath  
Requires Selection of  
Opt. 3rd Bath



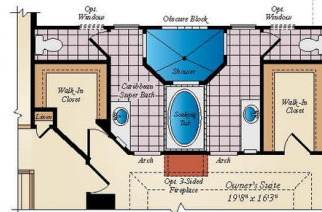
Opt. Owner's Bedroom  
with 2-Car Garage



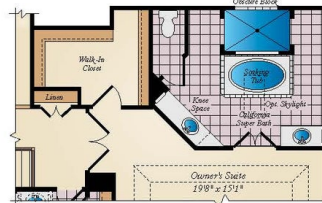
Alternate Second Floor



Elevation 11

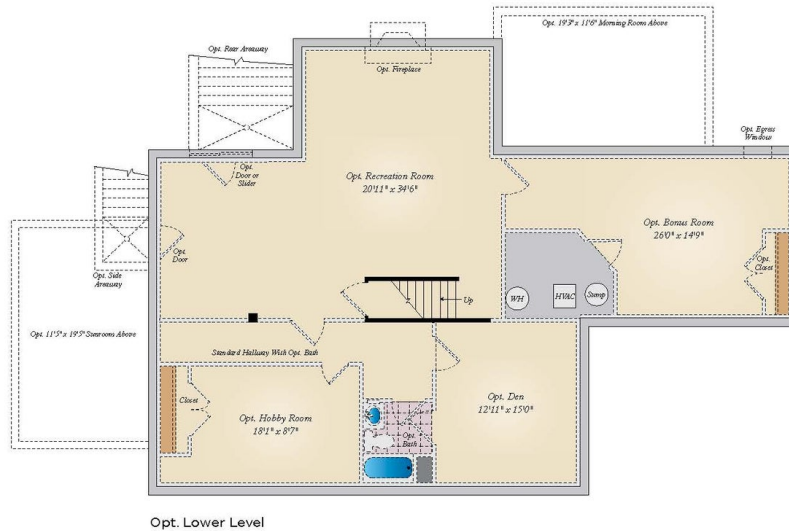


Opt. Caribbean Super Bath with Std. Second Floor



Opt. California Super Bath with Std. Second Floor

## Basement



Opt. Lower Level