



3 - 5 Beds

2.5 - 3.5 Baths

3,359 - 6,006 Sq Ft

COMMUNITY CONTACT

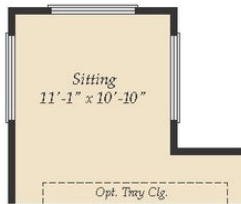
4720 GARLAND COURT
 POMFRET, MD 20675
 NONE
 NONE

The Baywood plan is a single family ranch style home and features the highly sought after first floor master suite starting at 2,372 sq. ft. with the capability of up to 6,006 sq. ft. and up to 5 bedrooms. Enjoy one-level living, or add a second floor for additional space. Choose from hundreds of luxury options and finishes to design your dream...screened porch, gourmet kitchen, stone or modern fireplaces, 2nd floor loft, spa baths, and basements made for entertaining with theater room, wet bar and much more!

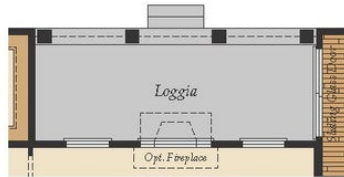
Available Elevations



FIRST FLOOR



OPT. SITTING ROOM AT
OWNER'S SUITE



OPT. LOGGIA
(Available only with
Opt. Extended Breakfast)



OPT. MORNING ROOM
(Available only with
Opt. Extended Breakfast)

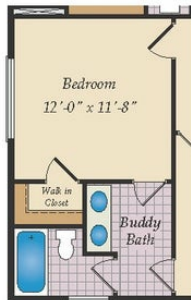


OPT. 3 CAR SIDE GARAGE

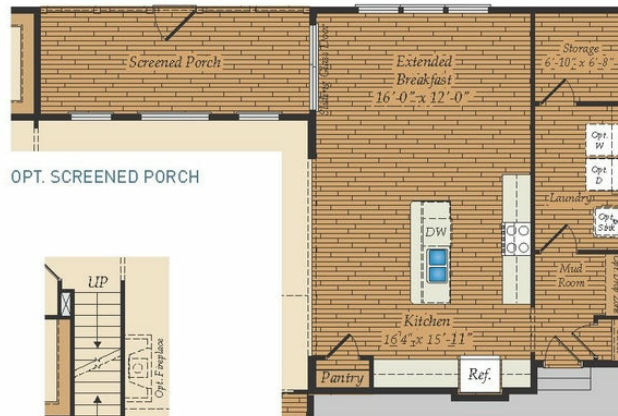
MORE OPTIONS



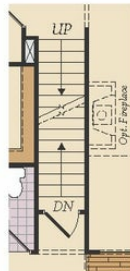
OPT. CALIFORNIA OWNER'S BATH



OPT. BUDDY BATH

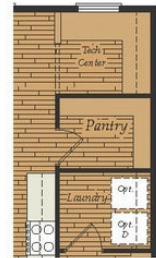


OPT. SCREENED PORCH



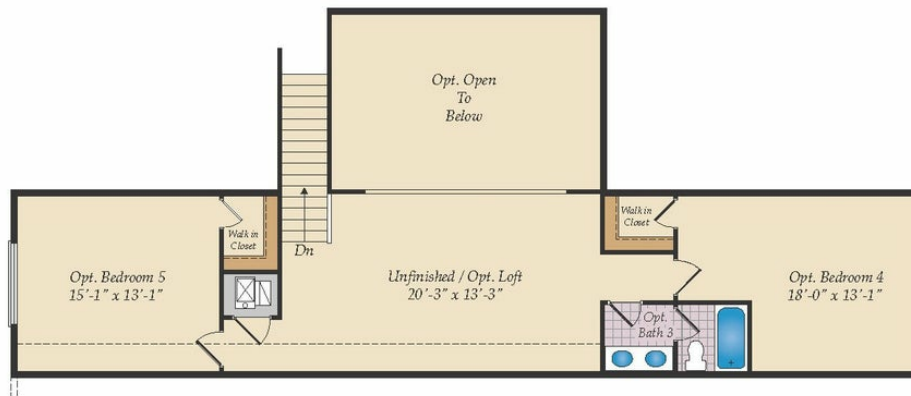
OPT. STAIRS
TO OPTIONAL
OPT. 2ND FLOOR

OPT. EXTENDED BREAKFAST



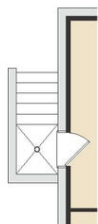
OPT. TECH. CENTER

OPTIONAL SECOND FLOOR

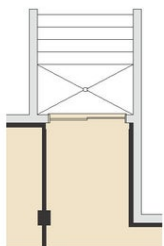


OPT. FINISHED 2ND FLOOR

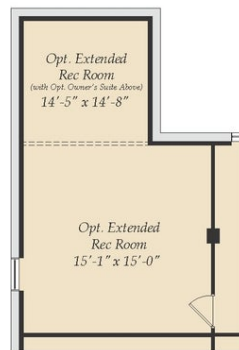
BASEMENT



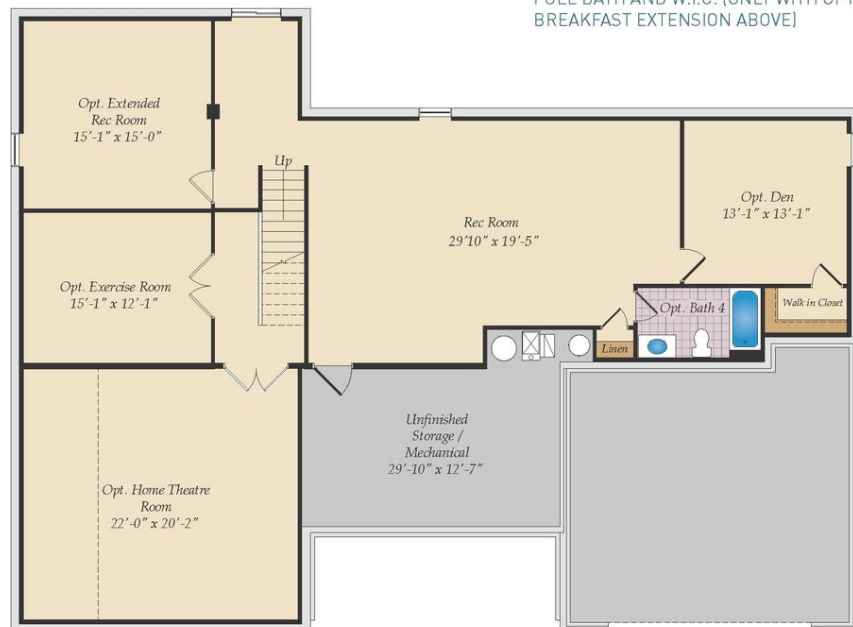
OPT. SINGLE DOOR
AREAWAY



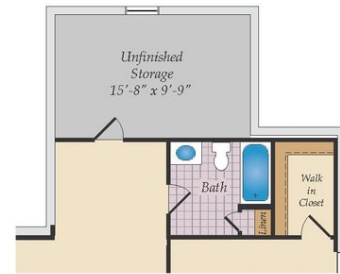
OPT. DOUBLE DOOR
AREAWAY



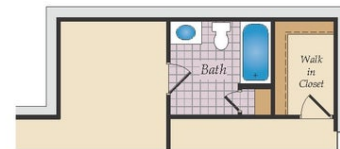
EXTENDED REC. ROOM (ONLY WITH
OWNER'S SITTING ROOM ABOVE)



OPT. FINISHED BASEMENT



UNFINISHED STORAGE (ONLY WITH
MORNING ROOM ABOVE)



FULL BATH AND W.I.C. (ONLY WITH OPT.
BREAKFAST EXTENSION ABOVE)