



3 - 5 Beds

2.5 - 4.5 Baths

2,354 - 2,773 Sq Ft

COMMUNITY CONTACT

6813 ARCHLINE DRIVE (GPS: 6800
FASHION PLACE)
LAUREL, MD 20707
(301) 517-7314
INFO@CARUSOHOMES.COM

Nestled along the interior of The Marais at Konterra, the Park Townes offer a serene and picturesque setting facing a central green space and dog park. With a classic architectural style and warm, inviting details, these homes provide a timeless living experience in the heart of a vibrant community.

The Park 2200 end unit features generous living space, expansive windows that fill the home with natural light, and versatile layouts designed to adapt to your lifestyle.

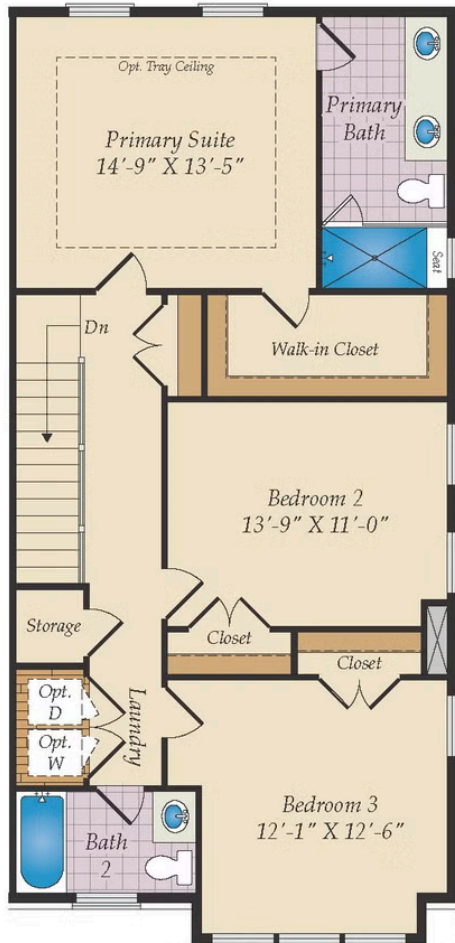
- End Unit
- 2-car Garage
- Rear Kitchen or Central Kitchen with Optional Office/Playroom
- Rec Room or Bedroom 4 on Main Level
- Optional Deck or Balcony
- Primary Bedroom Suite with Optional Spa Bath
- Optional Rooftop Terrace (with or without Loft)

Available Elevations

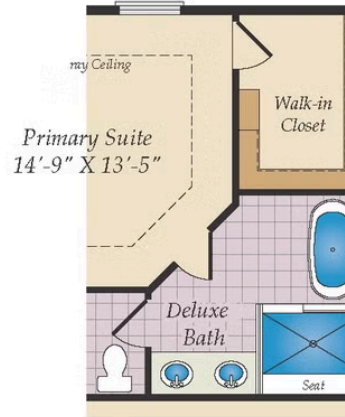


Brick/stone fronts, chimneys, bay windows, keystones, exterior trim, garage doors, light fixtures, dormers, and gables shown on elevations are optional features. Actual product specifications may vary in dimension or detail from these drawings. This insert is for illustrative purposes only and is not part of the legal contract. All dimensions are approximate. Many available options are not shown.

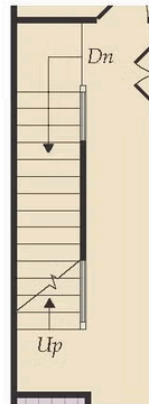
SECOND FLOOR AND OPT. LOFT



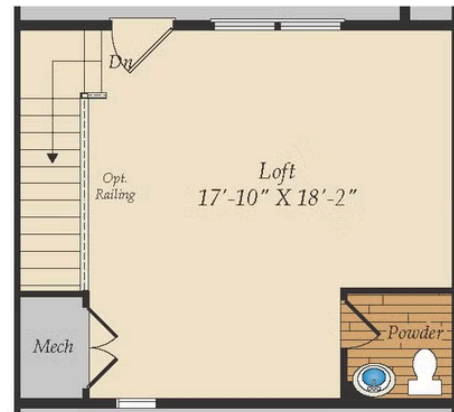
SECOND FLOOR



OPT. DELUXE 5 PIECE BATH



OPT. STAIRS TO OPT. TERRACE



OPT. LOFT & TERRACE

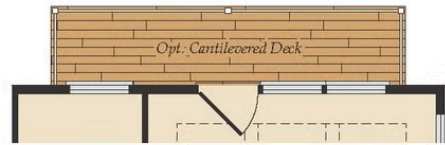


OPT. LOFT BEDROOM W/BATH

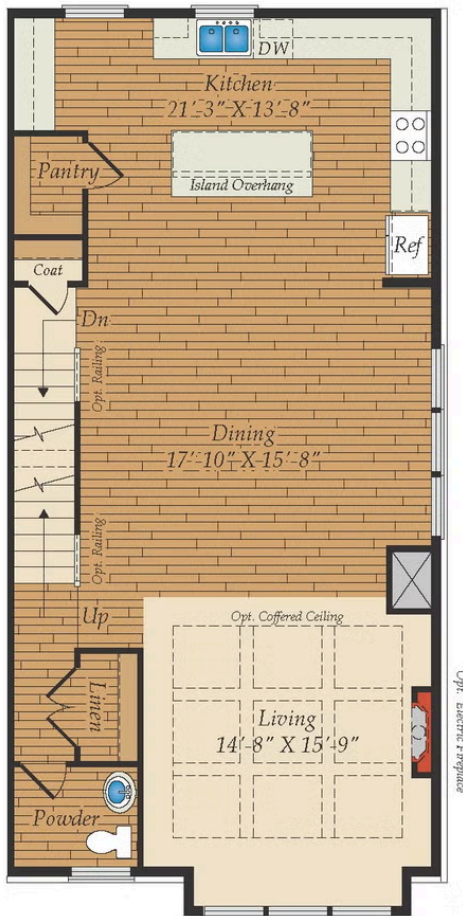
FIRST FLOOR



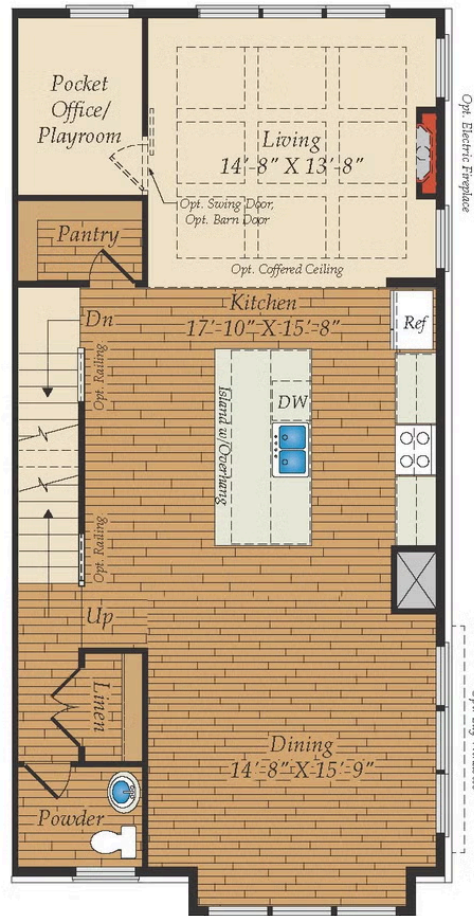
OPT. CANTILEVERED DECK



OPT. CANTILEVERED DECK W/ MIDDLE KITCHEN LAYOUT



STANDARD FIRST FLOOR



OPT. MIDDLE KITCHEN LAYOUT

Brick/stone fronts, chimneys, bay windows, keystones, exterior trim, garage doors, light fixtures, dormers, and gables shown on elevations are optional features. Actual product specifications may vary in dimension or detail from these drawings. This insert is for illustrative purposes only and is not part of the legal contract. All dimensions are approximate. Many available options are not shown.

LOWER LEVEL

