



Townhome

2 - 5 Beds

2.5 - 5 Baths

1,640 - 2,206 Sq Ft

COMMUNITY CONTACT

6813 ARCHLINE DRIVE (GPS: 6800 FASHION PLACE)
 LAUREL, MD 20707
 (301) 517-7314
 INFO@CARUSOHOMES.COM

Nestled along the interior of The Marais at Konterra, the Park Townes offer a serene and picturesque setting facing a central green space and dog park. With a classic architectural style and warm, inviting details, these homes provide a timeless living experience in the heart of a vibrant community.

The Park 1800 is a classic and welcoming interior unit with generous living space, an open layout, and timeless curb appeal.

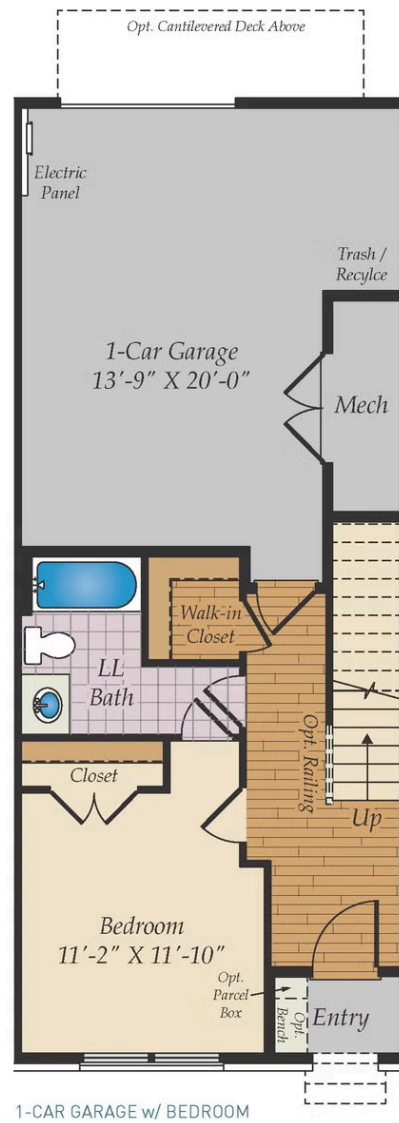
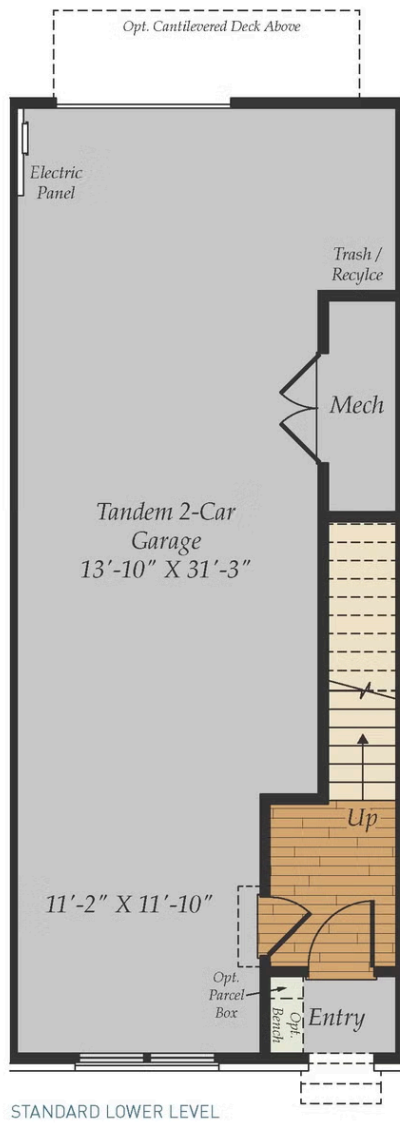
- Interior Unit
- 1-car Garage with Flex Space or 2-car Tandem Garage
- Central or Rear Kitchen
- Flex Space on Main Level
- Optional Cantilever Deck
- Primary Bedroom Suite
- Optional Rooftop Terrace (with or without Loft)

Available Elevations



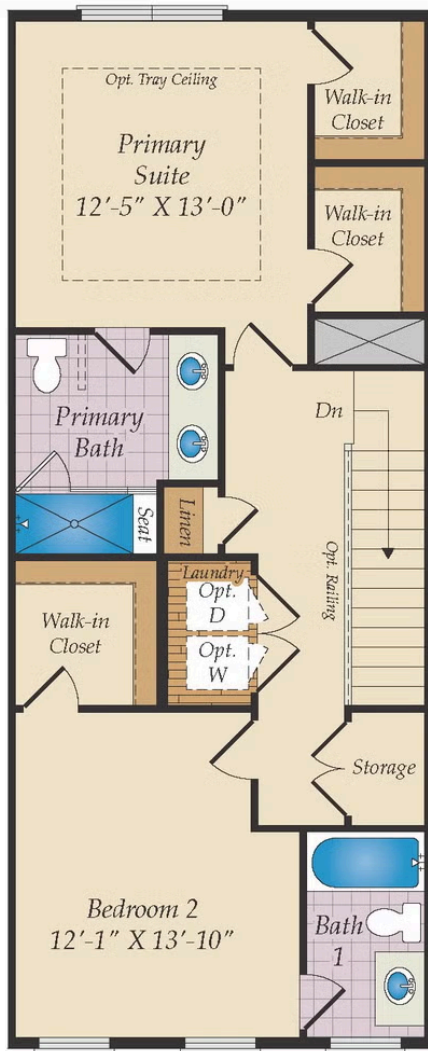
Brick/stone fronts, chimneys, bay windows, keystones, exterior trim, garage doors, light fixtures, dormers, and gables shown on elevations are optional features. Actual product specifications may vary in dimension or detail from these drawings. This insert is for illustrative purposes only and is not part of the legal contract. All dimensions are approximate. Many available options are not shown.

LOWER LEVEL

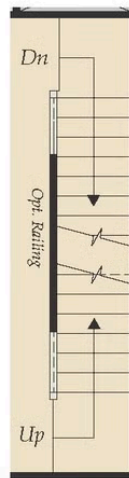


Brick/stone fronts, chimneys, bay windows, keystones, exterior trim, garage doors, light fixtures, dormers, and gables shown on elevations are optional features. Actual product specifications may vary in dimension or detail from these drawings. This insert is for illustrative purposes only and is not part of the legal contract. All dimensions are approximate. Many available options are not shown.

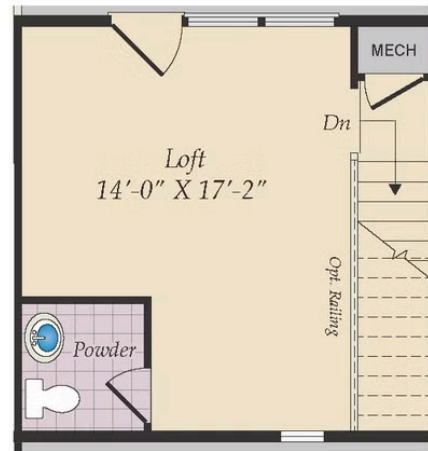
SECOND FLOOR AND OPT. THIRD FLOOR



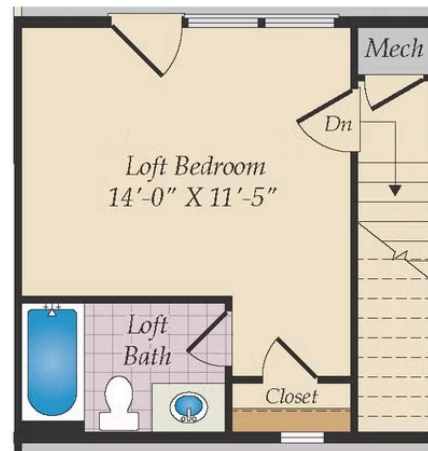
SECOND FLOOR



OPT. STAIRS TO
OPT. TERRACE



LOFT & TERRACE



LOFT BEDROOM w/ BATH