



**3 - 4 Beds**

**3.5 Baths**

**2,430 - 2,451 Sq Ft**

**COMMUNITY CONTACT**

6813 ARCHLINE DRIVE (GPS: 6800  
FASHION PLACE)  
LAUREL, MD 20707  
(301) 517-7314  
INFO@CARUSOHOMES.COM

Located along the scenic east side of The Marais at Konterra, the Edge Townes offer a sophisticated blend of architectural charm, modern functionality, and open-air living. Just steps from lush green space and a winding walking trail, these homes offer a peaceful retreat with unmatched connection to the outdoors. The Edge 2200 is a spacious end unit offering main-level living space with plenty of natural light, a private back yard, and flexible layout options.

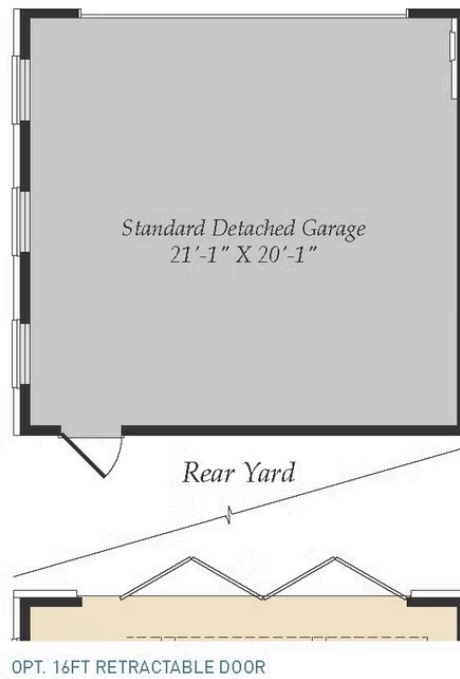
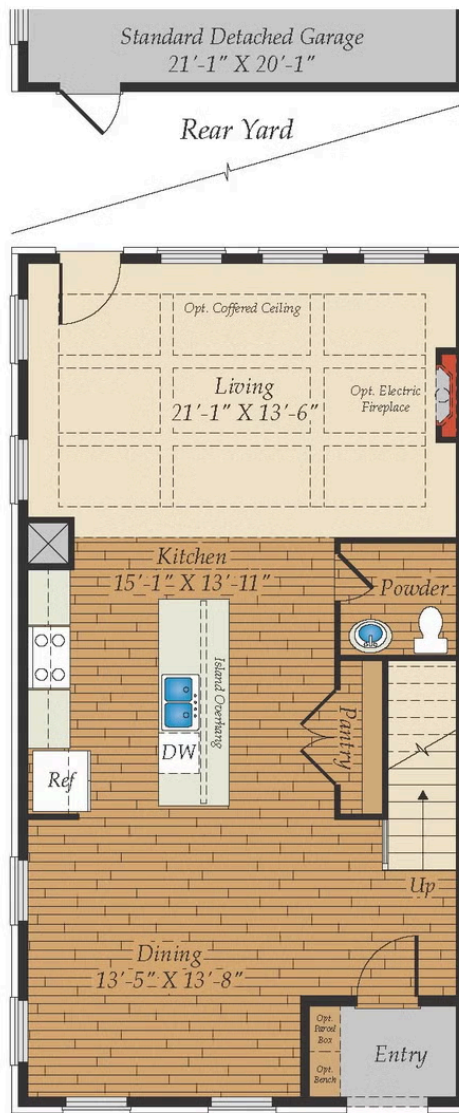
- End Unit
- 2-car Detached Garage
- Back Yard
- Optional Retractable Sliding Door opens Living Space to Back Yard
- Central Kitchen
- Primary Bedroom Suite with Optional Spa Bath
- Bonus Room, 4th Bedroom or Loft
- Optional Covered or Uncovered Rooftop Terrace

## Available Elevations



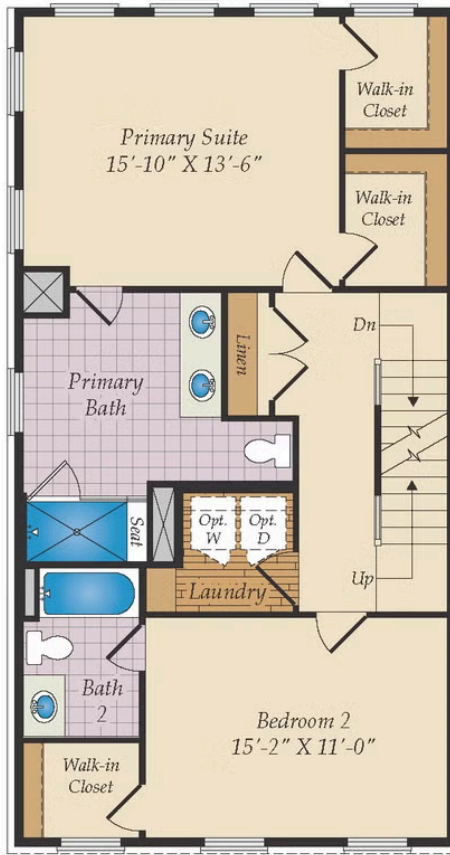
Brick/stone fronts, chimneys, bay windows, keystones, exterior trim, garage doors, light fixtures, dormers, and gables shown on elevations are optional features. Actual product specifications may vary in dimension or detail from these drawings. This insert is for illustrative purposes only and is not part of the legal contract. All dimensions are approximate. Many available options are not shown.

# FIRST FLOOR

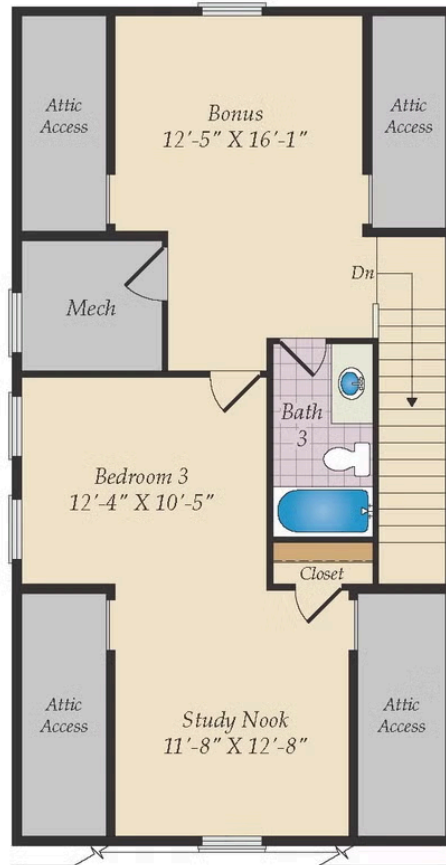


Brick/stone fronts, chimneys, bay windows, keystones, exterior trim, garage doors, light fixtures, dormers, and gables shown on elevations are optional features. Actual product specifications may vary in dimension or detail from these drawings. This insert is for illustrative purposes only and is not part of the legal contract. All dimensions are approximate. Many available options are not shown.

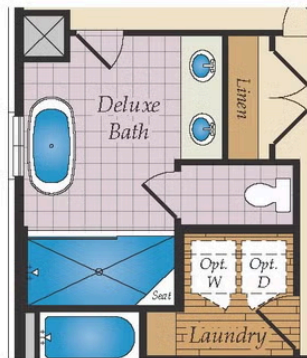
SECOND FLOOR & THIRD FLOOR



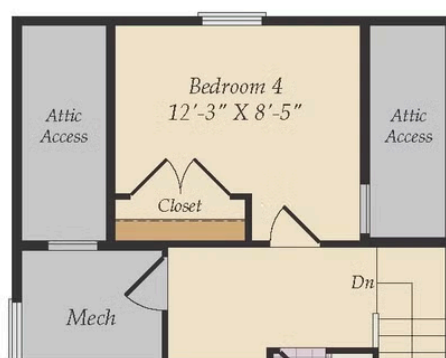
SECOND FLOOR



THIRD FLOOR



OPT. DELUXE BATH - 5 PIECE BATH FOR PRIMARY SUITE



OPT. BEDROOM 4 FOR THE THIRD FLOOR