



3 - 5 Beds

2.5 - 4.5 Baths

2,354 - 2,773 Sq Ft

COMMUNITY CONTACT

6813 ARCHLINE DRIVE (GPS: 6800
FASHION PLACE)
LAUREL, MD 20707
(301) 517-7314
INFO@CARUSOHOMES.COM

Framing the perimeter of The Marais at Konterra, the Boulevard Townes serve as a striking gateway to the Konterra town center. These sleek, contemporary homes are designed to make a statement—offering the perfect blend of modern architecture, urban energy, and upscale comfort.

The Boulevard 2200 is a premier end unit offering expansive living space, large windows for abundant natural light, a larger chef-inspired kitchen, and luxury upgrades throughout for a truly elevated living experience.

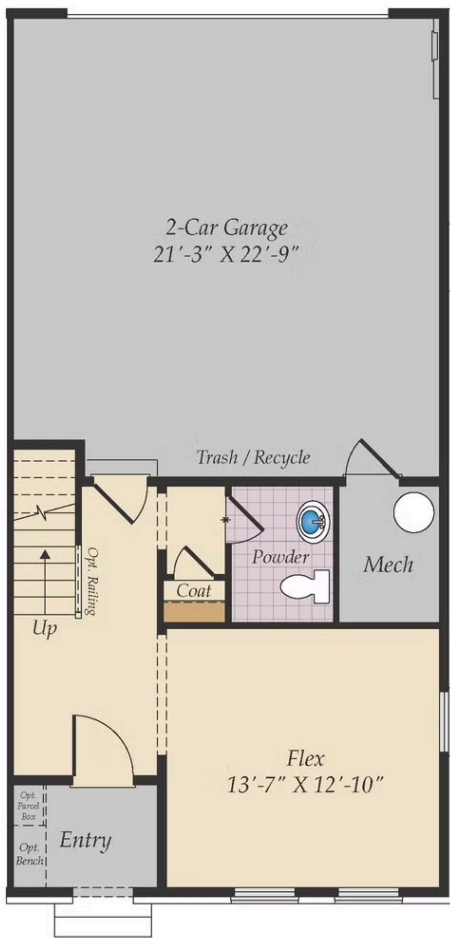
- End Unit
- 2-car Garage
- Rec Room or Optional Bedroom 4 on lower level
- Expanded kitchen with large island and walk-in pantry
- Optional deck
- Primary Bedroom Suite with Optional Spa Bath
- Optional Rooftop Terrace (with or without Loft)

Available Elevations



Brick/stone fronts, chimneys, bay windows, keystones, exterior trim, garage doors, light fixtures, dormers, and gables shown on elevations are optional features. Actual product specifications may vary in dimension or detail from these drawings. This insert is for illustrative purposes only and is not part of the legal contract. All dimensions are approximate. Many available options are not shown.

LOWER LEVEL



OPT. BEDROOM 4 w/ BATH

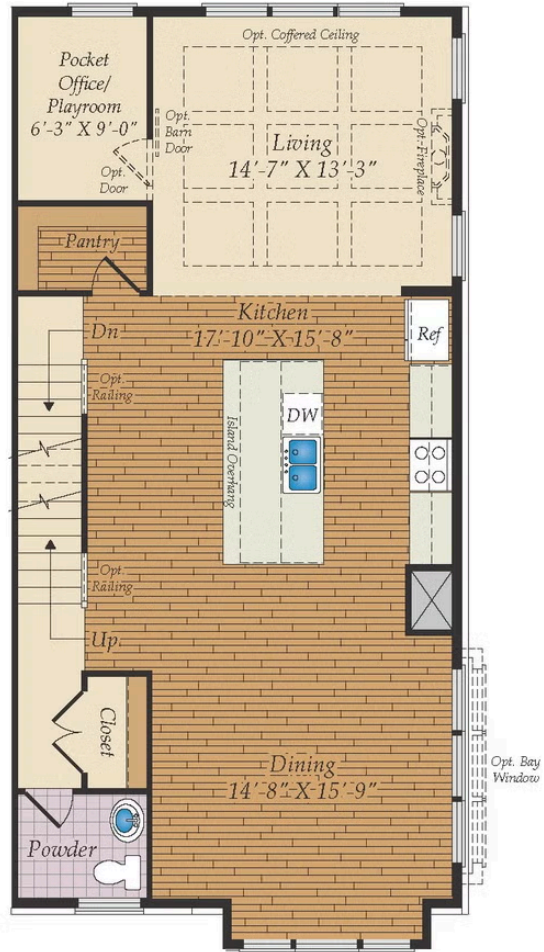
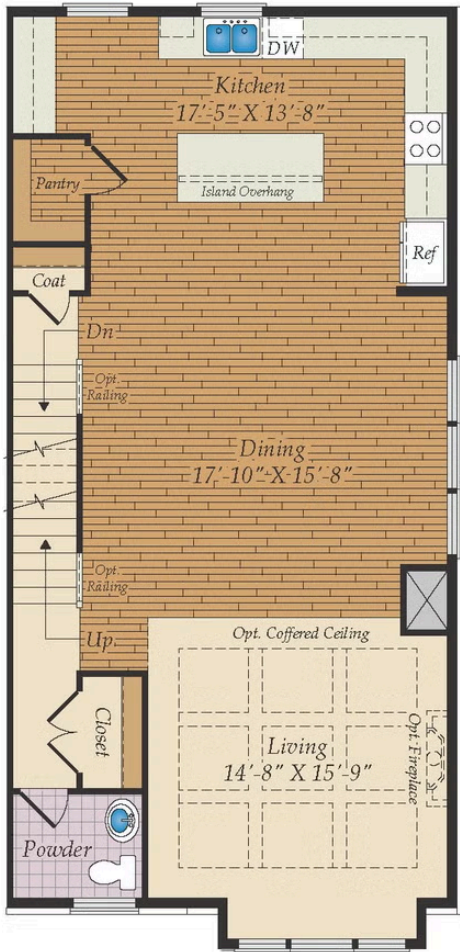
FIRST FLOOR



OPT. CANTILEVERED DECK



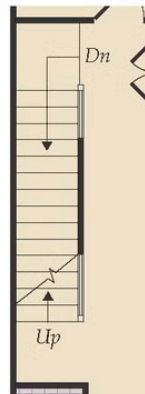
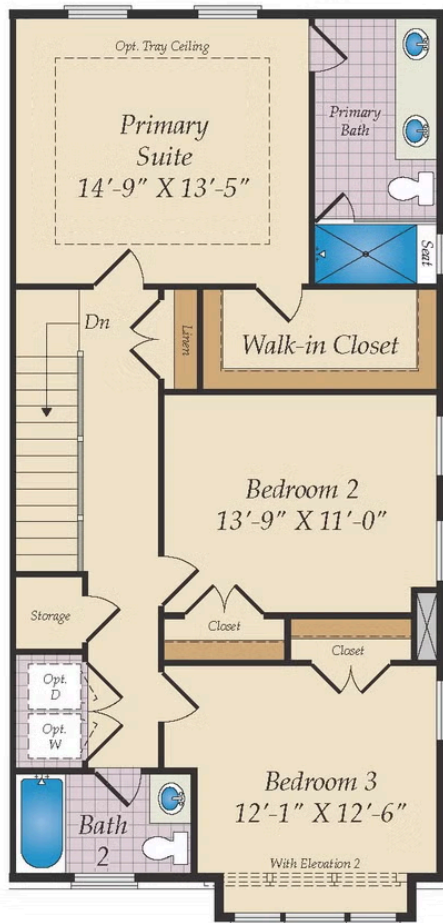
OPT. CANTILEVERED DECK W/ CENTERED KITCHEN



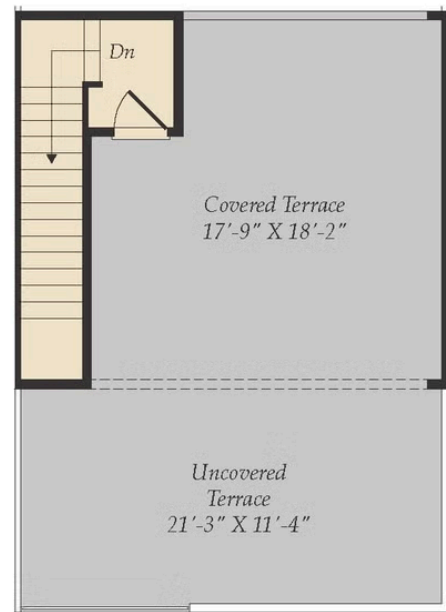
OPT. MIDDLE KITCHEN

Brick/stone fronts, chimneys, bay windows, keystones, exterior trim, garage doors, light fixtures, dormers, and gables shown on elevations are optional features. Actual product specifications may vary in dimension or detail from these drawings. This insert is for illustrative purposes only and is not part of the legal contract. All dimensions are approximate. Many available options are not shown.

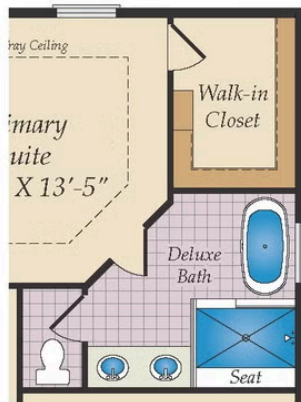
SECOND FLOOR AND MORE OPTIONS



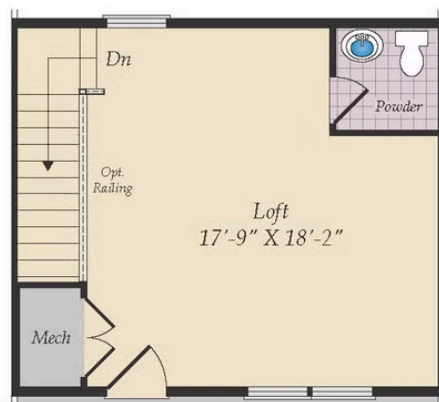
OPT. STAIRS TO OPT. TERRACE



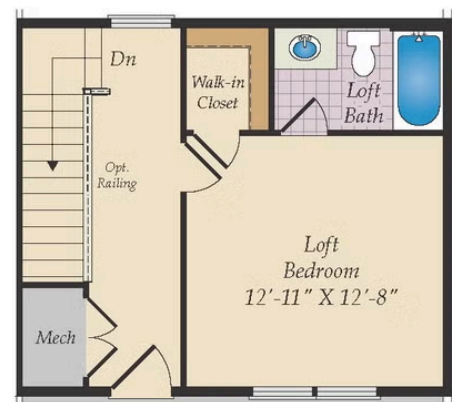
OPT. TERRACE



OPT. DELUXE 5 PIECE BATH



OPT. LOFT w/ POWDER



OPT. LOFT BEDROOM w/ BATH

Brick/stone fronts, chimneys, bay windows, keystones, exterior trim, garage doors, light fixtures, dormers, and gables shown on elevations are optional features. Actual product specifications may vary in dimension or detail from these drawings. This insert is for illustrative purposes only and is not part of the legal contract. All dimensions are approximate. Many available options are not shown.