



3 Beds

2.5 - 4.5 Baths

2,085 - 2,428 Sq Ft

COMMUNITY CONTACT

6813 ARCHLINE DRIVE (GPS: 6800
FASHION PLACE)
LAUREL, MD 20707
(301) 517-7314
INFO@CARUSOHOMES.COM

Framing the perimeter of The Marais at Konterra, the Boulevard Townes serve as a striking gateway to the Konterra town center. These sleek, contemporary homes are designed to make a statement—offering the perfect blend of modern architecture, urban energy, and upscale comfort.

The Boulevard 2000 is the largest interior unit that is smartly designed to maximize every inch of space for comfort and elevated living.

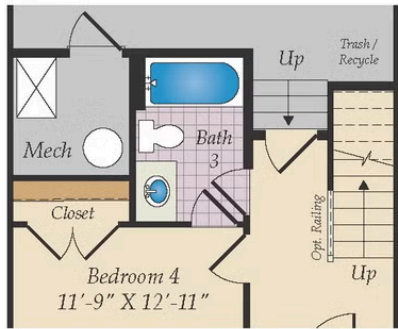
- Interior Unit
- 2-car Garage
- Study or Optional Bedroom 4 on lower level
- Optional Cantilever deck
- Central Kitchen
- Primary Bedroom Suite with Optional Spa Bath
- Optional Rooftop Terrace (with or without Loft)

Available Elevations

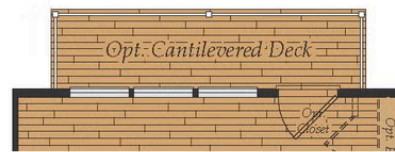


Brick/stone fronts, chimneys, bay windows, keystones, exterior trim, garage doors, light fixtures, dormers, and gables shown on elevations are optional features. Actual product specifications may vary in dimension or detail from these drawings. This insert is for illustrative purposes only and is not part of the legal contract. All dimensions are approximate. Many available options are not shown.

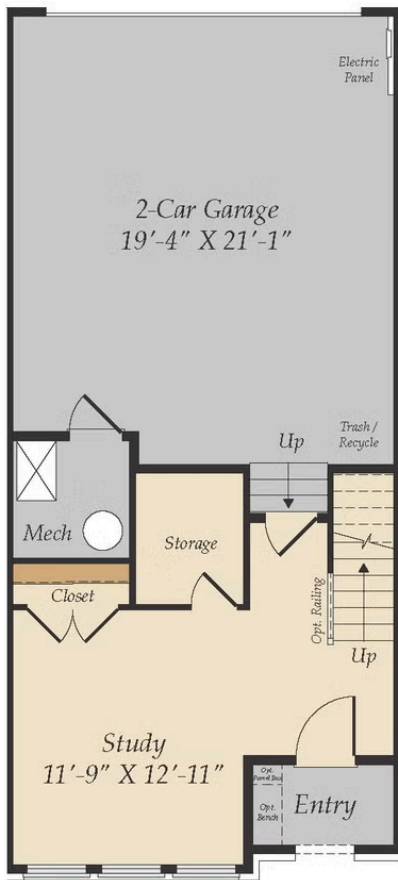
FIRST FLOOR & LOWER LEVEL



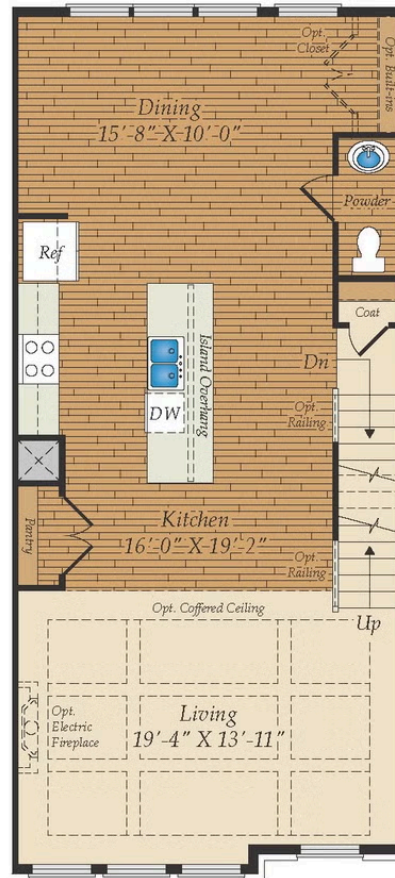
OPT. BEDROOM 4 w/ BATH



OPT. CANTILEVERED DECK



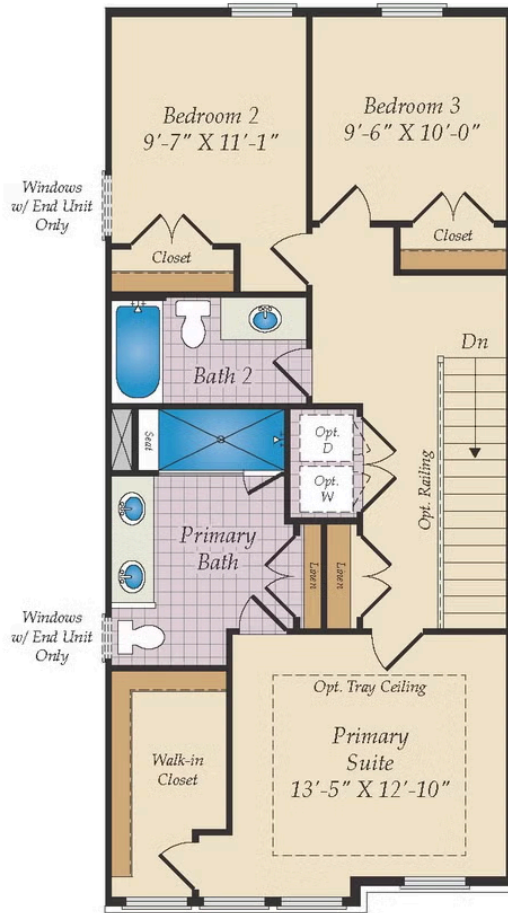
LOWER LEVEL



FIRST FLOOR

Brick/stone fronts, chimneys, bay windows, keystones, exterior trim, garage doors, light fixtures, dormers, and gables shown on elevations are optional features. Actual product specifications may vary in dimension or detail from these drawings. This insert is for illustrative purposes only and is not part of the legal contract. All dimensions are approximate. Many available options are not shown.

SECOND FLOOR AND MORE OPTIONS

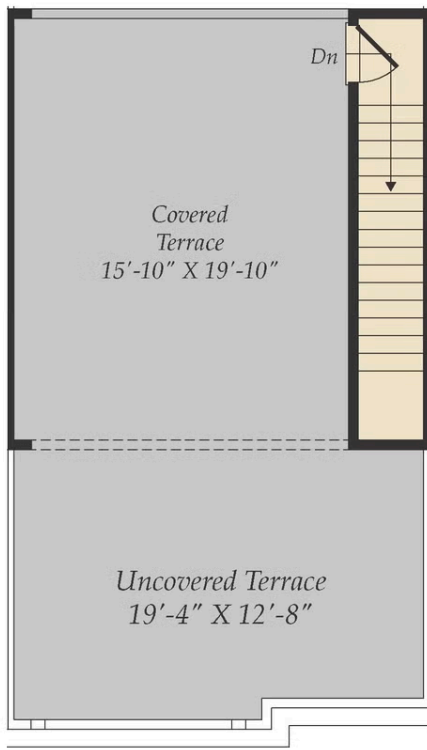


OPT. STAIRS TO
OPT. TERRACE

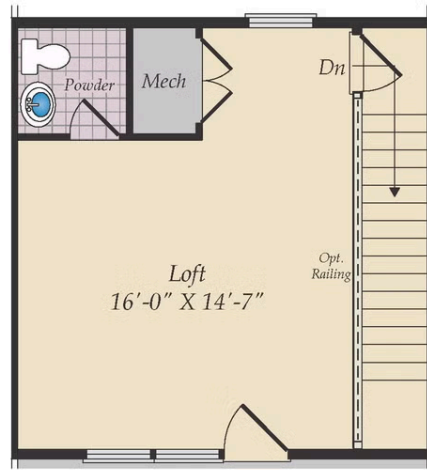


OPT. DELUXE 5 PIECE BATH

OPT. THIRD FLOOR



OPT. TERRACE



OPT. LOFT w/ POWDER



OPT. LOFT BEDROOM w/ BATH