



2 - 5 Beds

2.5 - 5 Baths

1,640 - 2,206 Sq Ft

COMMUNITY CONTACT

6813 ARCHLINE DRIVE (GPS: 6800
FASHION PLACE)
LAUREL, MD 20707
(301) 517-7314
INFO@CARUSOHOMES.COM

Framing the perimeter of The Marais at Konterra, the Boulevard Townes serve as a striking gateway to the Konterra town center. These sleek, contemporary homes are designed to make a statement—offering the perfect blend of modern architecture, urban energy, and upscale comfort.

The Boulevard 1800 is a spacious interior unit with thoughtfully planned living areas that blend comfort and efficiency.

- Interior Unit
- 1-car Garage with Flex Space or 2-car Tandem Garage
- Central Kitchen
- Flex Space on Main Level
- Optional Cantilever Deck
- Primary Bedroom Suite
- Optional Rooftop Terrace (with or without Loft)

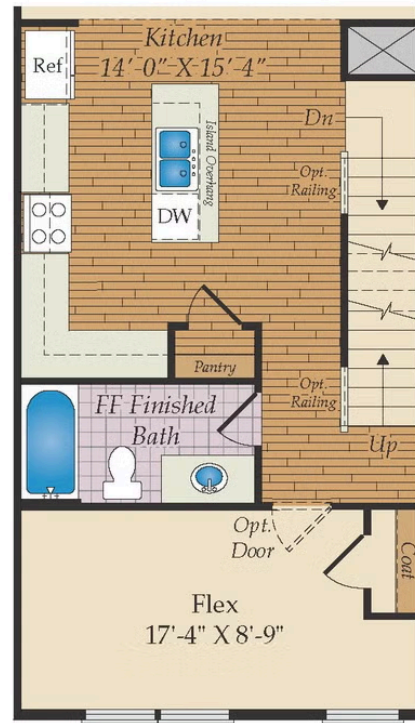
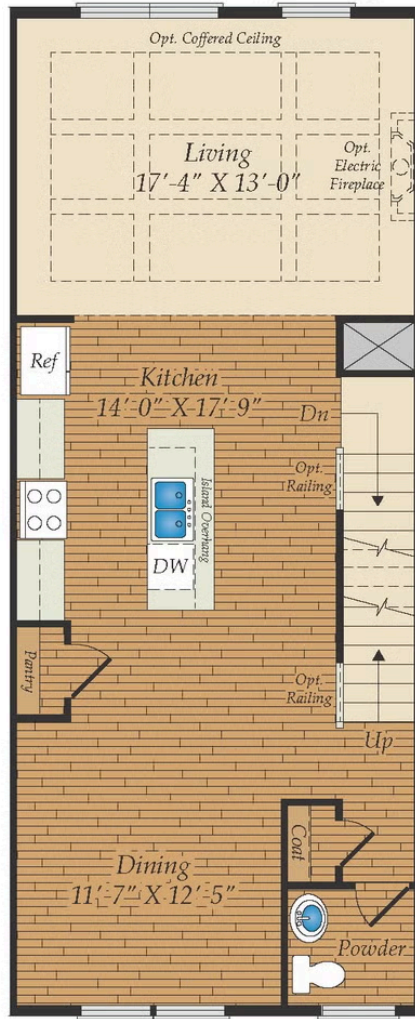
Available Elevations



FIRST FLOOR

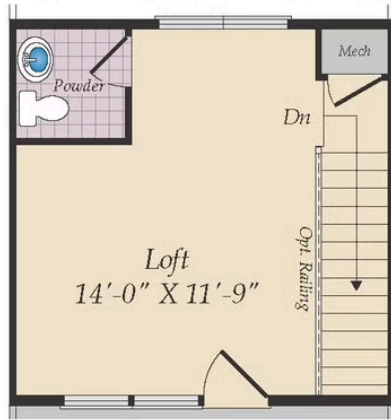


OPT. CANTILEVERED DECK

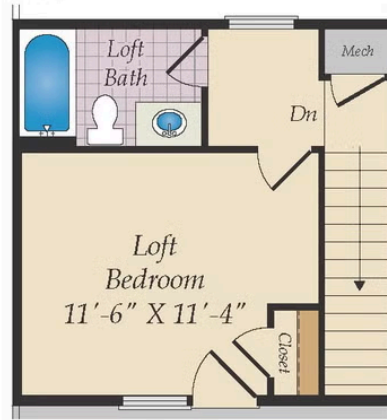


OPT. FLEX ROOM w/ BATH

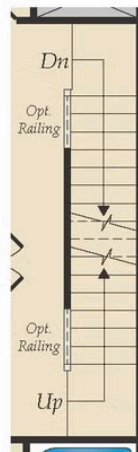
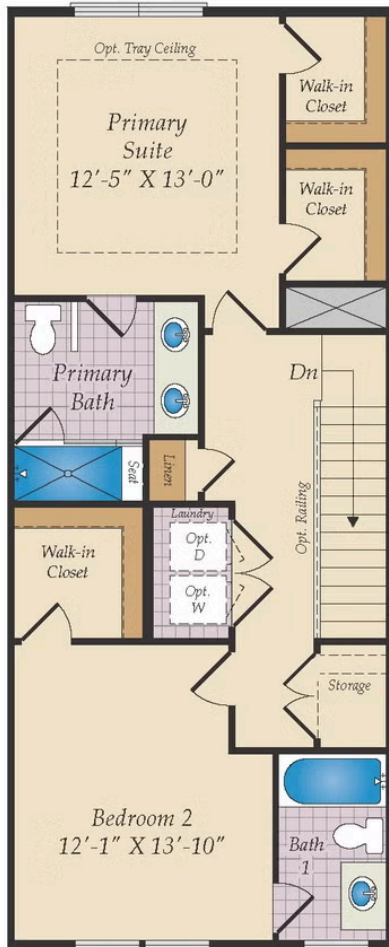
SECOND FLOOR AND MORE OPTIONS



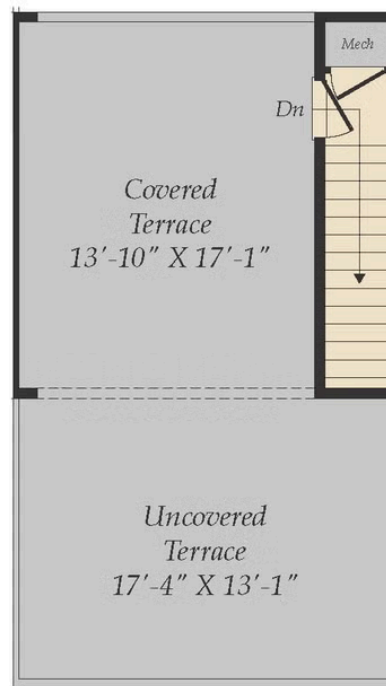
OPT. LOFT w/ POWDER



OPT. LOFT BEDROOM w/ BATH



OPT. STAIRS TO OPT. TERRACE



OPT. TERRACE