



4 - 5 Beds

2.5 - 4 Baths

2,193 - 3,460 Sq Ft

COMMUNITY CONTACT

1104 DANIA DRIVE
 FORT WASHINGTON, MD 20744
 301-517-7314
INFO@CARUSOHOMES.COM

The Michigan plan is a single family home starting at 2,376 square feet, with options for up to 3,272 square feet of living space. The home has a two car garage and several elevations to choose from including several with a covered front porch. Inside the home comes standard with 4 bedrooms and 2.5 baths with the options for up to 6 bedrooms and 4 baths. The main level features a foyer with optional drop zone, a dining room, a large great room with optional fireplace that opens to a large kitchen. The kitchen can be upgraded to a gourmet kitchen with an optional morning room. Also on the main level is a powder room and den that can be converted to an in-law suite with a full bath. Upstairs is a large owner suite with a walk-in closet, a secondary closet and ensuite bath or super bath. Three other bedrooms, a hall bath and a convenient laundry room are on this level. The basement can be left unfinished for storage or the finished option provides a rec room, full bath, media room and an optional den/5th bedroom.

Available Elevations



SECOND FLOOR



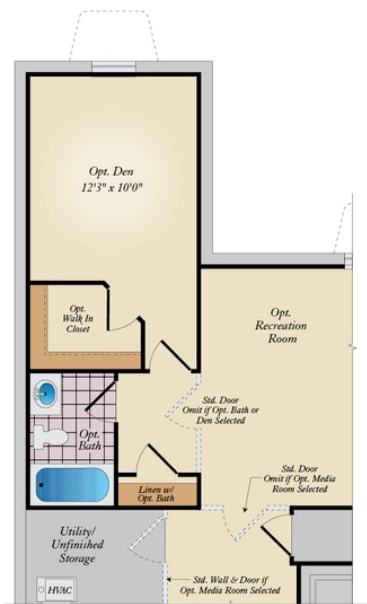
OPT. SUPER BATH



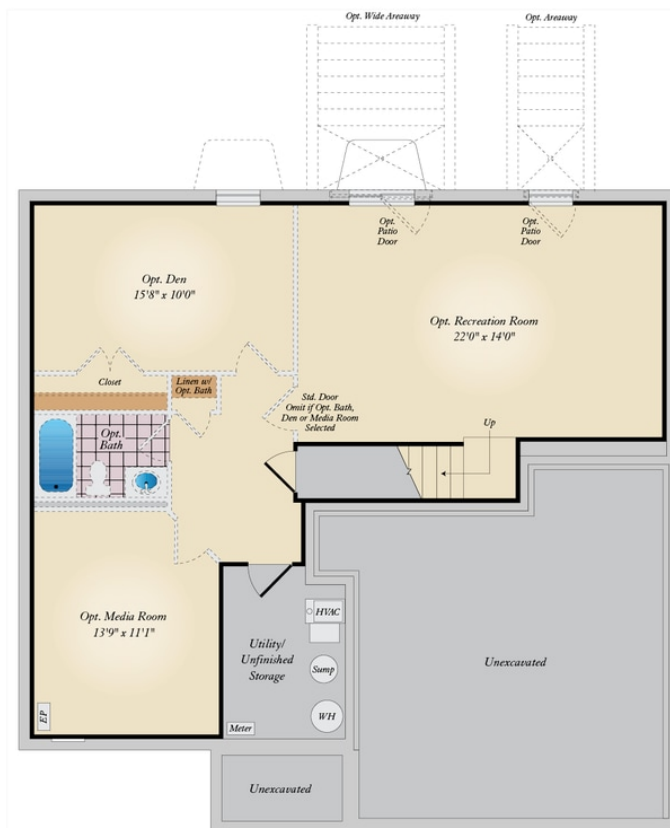
QUESTIONS? ASK CATHARINE

410-928-1161

BASEMENT



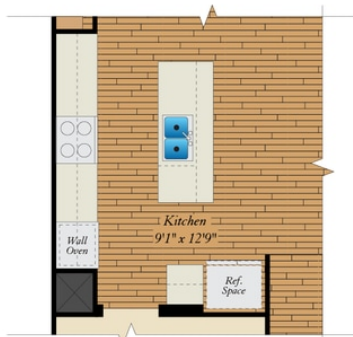
OPT. DEN WITH OPT. MORNING ROOM
ON FIRST FLOOR



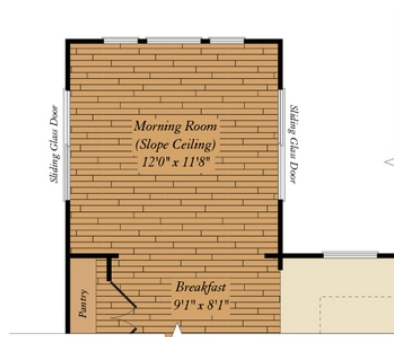
Brick/stone fronts, chimneys, bay windows, keystones, exterior trim, garage doors, light fixtures, dormers, and gables shown on elevations are optional features. Actual product specifications may vary in dimension or detail from these drawings. This insert is for illustrative purposes only and is not part of the legal contract. All dimensions are approximate. Many available options are not shown.



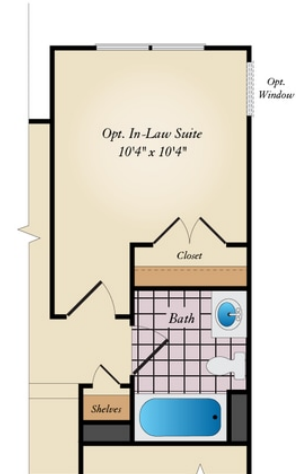
FIRST FLOOR



OPT. GOURMET KITCHEN



OPT. MORNING ROOM



OPT. IN-LAW SUITE