



Single Family

Priced From

**\$1,019,990**

**4 - 6 Beds**

**2.5 - 5.5 Baths**

**3,436 - 7,288 Sq Ft**

**COMMUNITY CONTACT**

15600 BENNINGTON FARMS LANE (GPS:  
16428 BALD EAGLE SCHOOL RD)  
BRANDYWINE, MD 20613  
NONE  
NONE

The Kingsport II is an updated version of our most popular and versatile estate home starting at 3,436 square feet, with options to expand up to 7,288 square feet of luxurious living space. The home can be built with a two or three car garage and is available in many elevations, including brick and stone combination. Inside, plenty of grand features await including a two-story foyer, two-story family room, optional in-law suite and multiple options to upgrade to a gourmet or chef's kitchen. A luxury owner's retreat can be designed with a sitting area, fireplace, multiple walk-in closets and our most exciting Caribbean or California spa bath. Design your basement for entertaining with options like a theater room, wet bar and a den or 5th bedroom. There are hundreds of ways to personalize this elegant home and make it your own.

## Available Elevations



Elevation 4



Elevation 1

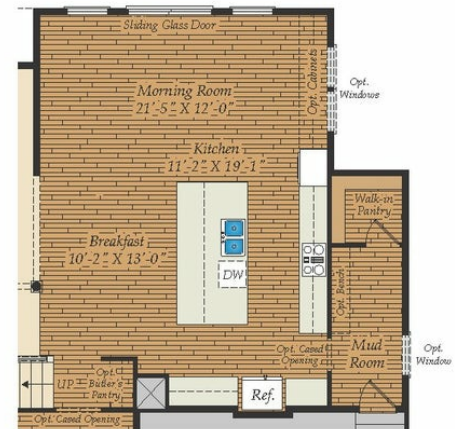


Elevation 2

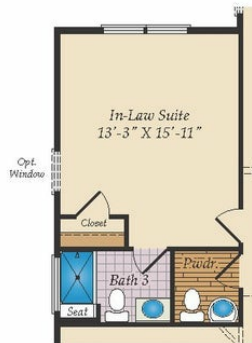
## FIRST FLOOR



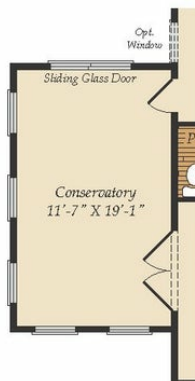
OPT. SCREENED PORCH



OPT. MORNING ROOM  
(Shown with Opt. Deluxe Kitchen)



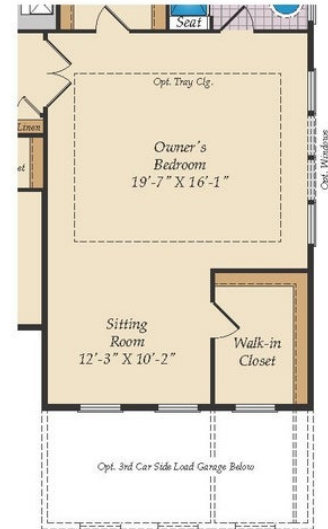
OPT. IN-LAW SUITE



OPT. CONSERVATORY



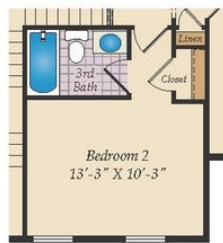
## SECOND FLOOR



OPT. SITTING ROOM W/  
2 CAR SIDE LOAD GARAGE



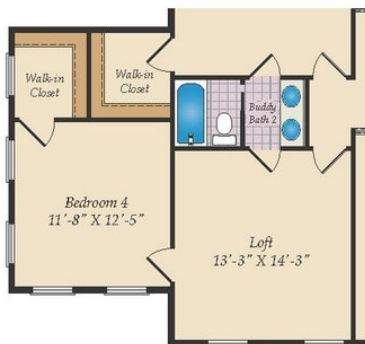
OPT. BUDDY BATH



OPT. 3RD BATH



OPT. CALIFORNIA BATH



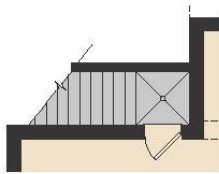
OPT. CONSERVATORY BELOW



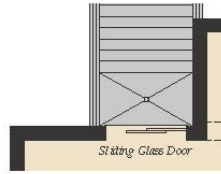
OPT. CARIBBEAN BATH



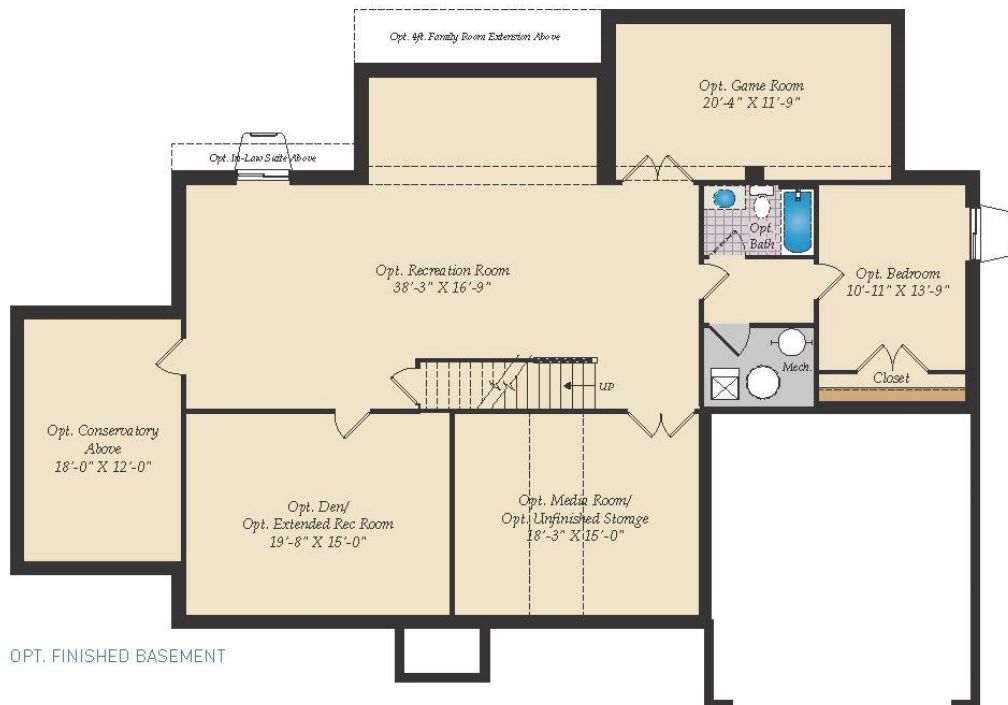
## BASEMENT



OPT. SINGLE AREAWAY



OPT. DOUBLE AREAWAY



OPT. FINISHED BASEMENT