



**3 - 5 Beds**

**2.5 - 3.5 Baths**

**2,372 - 6,006 Sq Ft**

**COMMUNITY CONTACT**

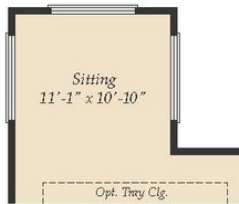
15600 BENNINGTON FARMS LANE (GPS:  
 16428 BALD EAGLE SCHOOL RD)  
 BRANDYWINE, MD 20613  
 NONE  
 NONE

The Baywood plan is a single family ranch style home and features the highly sought after first floor master suite starting at 2,372 sq. ft. with the capability of up to 6,006 sq. ft. and up to 5 bedrooms. Enjoy one-level living, or add a second floor for additional space. Choose from hundreds of luxury options and finishes to design your dream...screened porch, gourmet kitchen, stone or modern fireplaces, 2nd floor loft, spa baths, and basements made for entertaining with theater room, wet bar and much more!

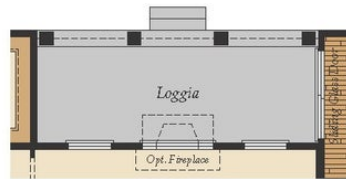
## Available Elevations



## FIRST FLOOR



OPT. SITTING ROOM AT  
OWNER'S SUITE



OPT. LOGGIA  
(Available only with  
Opt. Extended Breakfast)



OPT. MORNING ROOM  
(Available only with  
Opt. Extended Breakfast)



OPT. 2 CAR SIDE GARAGE

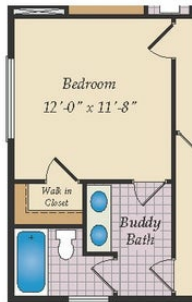
Opt. 3-Car Side Load Garage  
23'-5" X 30'-11"

OPT. 3 CAR SIDE GARAGE

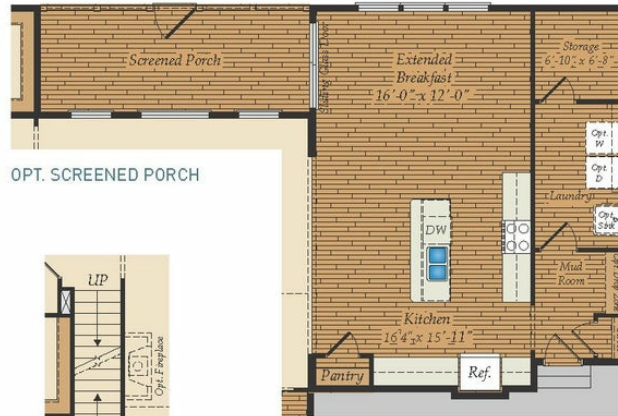
## MORE OPTIONS



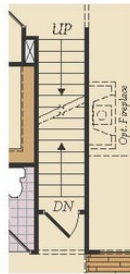
OPT. CALIFORNIA OWNER'S BATH



OPT. BUDDY BATH

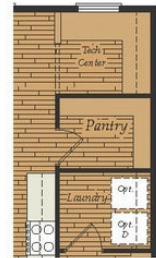


OPT. SCREENED PORCH



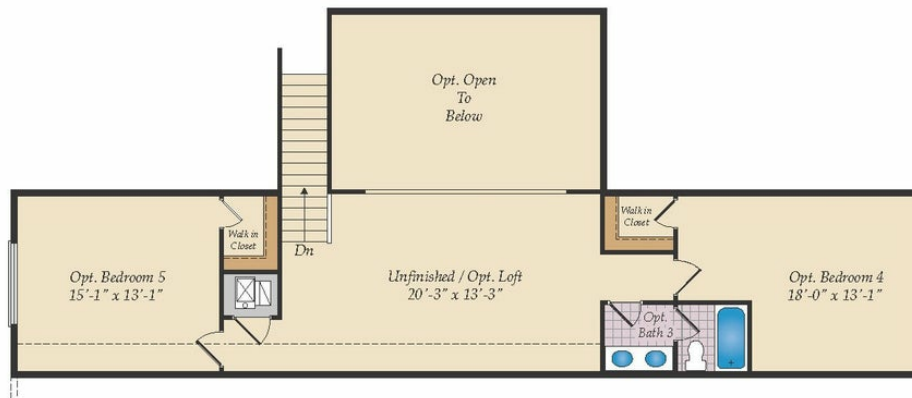
OPT. STAIRS  
TO OPTIONAL  
OPT. 2ND FLOOR

OPT. EXTENDED BREAKFAST



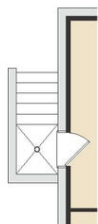
OPT. TECH. CENTER

## OPTIONAL SECOND FLOOR

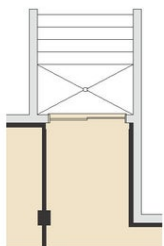


OPT. FINISHED 2ND FLOOR

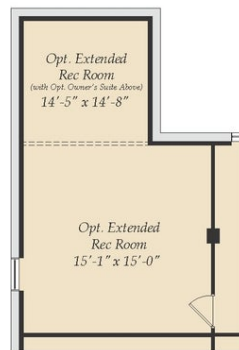
## BASEMENT



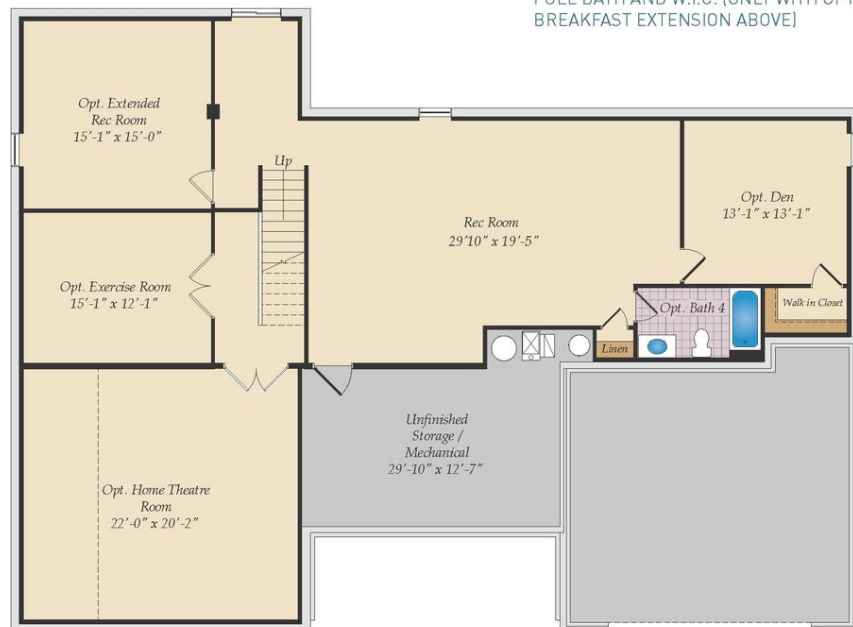
OPT. SINGLE DOOR  
AREAWAY



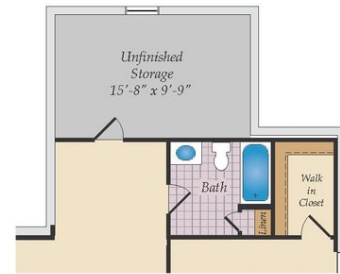
OPT. DOUBLE DOOR  
AREAWAY



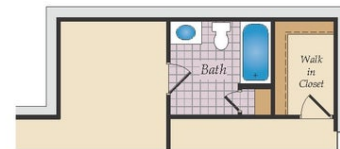
EXTENDED REC. ROOM (ONLY WITH  
OWNER'S SITTING ROOM ABOVE)



OPT. FINISHED BASEMENT



UNFINISHED STORAGE (ONLY WITH  
MORNING ROOM ABOVE)



FULL BATH AND W.I.C. (ONLY WITH OPT.  
BREAKFAST EXTENSION ABOVE)