



Single Family  
 Priced From  
**\$734,990**

**4 - 5 Beds**

**2.5 - 4.5 Baths**

**2,720 - 4,616 Sq Ft**

**COMMUNITY CONTACT**

14000 PECAN RIDGE WAY  
 BOWIE, MD 20715  
 (301) 517-7314  
 INFO@CARUSOHOMES.COM

The Monterey II plan is a single family home starting at 2,720 square feet, with options for up to 4,729 square feet of living space. The home has a two car garage and several elevations to choose from including several with a covered front porch. Inside the home offers an open floor plan that is perfect for entertaining, with an option to extend the kitchen to add an oversized center island. This home is well-designed with plenty of options for buyers to design a dream family home. Total base square footage includes recreation room incentive.

## Available Elevations



Elevation 30



Elevation 31

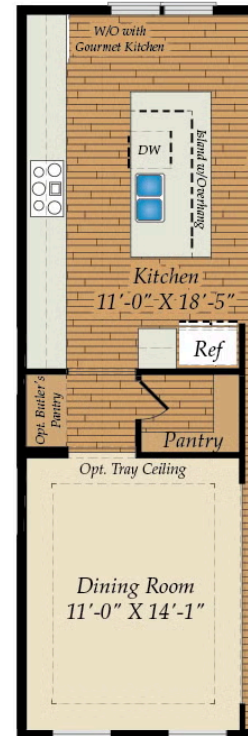
## FIRST FLOOR



OPT. MORNING ROOM



OPT. SIDE LOAD GARAGE



OPT. EXTENDED KITCHEN



OPT. BOX BAY AT DINING

## SECOND FLOOR



OPT. PRIMARY SPA BATH



OPT. BATH 3

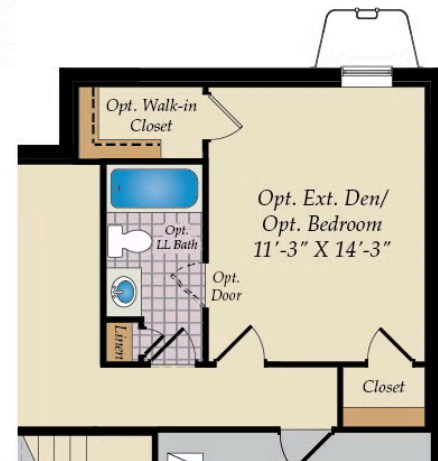
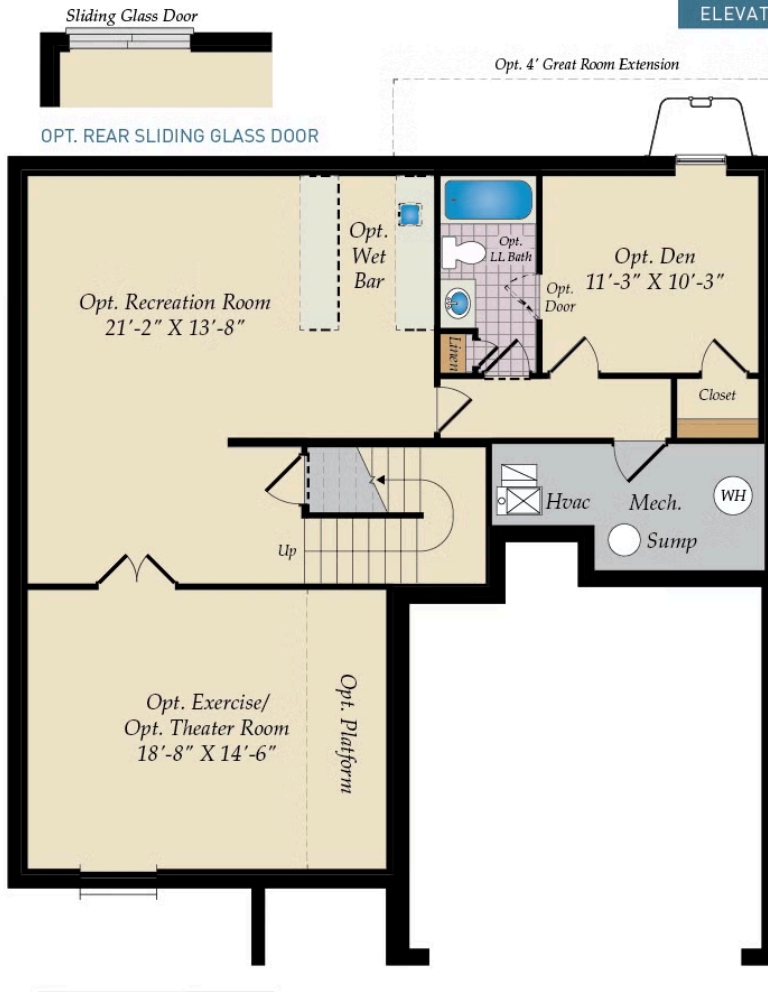
## BASEMENT



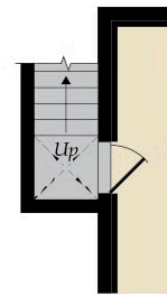
OPT. UNFINISHED STORAGE/OPT. FINISHED EXT. REC. RM.  
W/MORNING ROOM ABOVE



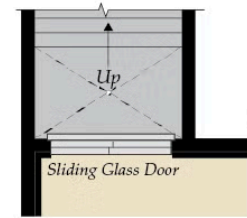
ELEVATION 4 - Shown with Opt. Brick



OPT. EXTENDED DEN



OPT. SIDE AREAWAY



OPT. DOUBLE AREAWAY