



4 - 6 Beds

4.5 - 6.5 Baths

3,518 - 5,990 Sq Ft

COMMUNITY CONTACT

14000 PECAN RIDGE WAY
BOWIE, MD 20715
(301) 517-7314
INFO@CARUSOHOMES.COM

Our brand-new Lure plan! With multiple levels of living and flexible options, this floorplan blends comfort, entertainment, and privacy in one beautiful home.

- **Main Level:** A welcoming in-law suite offers privacy for guests, while the great room, kitchen, and dining room create the heart of the home. A library provides a quiet retreat, and the covered patio extends gatherings outdoors. The main level also includes a full bath and powder room for convenience.
- **Second Level:** The spacious primary suite is a relaxing escape, paired with a versatile game room that can also be a fifth bedroom. Three additional secondary bedrooms and three full baths provide comfort for everyone.
- **Optional Basement:** Expand your home with a finished basement featuring a rec room, bedroom, full bath, and ...

Available Elevations



Elevation 30: Shown with Opt. Metal Roof above the garage & front porch



Elevation 31: Shown with Opt. Metal Roof above the garage & front porch

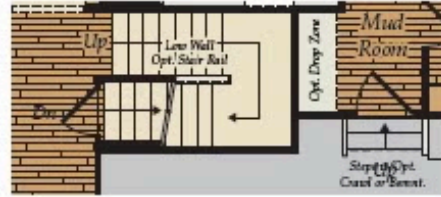


Elevation 50: Shown with Opt. Metal Roof above the garage & front porch

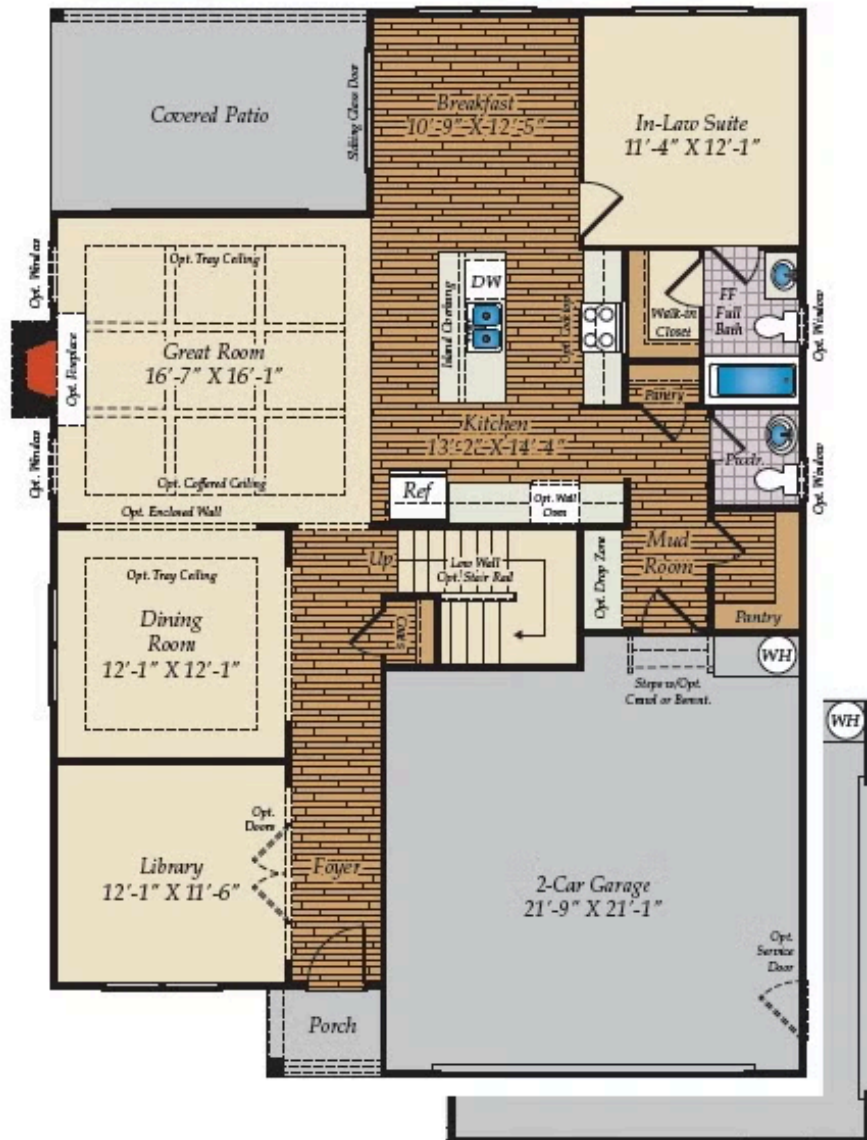
FIRST FLOOR



OPT. MORNING ROOM



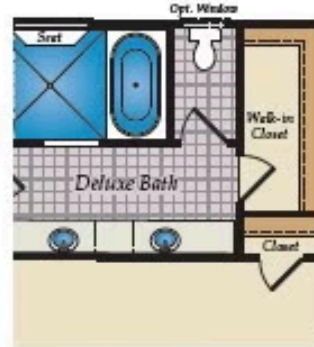
STAIRS w/ OPT. BASEMENT



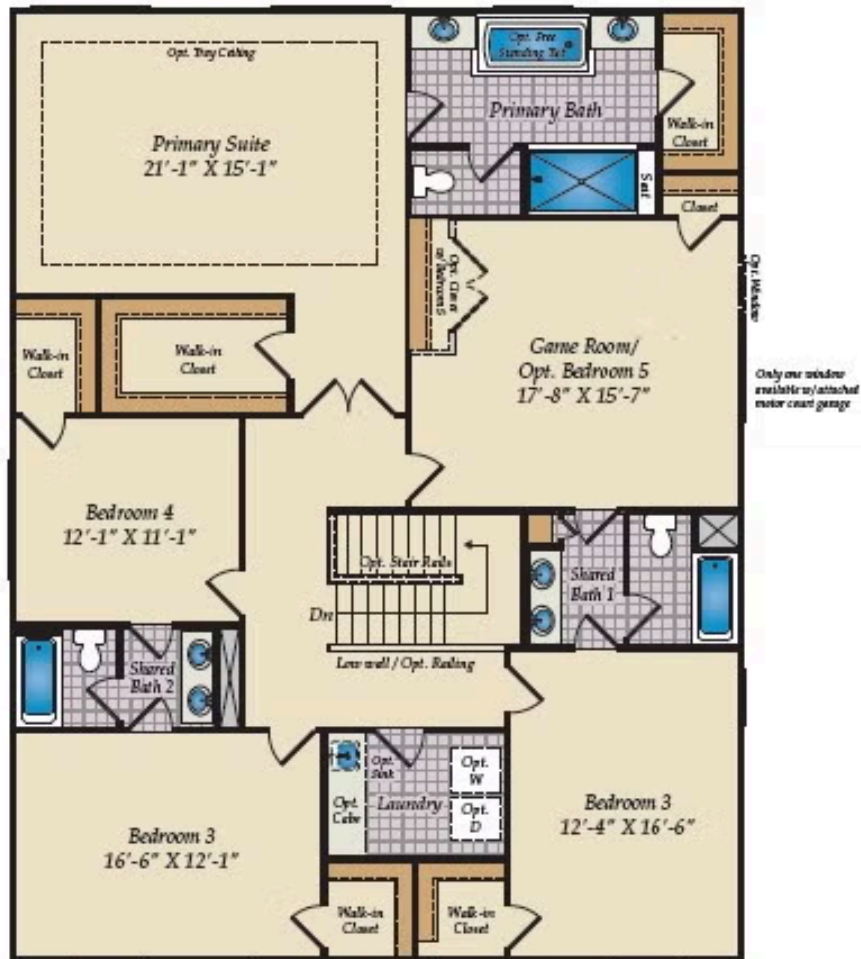
OPT. 2-CAR SIDE LOAD GARAGE

Brick/stone fronts, chimneys, bay windows, keystones, exterior trim, garage doors, light fixtures, dormers, and gables shown on elevations are optional features. Actual product specifications may vary in dimension or detail from these drawings. This insert is for illustrative purposes only and is not part of the legal contract. All dimensions are approximate. Many available options are not shown.

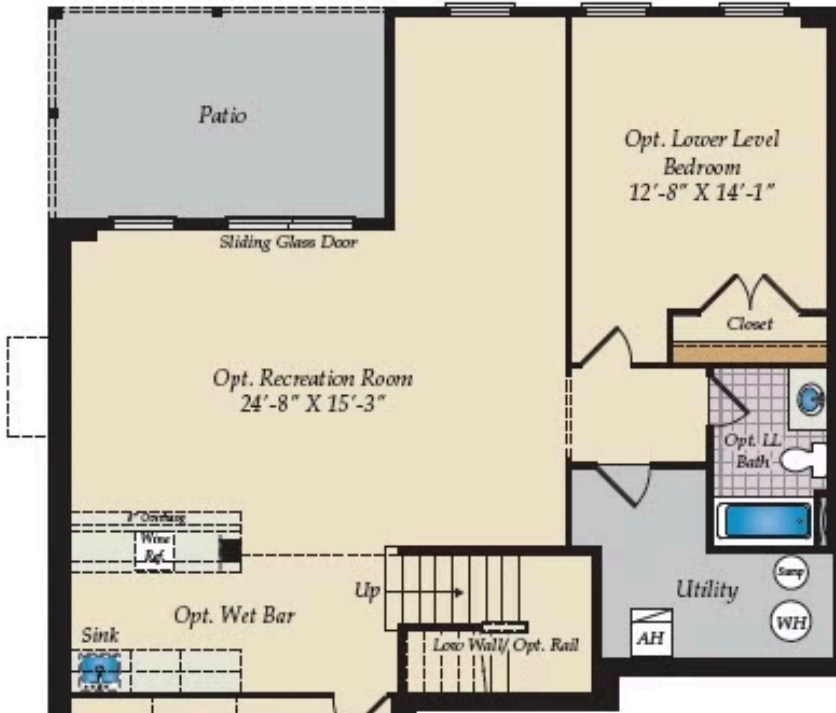
SECOND FLOOR



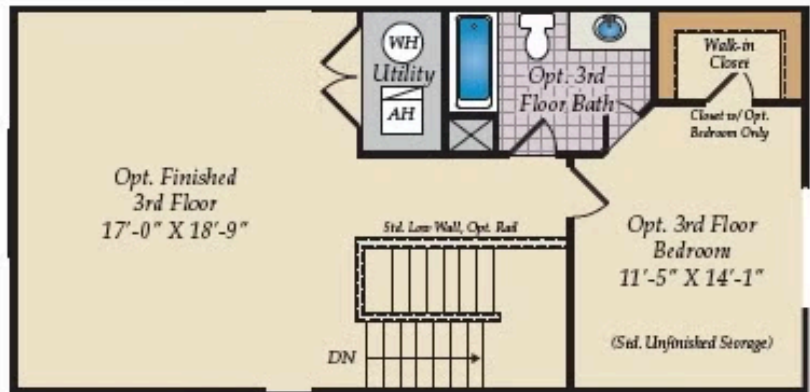
OPT. DELUXE BATH



OPT. LOWER LEVEL



OPT. FINISHED BASEMENT



OPT. FINISHED THIRD FLOOR

OPT. THIRD FLOOR