



**4 - 6 Beds**

**4.5 - 6.5 Baths**

**3,518 - 5,990 Sq Ft**

**COMMUNITY CONTACT**

14000 PECAN RIDGE WAY  
BOWIE, MD 20715  
(301) 517-7314  
INFO@CARUSOHOMES.COM

Our brand-new Lure plan! With multiple levels of living and flexible options, this floorplan blends comfort, entertainment, and privacy in one beautiful home.

- **Main Level:** A welcoming in-law suite offers privacy for guests, while the great room, kitchen, and dining room create the heart of the home. A library provides a quiet retreat, and the covered patio extends gatherings outdoors. The main level also includes a full bath and powder room for convenience.
- **Second Level:** The spacious primary suite is a relaxing escape, paired with a versatile game room that can also be a fifth bedroom. Three additional secondary bedrooms and three full baths provide comfort for everyone.
- **Optional Basement:** Expand your home with a finished basement featuring a rec room, bedroom, full bath, and ...

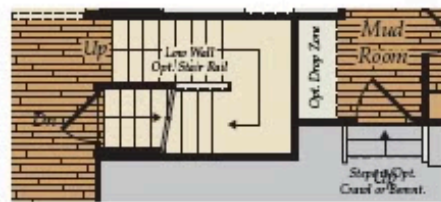
## Available Elevations



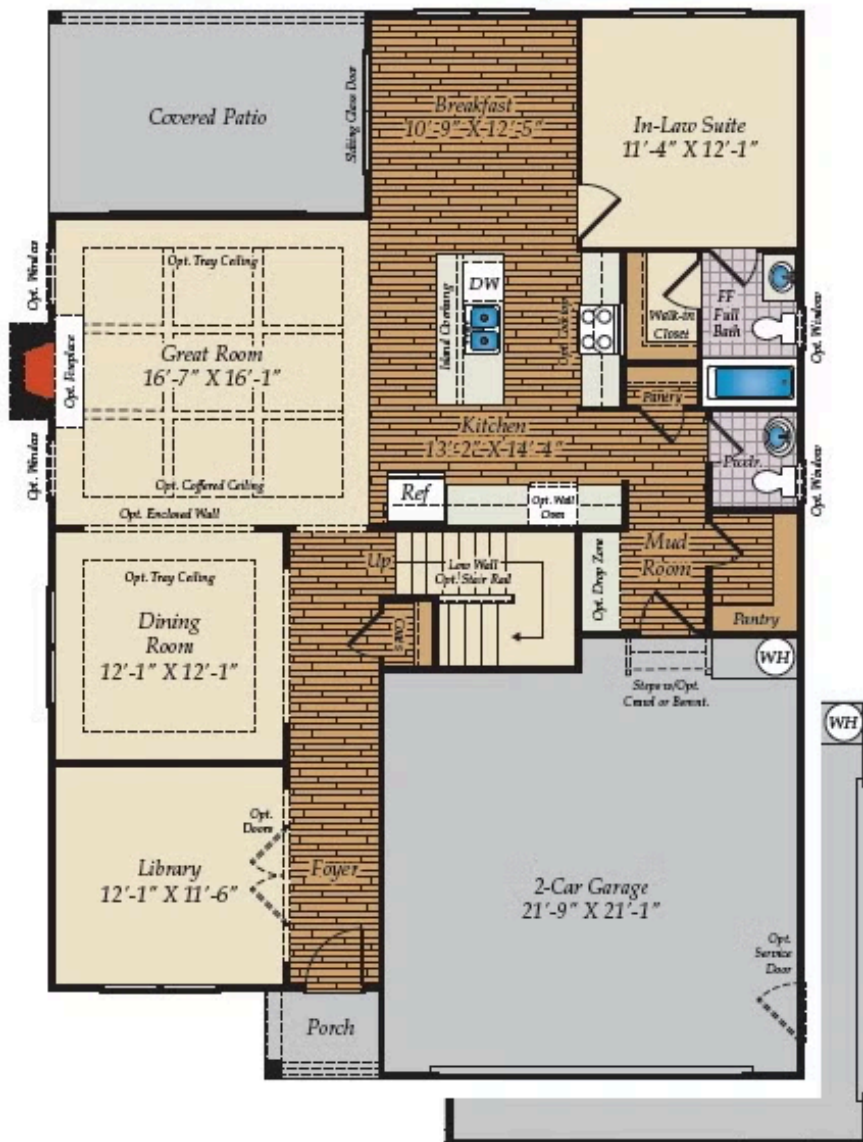
## FIRST FLOOR



OPT. MORNING ROOM

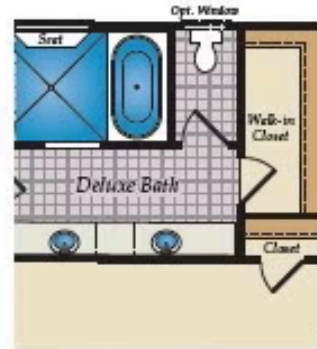


STAIRS w/ OPT. BASEMENT

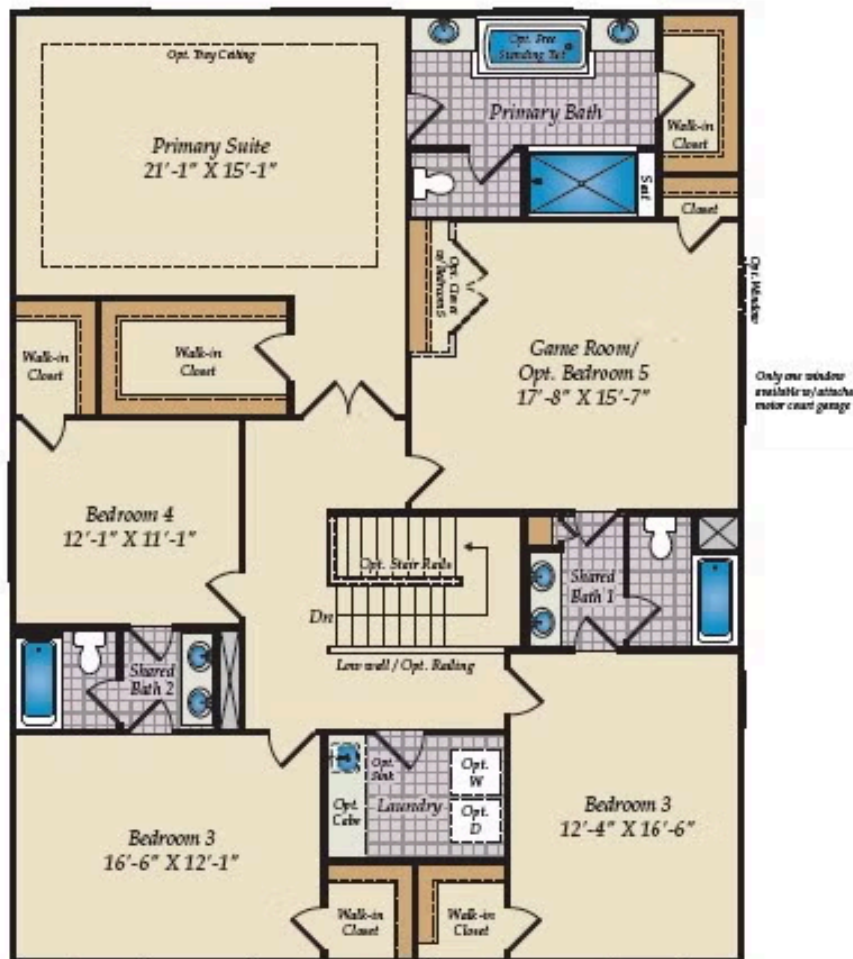


OPT. 2-CAR SIDE LOAD GARAGE

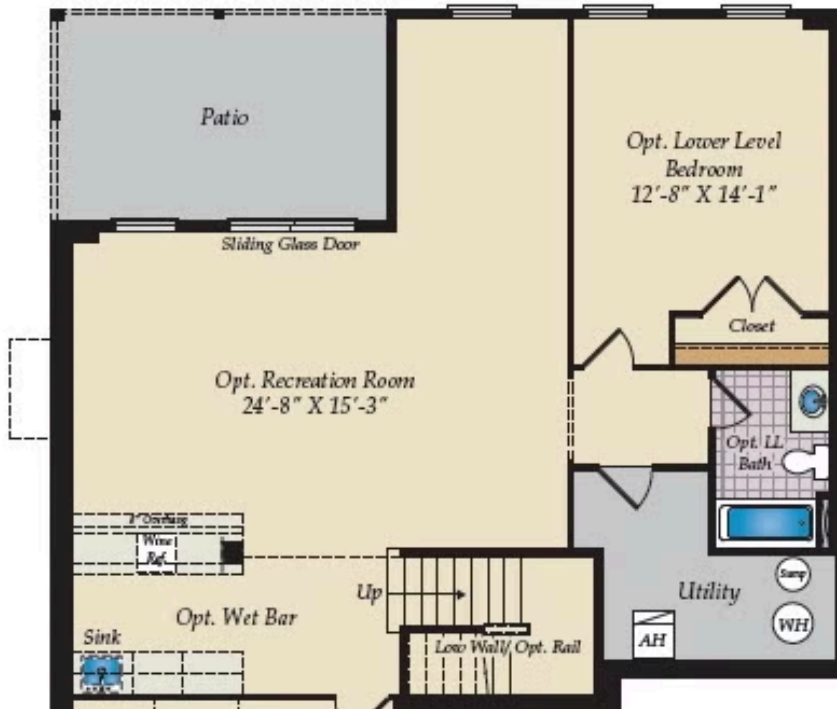
## SECOND FLOOR



OPT. DELUXE BATH

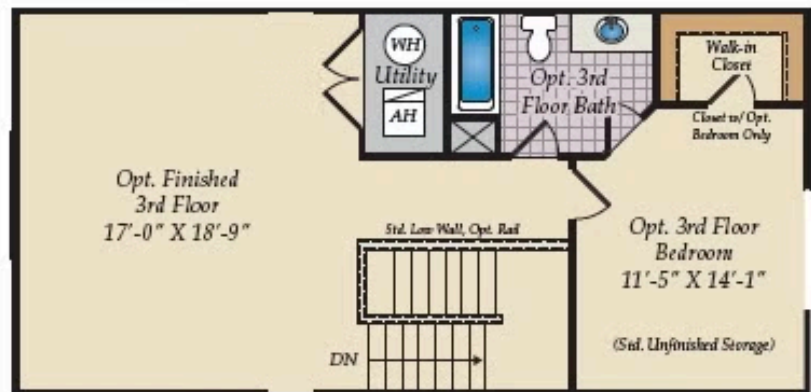


## OPT. LOWER LEVEL



OPT. FINISHED BASEMENT

## OPT. THIRD FLOOR



OPT. FINISHED THIRD FLOOR