



4 - 5 Beds

2.5 - 4.5 Baths

2,858 - 5,431 Sq Ft

COMMUNITY CONTACT

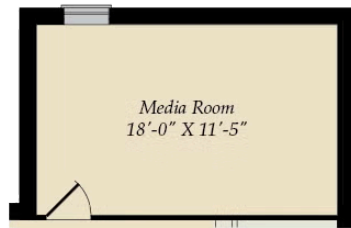
14000 PECAN RIDGE WAY
 BOWIE, MD 20715
 (301) 517-7314
 INFO@CARUSOHOMES.COM

The popular Emory II Craftsman plan is a single family home starting at 2,962 square feet, with options to expand up to 5,375 square feet of living space. The home has a two car garage and many elevations, including brick and stone combination fronts and craftsman styles. Inside, the home comes standard with 4 bedrooms and 2.5 baths with the option to add an additional bedroom and full bath in the basement. This dream home offers many upgrades such as a gourmet kitchen, stone or modern fireplace and a grand owner suite with optional spa bath. Choose from hundreds of features to personalize this home and make it your own. Total base square footage includes recreation room incentive.

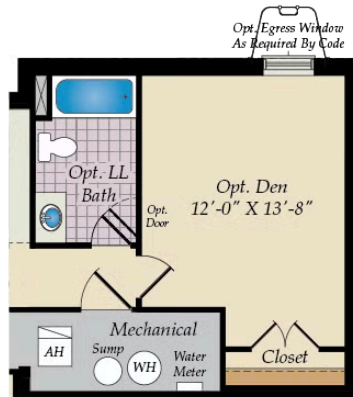
Available Elevations



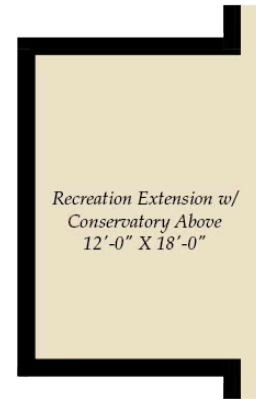
BASEMENT



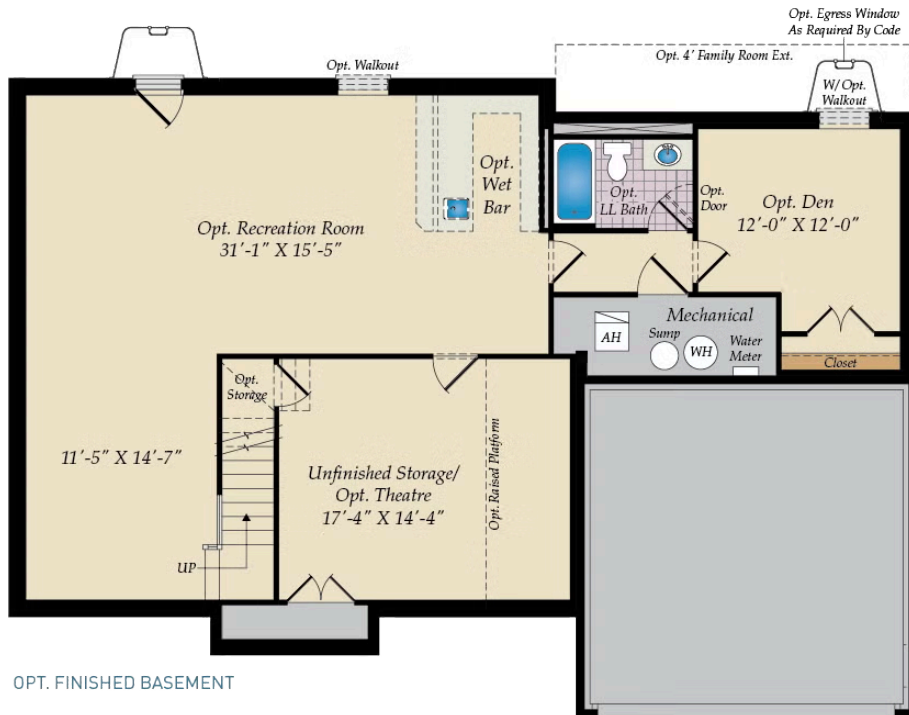
OPT.MEDIA ROOM W/MORNING ROOM ABOVE



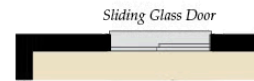
OPT.DEN EXTENSION W/GREAT ROOM EXT. ABOVE



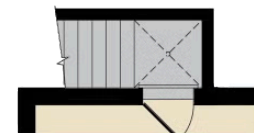
OPT. REC. EXTENSION W/ CONSERVATORY ABOVE



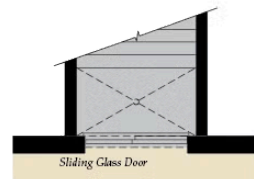
OPT. FINISHED BASEMENT



OPT. WALKOUT BASEMENT



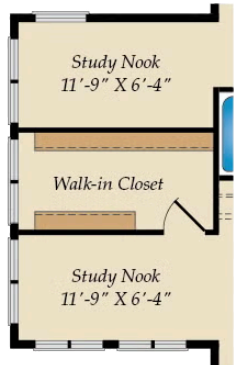
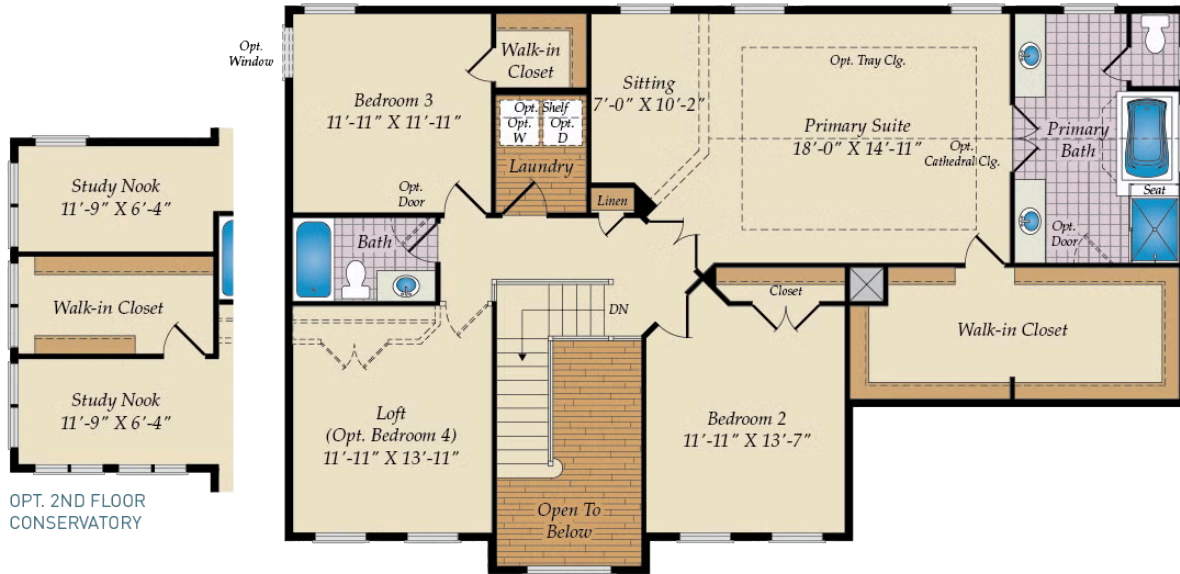
OPT. SINGLE AREAWAY



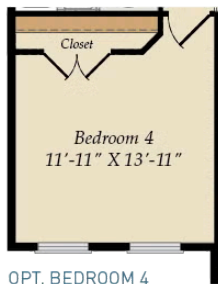
OPT. DOUBLE AREAWAY

Brick/stone fronts, chimneys, bay windows, keystones, exterior trim, garage doors, light fixtures, dormers, and gables shown on elevations are optional features. Actual product specifications may vary in dimension or detail from these drawings. This insert is for illustrative purposes only and is not part of the legal contract. All dimensions are approximate. Many available options are not shown.

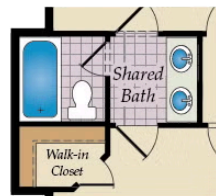
SECOND FLOOR



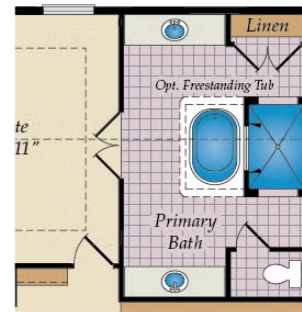
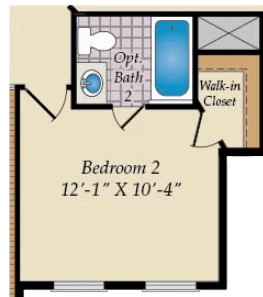
OPT. 2ND FLOOR CONSERVATORY



OPT. BEDROOM 4



OPT. SHARED BATH SHOWN WITH OPTIONAL BATH 2



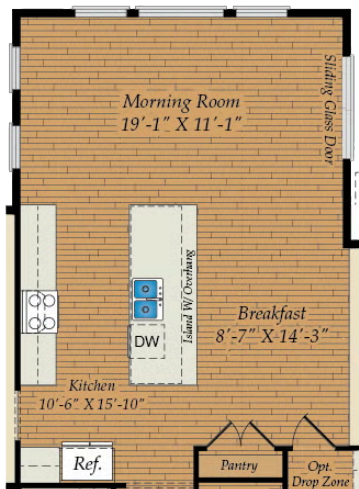
OPT. WALK-THRU SHOWER BATH

FIRST FLOOR

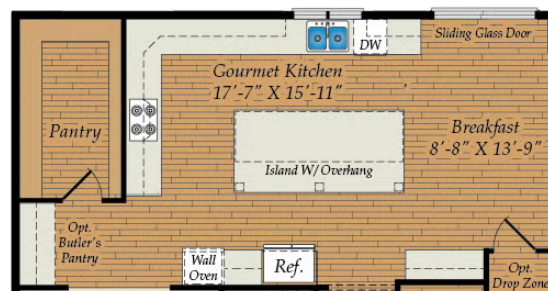


OPT. CONSERVATORY

OPT. 2-CAR SIDE LOAD GARAGE



OPT. MORNING ROOM



OPT. GOURMET KITCHEN