



Single Family

Priced From

**\$749,990**

**4 - 5 Beds**

**2.5 - 4.5 Baths**

**2,858 - 5,431 Sq Ft**

**COMMUNITY CONTACT**

14000 PECAN RIDGE WAY  
 BOWIE, MD 20715  
 (301) 517-7314  
 INFO@CARUSOHOMES.COM

The popular Emory II Craftsman plan is a single family home starting at 2,962 square feet, with options to expand up to 5,375 square feet of living space. The home has a two car garage and many elevations, including brick and stone combination fronts and craftsman styles. Inside, the home comes standard with 4 bedrooms and 2.5 baths with the option to add an additional bedroom and full bath in the basement. This dream home offers many upgrades such as a gourmet kitchen, stone or modern fireplace and a grand owner suite with optional spa bath. Choose from hundreds of features to personalize this home and make it your own. Total base square footage includes recreation room incentive.

## Available Elevations



Emory II Craftsman - Elevation 30 with Opt. Dormers

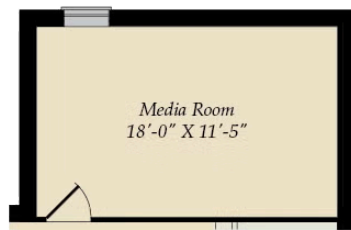


Emory II Craftsman - Elevation 32 with Opt. Dormer & Opt. Metal Roof for Front Porch and Gable Returns

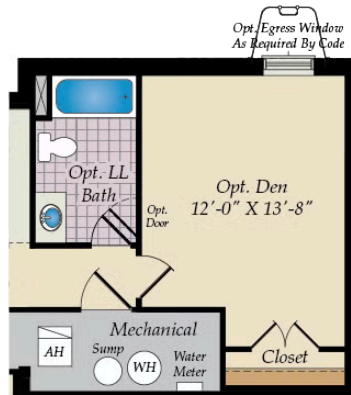


Emory II Craftsman - Elevation 50 with Opt. Dormer

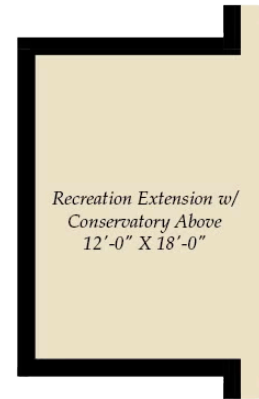
## BASEMENT



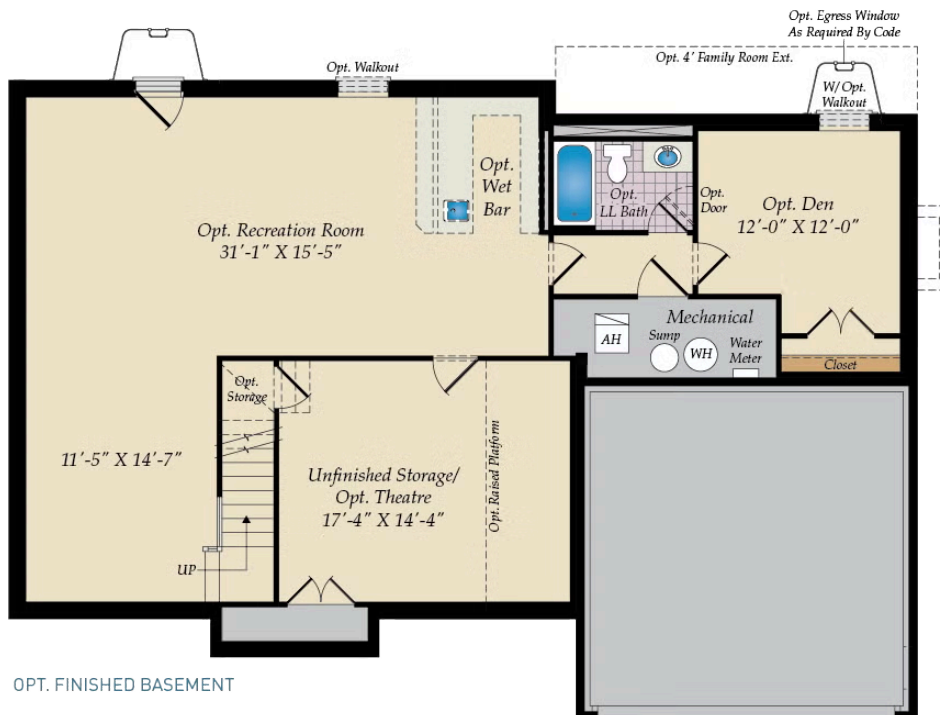
OPT.MEDIA ROOM W/MORNING ROOM  
ABOVE



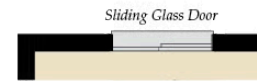
OPT.DEN EXTENSION W/GREAT ROOM  
EXT. ABOVE



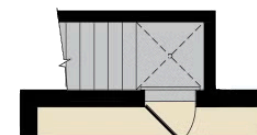
OPT. REC. EXTENSION W/  
CONSERVATORY ABOVE



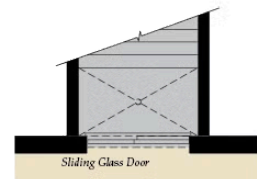
OPT. FINISHED BASEMENT



OPT. WALKOUT BASEMENT

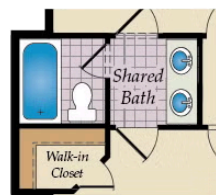
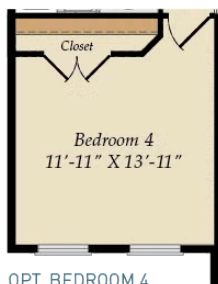
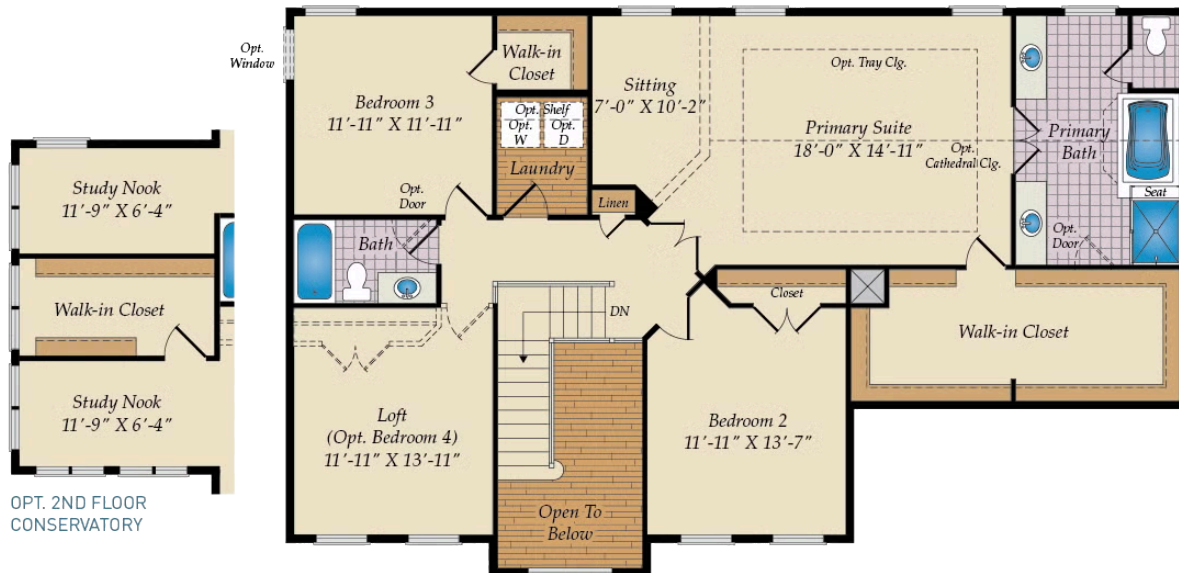


OPT. SINGLE AREAWAY

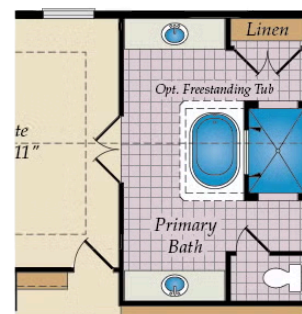
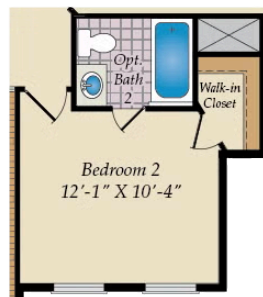


OPT. DOUBLE AREAWAY

## SECOND FLOOR

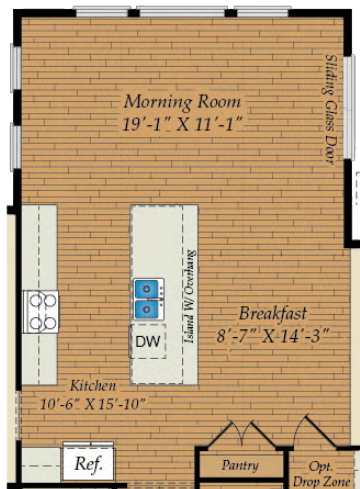


OPT. SHARED BATH  
SHOWN WITH OPTIONAL BATH 2

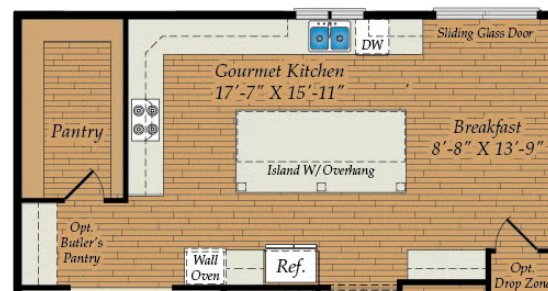


OPT. WALK-THRU  
SHOWER BATH

## FIRST FLOOR



**OPT. MORNING ROOM**



**OPT. GOURMET KITCHEN**