



**4 - 5 Beds**

**2.5 - 4 Baths**

**2,221 - 3,956 Sq Ft**

**COMMUNITY CONTACT**

14000 PECAN RIDGE WAY  
 BOWIE, MD 20715  
 (301) 517-7314  
 INFO@CARUSOHOMES.COM

The Deerfield is a four bedroom floor plan with the option to add an In-Law suite downstairs. Enjoy gathering with family and friends in this open concept home which features a large great room that flows right into the kitchen. A 9 foot island and plenty counter space will please the chef and a formal dining room is perfect for serving up family meals. Upstairs, the large owner's suite offers an ensuite bath with his and her walk-in closets. Three additional bedrooms, a hall bath and a convenient laundry room complete the second floor. An optional third floor provides a loft and full bath for additional living space. Plenty of options and upgrades are available to personalize this home and make it your own! Total base square footage includes recreation room incentive.

## Available Elevations



Elevation 1 - With Opt. Brick Water Table

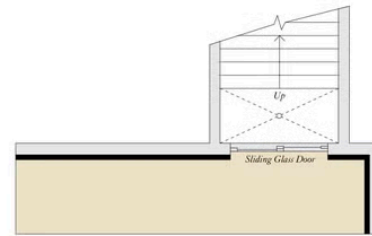
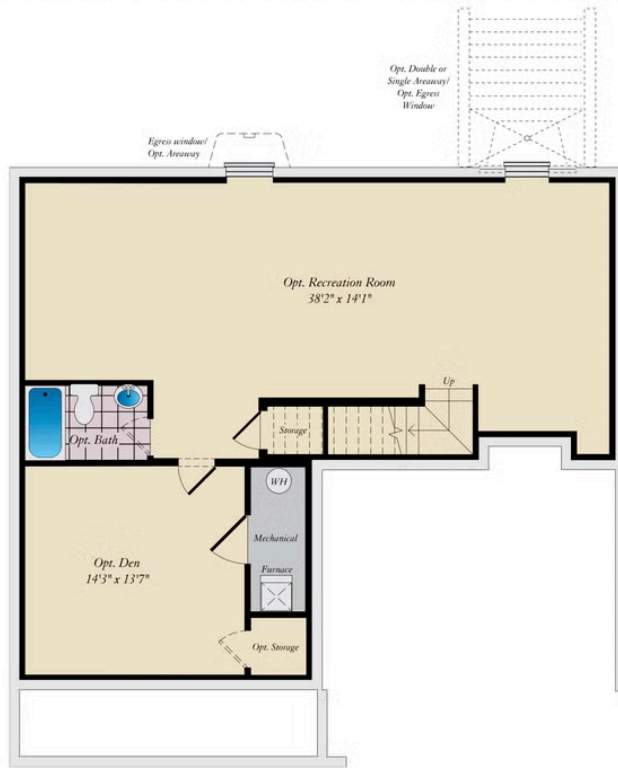


Deerfield Elevation 1 - With Opt. Full Brick



Elevation 2

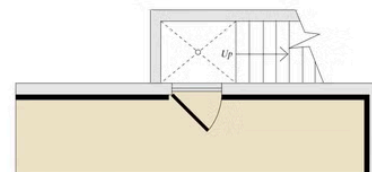
## BASEMENT AND OPTIONAL ATTIC



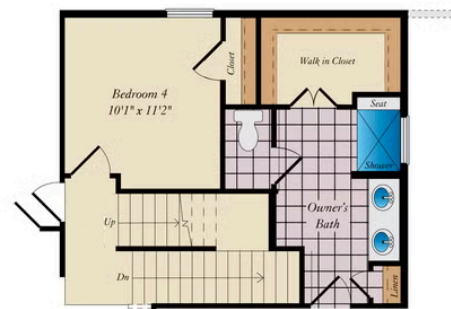
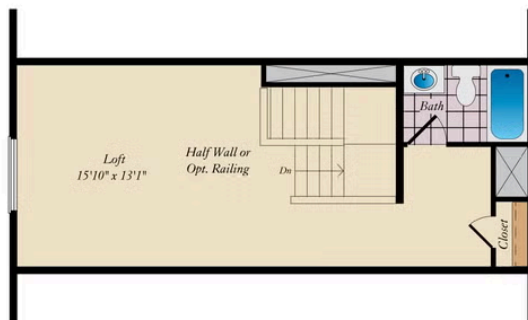
OPT. DOUBLE AREAWAY



OPT. WALKOUT

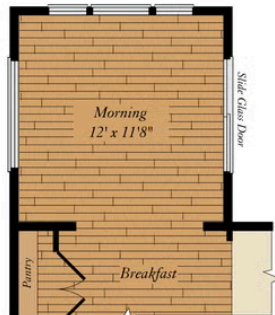


OPT. SINGLE AREAWAY

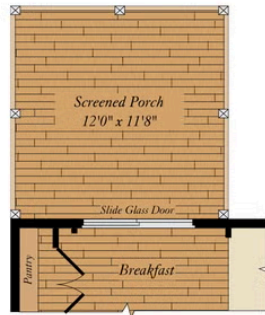


OPT. ATTIC STAIR

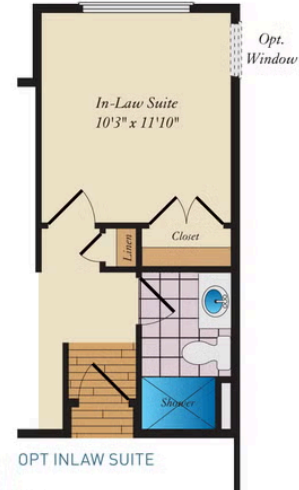
## FIRST FLOOR



OPT MORNING ROOM



OPT SCREENED PORCH



OPT INLAW SUITE



## SECOND FLOOR

