



**4 - 6 Beds**

**2.5 - 4.5 Baths**

**3,599 - 5,623 Sq Ft**

**COMMUNITY CONTACT**

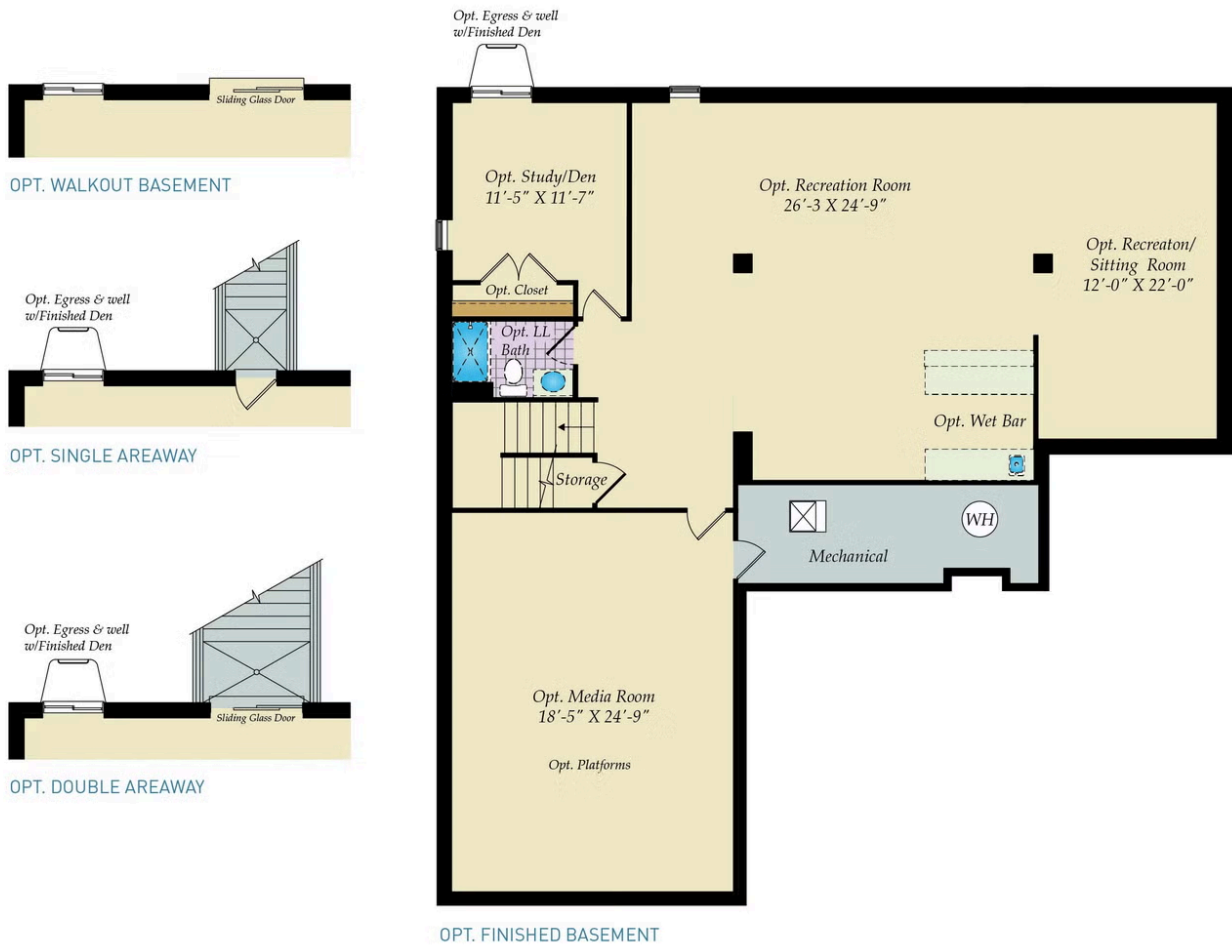
14000 PECAN RIDGE WAY  
BOWIE, MD 20715  
(301) 517-7314  
INFO@CARUSOHOMES.COM

The Colorado is a single family home starting at 3,599 square feet, with options to expand up to 5,623 square feet of living space. The home comes standard with a 2-car garage and several craftsman and traditional style elevations to choose from. The main level offers an open floorplan with a large family room that is open to an eat-in kitchen with a walk-in pantry and large central island, perfect for entertaining. Several flexible options allow buyers to design the space to fit their lifestyle with upgrades such as an office, an in-law suite and a screened porch. The second level offers 4 bedrooms, two full baths and a spacious loft area for additional living space. The basement can be finished to include a rec room, a media room, another bedroom and full bath. Select from hundreds of upgrades and finishes to make the Colorado your dream home. Total base square footage includes recreation room incentive.

## Available Elevations



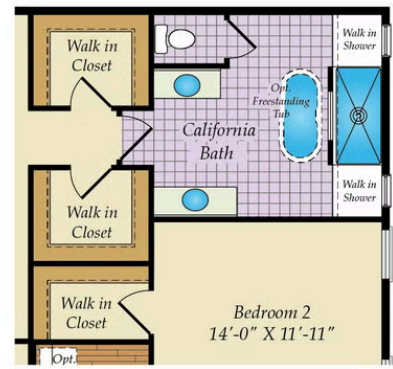
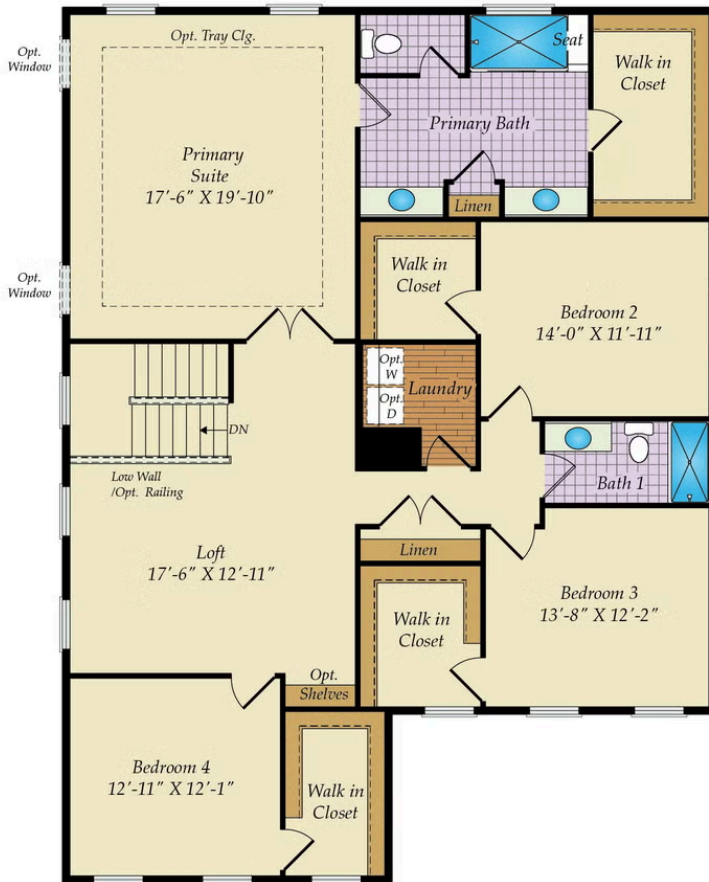
# BASEMENT



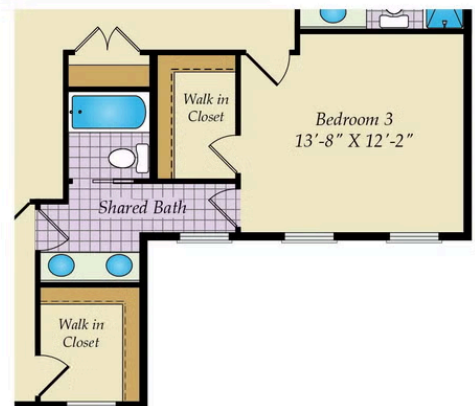
Brick/stone fronts, chimneys, bay windows, keystones, exterior trim, garage doors, light fixtures, dormers, and gables shown on elevations are optional features. Actual product specifications may vary in dimension or detail from these drawings. This insert is for illustrative purposes only and is not part of the legal contract. All dimensions are approximate. Many available options are not shown.



# SECOND FLOOR



OPT. CALIFORNIA BATH



OPT. SHARED BATH