



5 Beds

4.5 Baths

5338 Sq Ft

ADDRESS

3906 DIPLOMAT AVE - HOMESITE 60A
BOWIE, MD 20721

SALES CONTACT

301-517-7314
INFO@CARUSOHOMES.COM

UP TO \$37,500 IN CLOSING COSTS!*

Presenting Caruso Homes' #1 best-selling floor plan — the spectacular **Kingsport II** at Fairview Manor! After 40 years of building dreams, this home stands as a true testament to craftsmanship and comfort.

With its striking brick front and thoughtfully designed layout, the Kingsport II offers soaring 10' ceilings on the main level, a luxurious spa bath, and **three beautifully finished floors** ready to elevate your lifestyle. Step inside and prepare to be wowed by a wealth of upgrades:

- An **extended family room** with a dramatic **20' coffered ceiling** and (use warm or inviting) gas fireplace — perfect for unforgettable evenings
- A **spacious morning room** addition that seamlessly connects the kitchen and family room, creating an expansive, light-filled gathering space ideal for everyday living and entertaining
- A **deluxe gourmet kitchen** outfitted with upgraded stainless steel appliances and a generous island, ideal for culinary creativity and entertaining

The main level also features a convenient **in-law suite with a full bath**, offering privacy and flexibility. Upstairs, the **primary suite** is pure luxury, complete with an en-suite California bath and a spacious walk-in closet. Three additional bedrooms and two full bathrooms provide ...

FIRST FLOOR



OPT. SCREENED PORCH



OPT. MORNING ROOM
(Shown with Opt. Deluxe Kitchen)



OPT. IN-LAW SUITE



OPT. CONSERVATORY



Brick/stone fronts, chimneys, bay windows, keystones, exterior trim, garage doors, light fixtures, dormers, and gables shown on elevations are optional features. Actual product specifications may vary in dimension or detail from these drawings. This insert is for illustrative purposes only and is not part of the legal contract. All dimensions are approximate. Many available options are not shown.

SECOND FLOOR



OPT. BUDDY BATH



OPT. 3RD BATH



OPT. CALIFORNIA BATH



OPT. CONSERVATORY BELOW



OPT. CARIBBEAN BATH

Brick/stone fronts, chimneys, bay windows, keystones, exterior trim, garage doors, light fixtures, dormers, and gables shown on elevations are optional features. Actual product specifications may vary in dimension or detail from these drawings. This insert is for illustrative purposes only and is not part of the legal contract. All dimensions are approximate. Many available options are not shown.

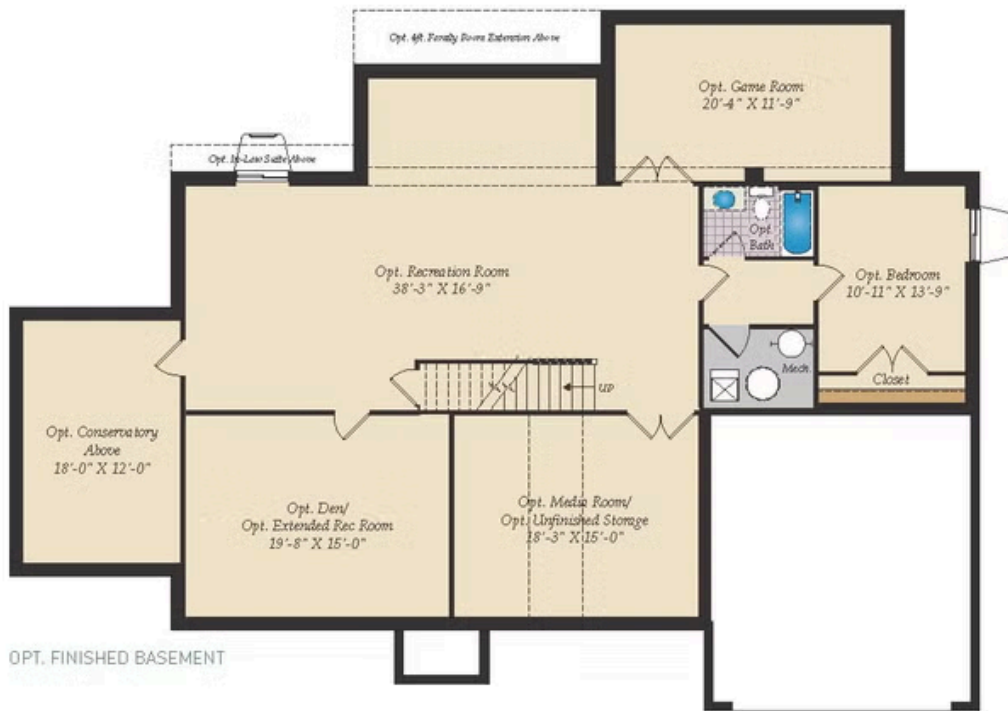
BASEMENT



OPT. SINGLE AREAWAY



OPT. DOUBLE AREAWAY



OPT. FINISHED BASEMENT

Brick/stone fronts, chimneys, bay windows, keystones, exterior trim, garage doors, light fixtures, dormers, and gables shown on elevations are optional features. Actual product specifications may vary in dimension or detail from these drawings. This insert is for illustrative purposes only and is not part of the legal contract. All dimensions are approximate. Many available options are not shown.