



3 - 4 Beds

2.5 - 4.5 Baths

2,395 - 3,314 Sq Ft

COMMUNITY CONTACT

16580 FIFE WAY (GPS: 1525 POINTER
 RIDGE PLACE)
 BOWIE, MD 20716
 301-517-7314
 NONE

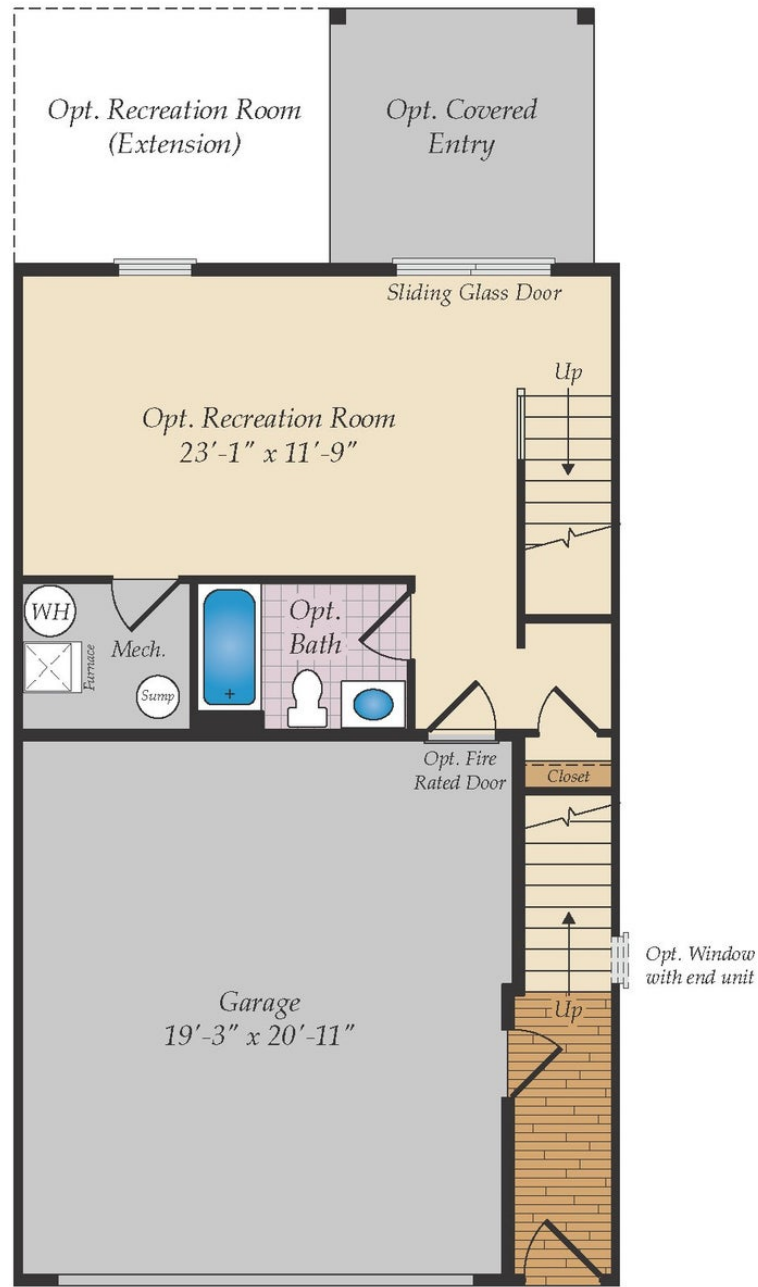
The Patuxent at Amber Ridge is a two-car garage townhome with a modern open floor plan and up to 3,467 square feet of living space. The front load plan comes standard with 3 bedrooms and 2.5 baths. The garage level includes the finished rec room and a 3-piece rough in for a future bath. The main level features a central kitchen with a huge center island that is open to the dining room and great room. Upgrade this space by adding a fireplace in the great room, a covered deck and even a sunroom! Upstairs, the Owner's Suite offers an ensuite bath and walk-in closet. There are options to add a second walk-in closet, a spa bath and a vaulted ceiling. Two additional bedrooms, a hall bath and laundry room complete this level. Need more space? A fourth level can be added with a loft, rooftop terrace and an extra bedroom and full bath. Choose from a variety of luxury finishes to personalize the home and make it your own!

The Patuxent is our newest townhome plan and a model is currently under construction. Photos of a similar townhome are shown for representation only.

Available Elevations

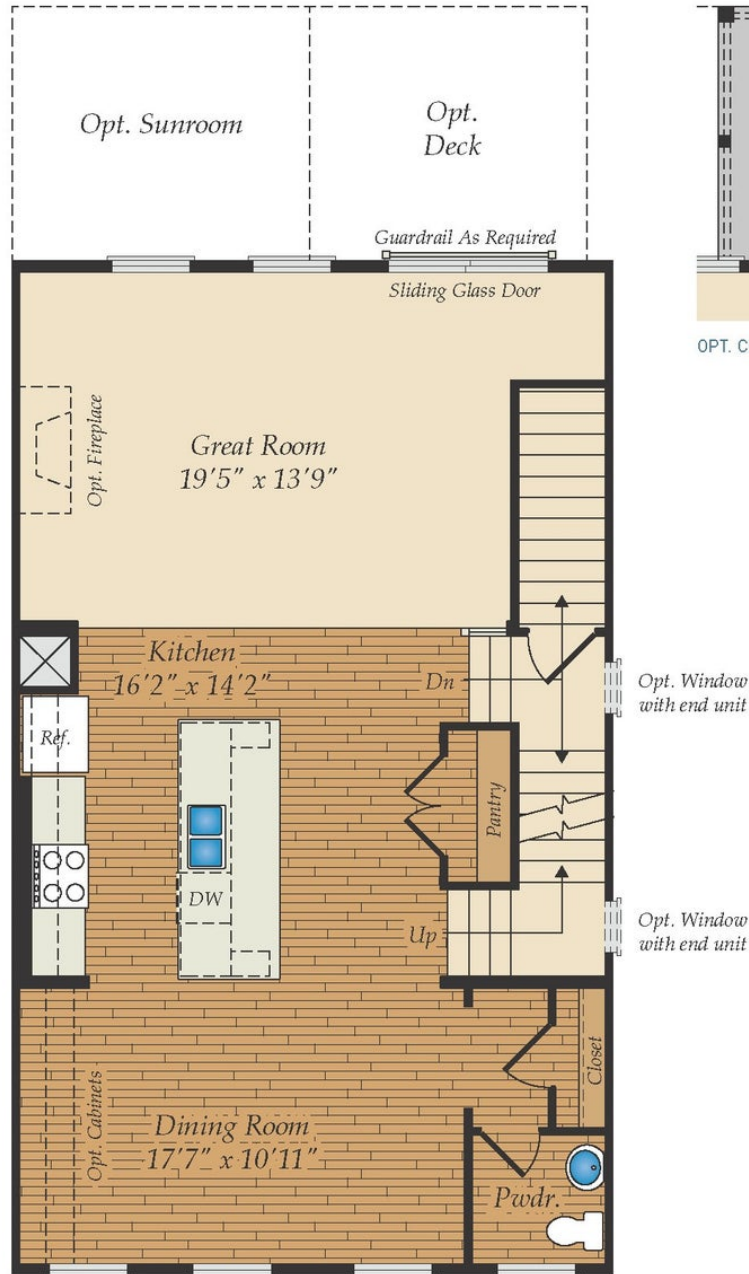


LOWER LEVEL

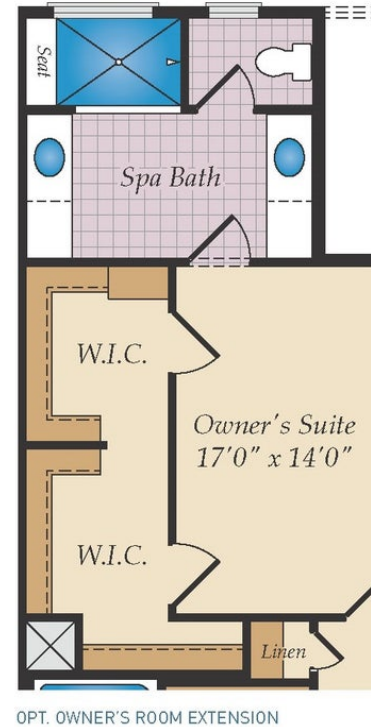
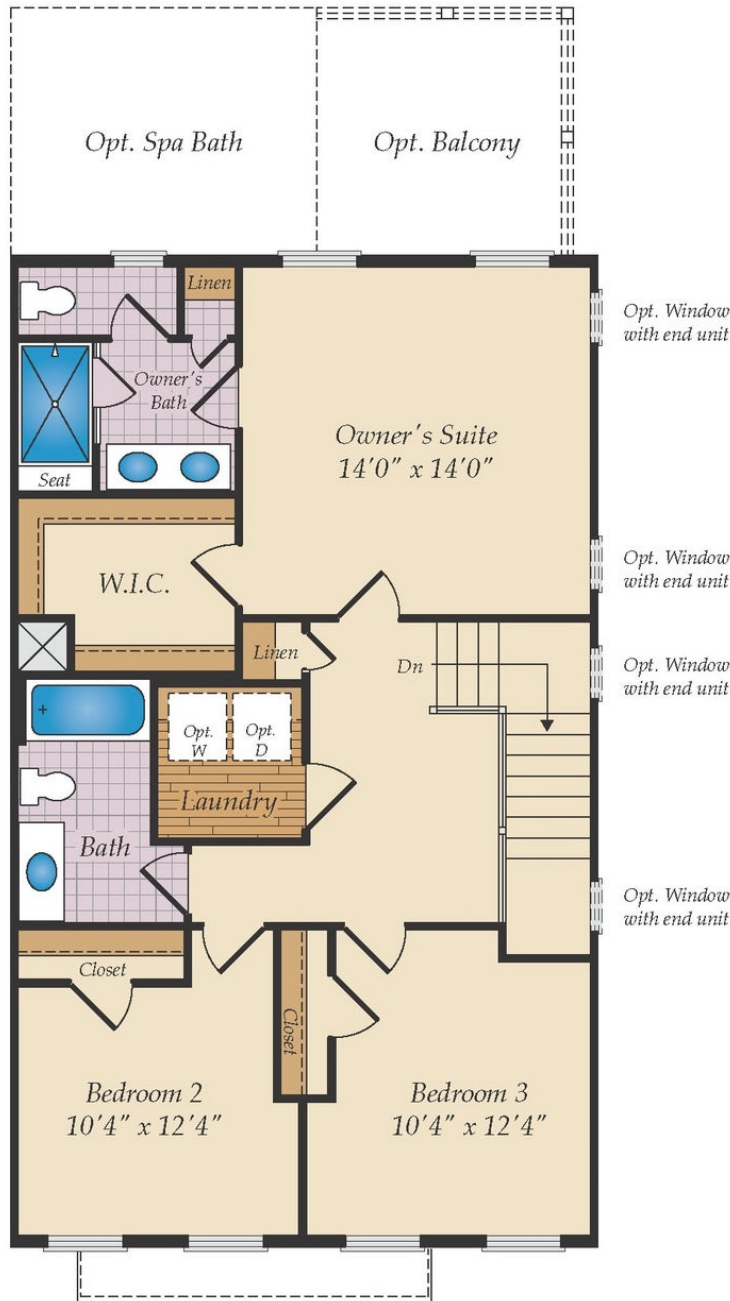


OPT. FINISHED LOWER LEVEL

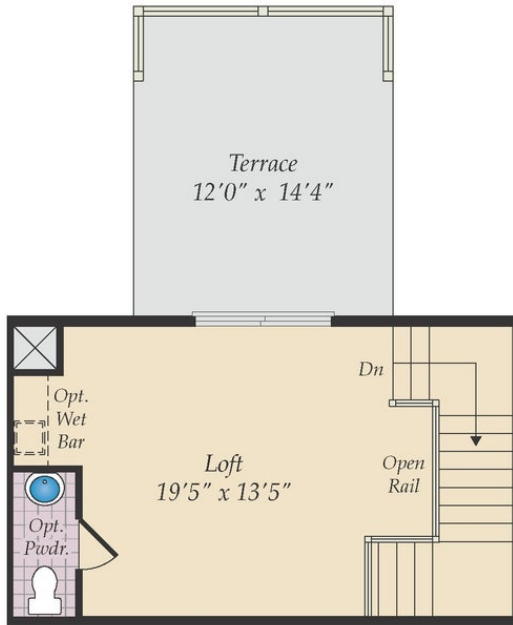
FIRST FLOOR



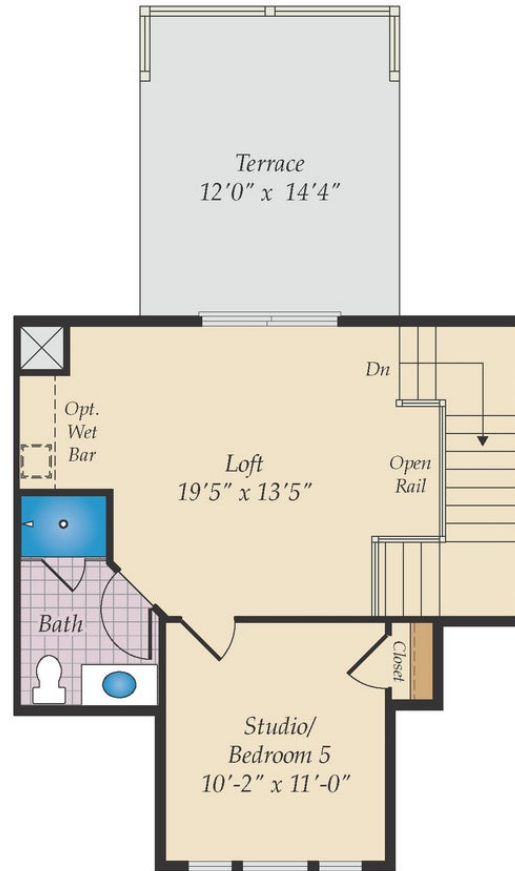
SECOND FLOOR



OPTIONAL THIRD LEVEL

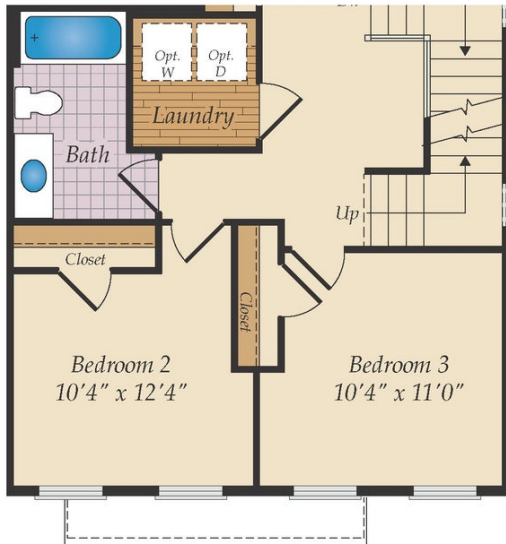


OPT. FINISHED LOFT

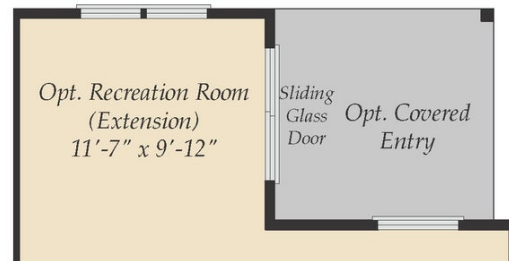


OPT. LOFT SUITE

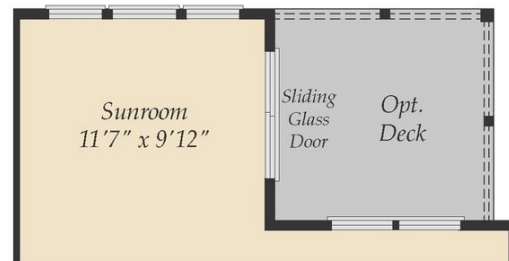
OTHER OPTIONS



SECOND FLOOR PLAN W/ OPT. THIRD LEVEL



OPT. BASEMENT EXTENSION



OPT. SUNROOM IN THE FIRST FLOOR PLAN



OPT. OWNER'S BALCONY