



4 - 5 Beds

2.5 - 4.5 Baths

2,858 - 5,431 Sq Ft

COMMUNITY CONTACT

15900 VENICE ROAD
 AQUASCO, MD 20608
 NONE
 NONE

The popular Emory II plan is a single family home starting at 2,858 square feet, with options to expand up to 5,431 square feet of living space. The home has a two car garage and many elevations, including brick and stone combination fronts and craftsman styles. Inside, the home comes standard with 4 bedrooms and 2.5 baths with the option to add an additional bedroom and full bath in the basement. This dream home offers many upgrades such as a gourmet kitchen, stone or modern fireplace and a grand owner suite with optional spa bath. Choose from hundreds of features to personalize this home and make it your own.

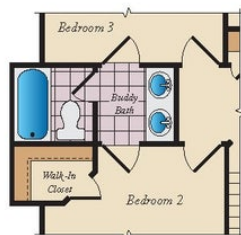
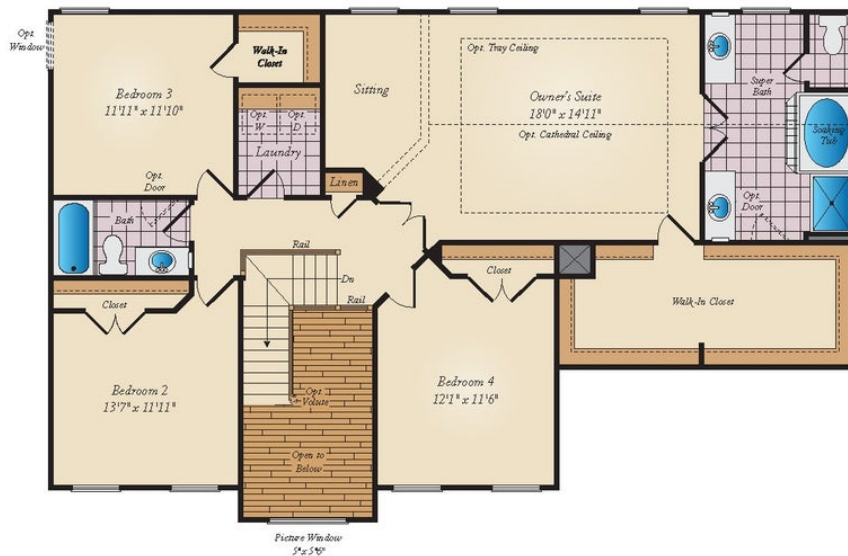
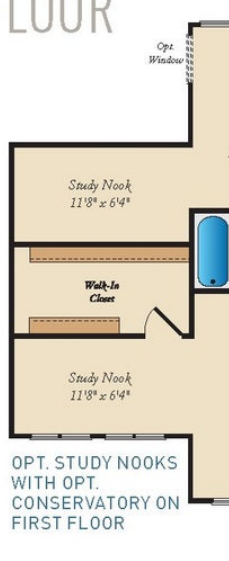
Available Elevations



FIRST FLOOR



SECOND FLOOR



BASEMENT

