



3 - 5 Beds

2.5 - 3 Baths

2,506 - 3,013 Sq Ft

COMMUNITY CONTACT

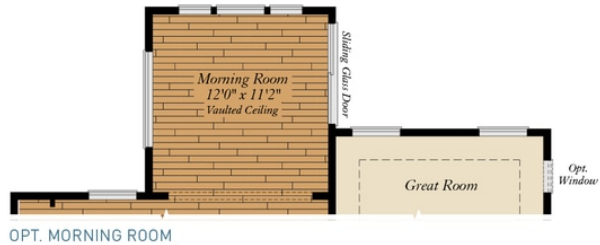
16622 TORTOLA DRIVE
 ACCOKEEK, MD 20607
 301-517-7314
 INFO@CARUSOHOMES.COM

The Stanford plan is a single family home starting at 1,859 square feet, with options for up to 3,013 square feet of living space. The home has a two car garage and several elevations to choose from including some with a covered front porch. Inside the home comes standard with 3 bedrooms and 2.5 baths with the option to add an additional bedroom over the garage or in the basement. Many available options and finishes allow you to personalize this home to make it your own.

Available Elevations



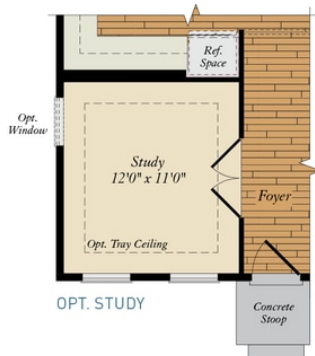
FIRST FLOOR



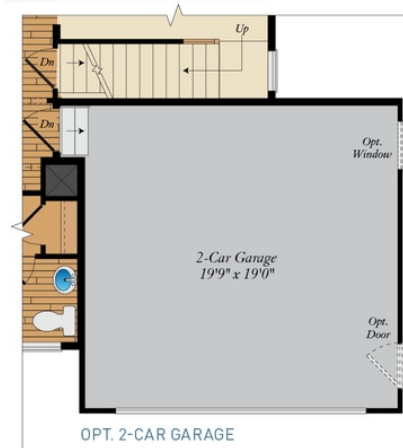
OPT. MORNING ROOM



OPT. GOURMET KITCHEN



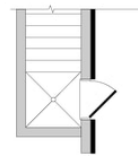
OPT. STUDY



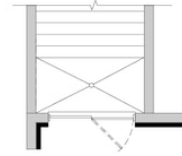
OPT. 2-CAR GARAGE

SECOND FLOOR



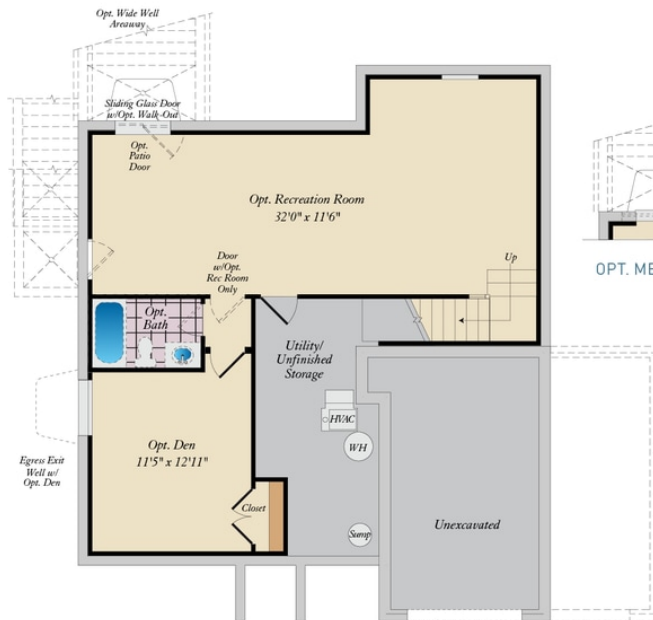


OPT. SIDE AREAWAY

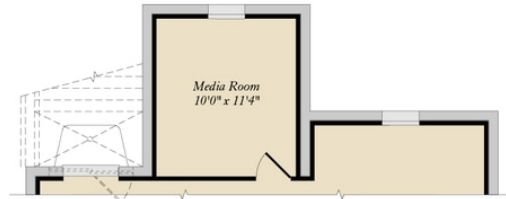


OPT. WIDE-WELL AREAWAY

BASEMENT



OPT. WALK-OUT



OPT. MEDIA ROOM W/ OPT. MORNING ROOM ON FIRST FLOOR