



4 - 5 Beds

2.5 - 4 Baths

2,501 - 3,460 Sq Ft

COMMUNITY CONTACT

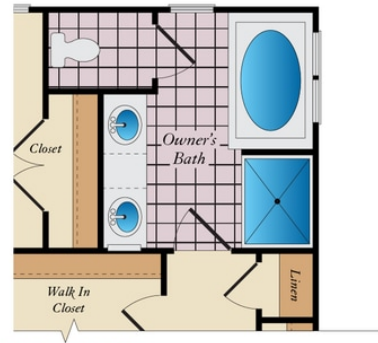
16622 TORTOLA DRIVE
 ACCOKEEK, MD 20607
 301-517-7314
INFO@CARUSOHOMES.COM

The Michigan plan is a single family home starting at 2,193 square feet, with options for up to 3,460 square feet of living space. The home has a two car garage and several elevations to choose from including several with a covered front porch. Inside the home comes standard with 4 bedrooms and 2.5 baths with the options for up to 5 bedrooms and 4 baths. Your dream home is ready to be designed by you. Select from hundreds of options and features such as a gourmet kitchen, stone or modern fireplaces, in-law suite and basements made for entertaining with a recreation room, theater room, and much more!

Available Elevations



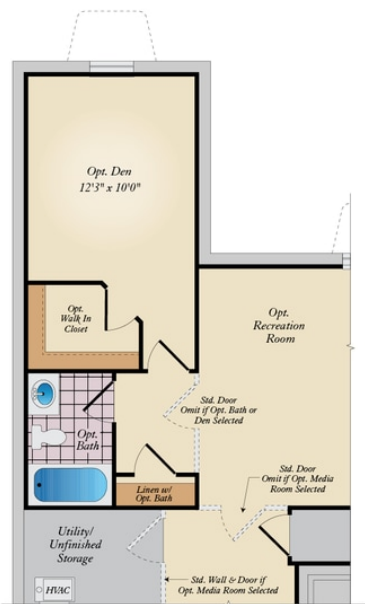
SECOND FLOOR



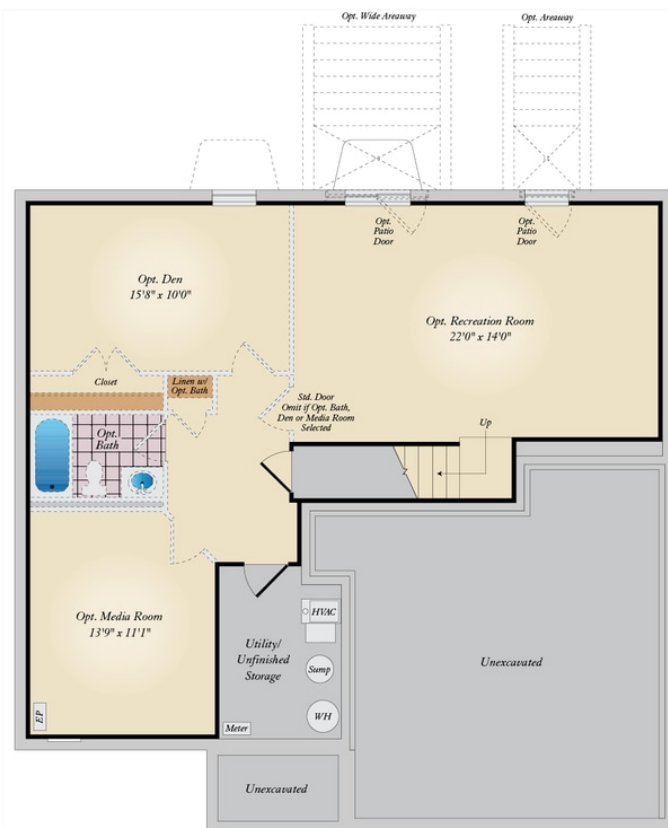
OPT. SUPER BATH



BASEMENT



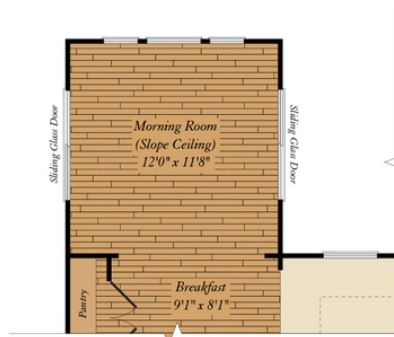
OPT. DEN WITH OPT. MORNING ROOM
ON FIRST FLOOR



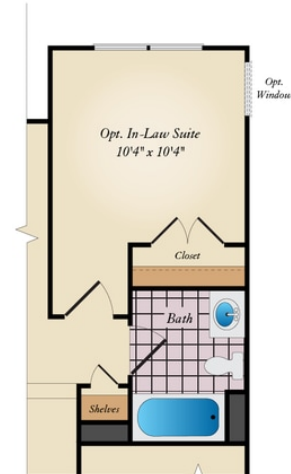
FIRST FLOOR



OPT. GOURMET KITCHEN



OPT. MORNING ROOM



OPT. IN-LAW SUITE