



Single Family

Priced From

\$564,990

4 - 5 Beds

2.5 - 3.5 Baths

2,405 - 2,988 Sq Ft

COMMUNITY CONTACT

16622 TORTOLA DRIVE

ACCOKEEK, MD 20607

301-517-7314

INFO@CARUSOHOMES.COM

The Dartmouth plan is a single family home starting at 2,176 square feet, with options for up to 2,988 square feet of living space. The home has a two car garage and several elevations to choose from including several with a covered front porch. Inside the home comes standard with 4 bedrooms and 2.5 baths with the option to add an additional bedroom and full bath in the basement. Many available options and finishes allow you to personalize this home to make it your own.

Available Elevations



Elevation 1

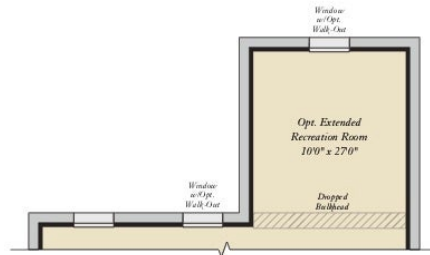


Elevation 2

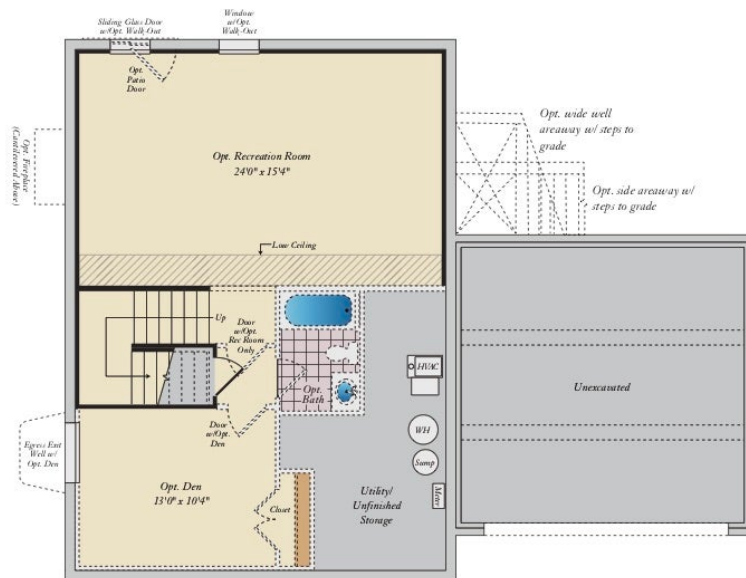


Elevation 3

BASEMENT



OPT. EXTENDED RECREATION ROOM W/ OPT. MORNING ROOM ON FIRST FLOOR



USE OUR INTERACTIVE FLOOR PLAN TOOL TO DESIGN YOUR NEW HOME.

Visit Caruso Homes Interactive Floor Plans tool to personalize this floor plan into your dream home. Select from hundreds of available options and modify rooms. Then save your designs for future reference or sharing. Additional photos and virtual tours are also available for viewing on our website.

SECOND FLOOR



FIRST FLOOR

