

3 - 4 Beds

2.5 - 4.5 Baths

1,982 - 3,314 Sq Ft

COMMUNITY CONTACT

16629 ARUBA DRIVE (GPS: INTERSECTION
 OF MANNING ROAD AND CARIBBEAN
 WAY)

ACCOKEEK, MD 20607

(301) 517-7314

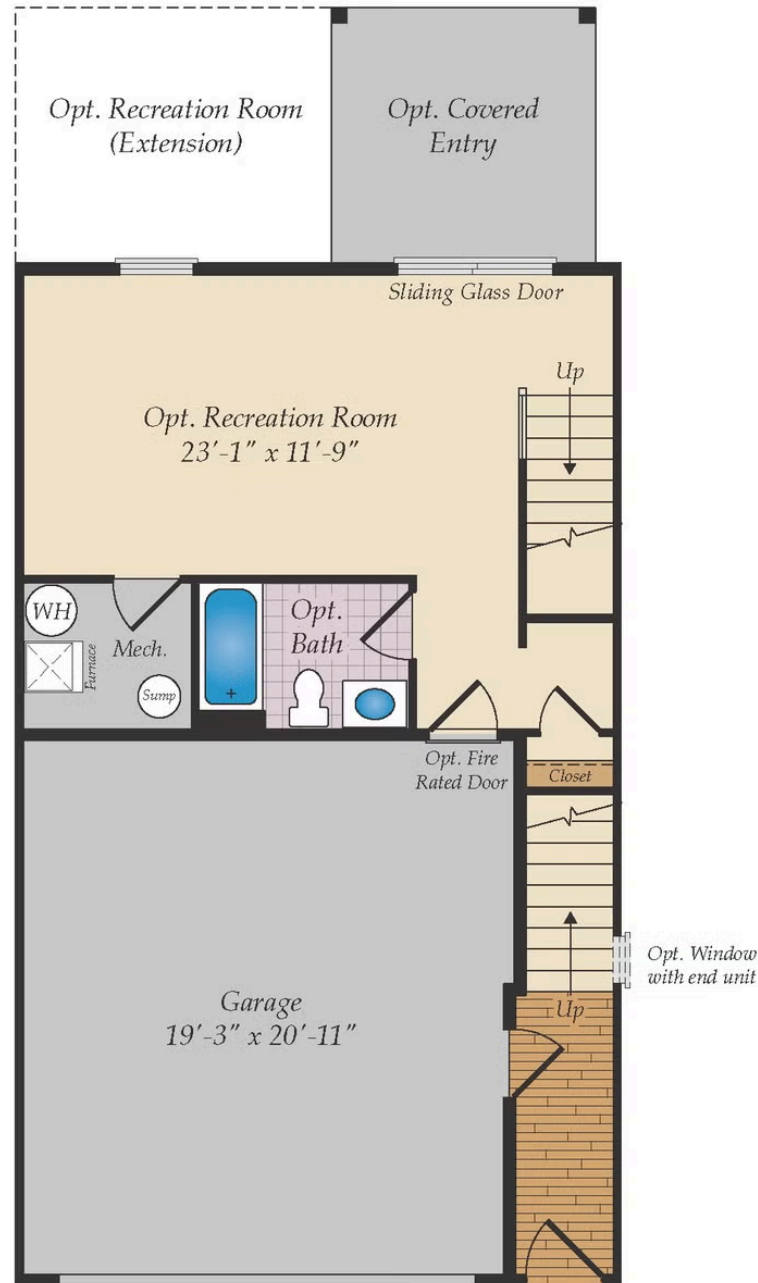
INFO@CARUSOHOMES.COM

The Patuxent is a two-car garage townhome with a modern open floor plan and up to 3,314 square feet of living space. The front load plan comes standard with 3 bedrooms and 2.5 baths. The garage level has additional space that can be used as unfinished storage or can be finished with a rec room and full bath. The main level features a central kitchen with a huge center island that is open to the dining room and great room. Upgrade this space by adding a fireplace in the great room, a covered deck and even a sunroom! Upstairs, the Owner's Suite offers an ensuite bath and walk-in closet. There are options to add a second walk-in closet, a spa bath and a vaulted ceiling. Two additional bedrooms, a hall bath and laundry room complete this level. Choose from a variety of luxury finishes to personalize the home and make it your own!

Available Elevations

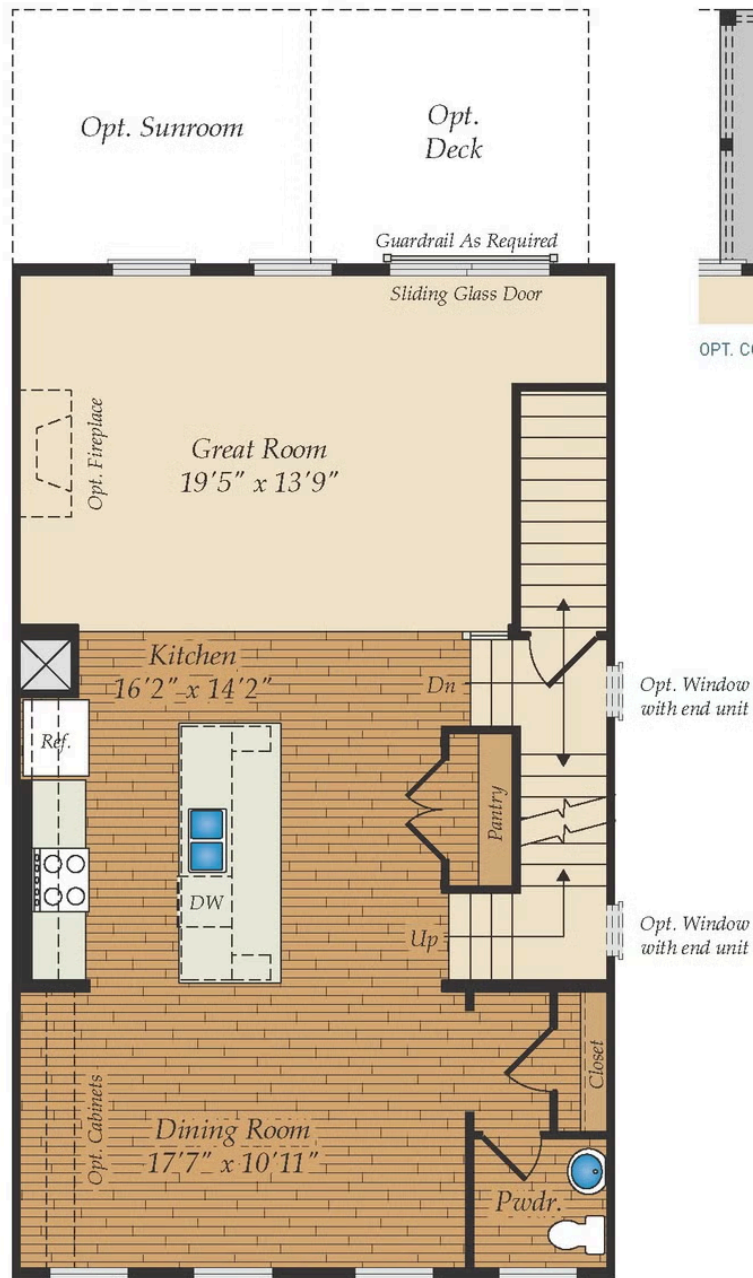


LOWER LEVEL

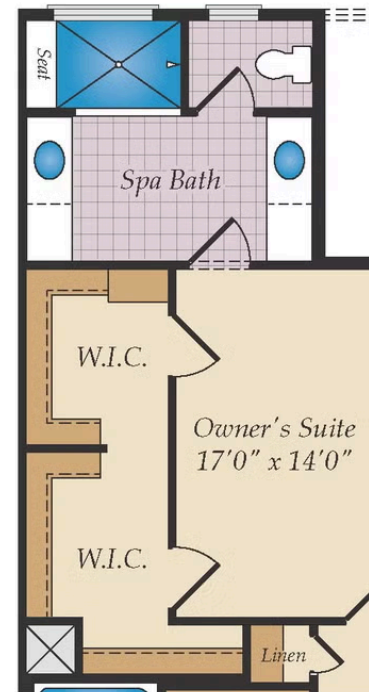
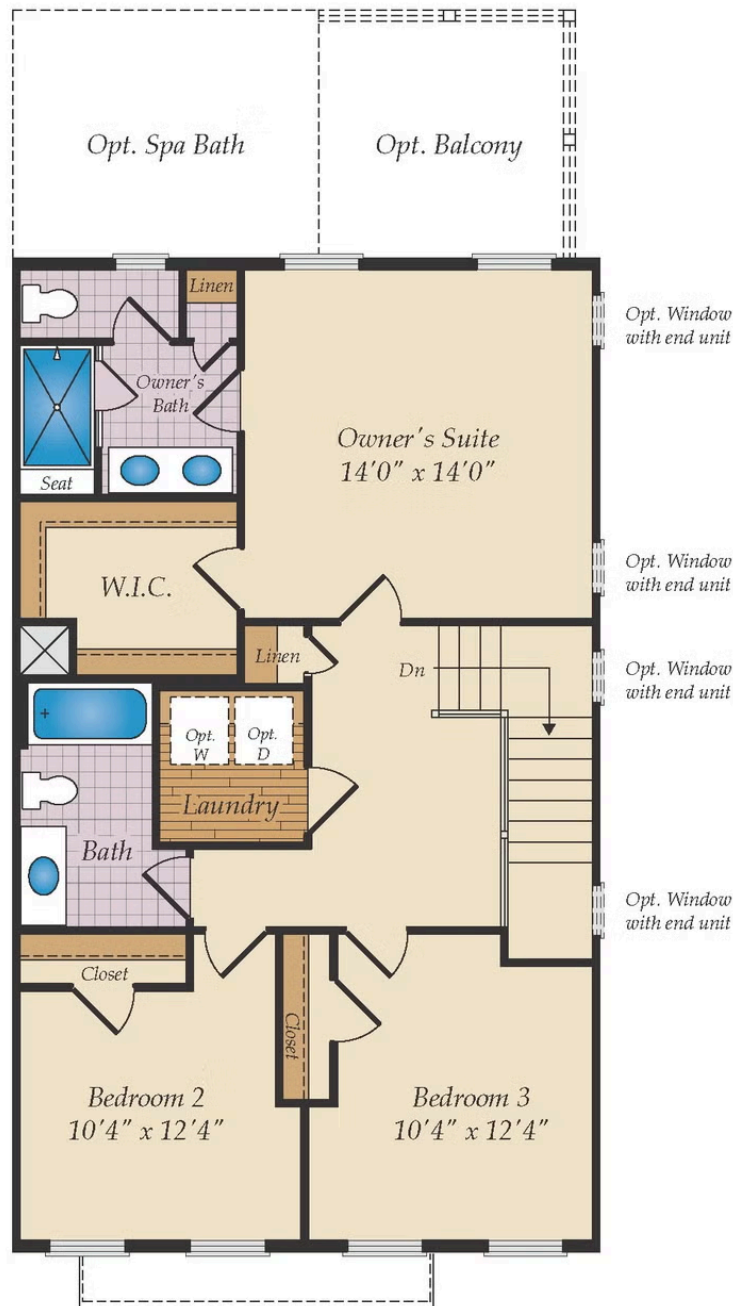


OPT. FINISHED LOWER LEVEL

FIRST FLOOR



SECOND FLOOR



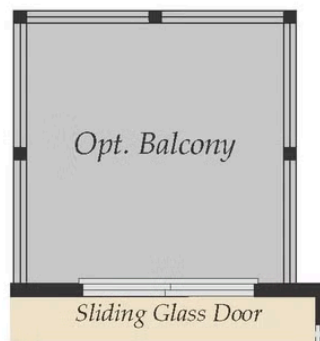
OPT. OWNER'S ROOM EXTENSION



OPT. BASEMENT EXTENSION



OPT. SUNROOM IN THE FIRST FLOOR PLAN



OPT. OWNER'S BALCONY