



4 Beds

2 Baths

1,600 Sq Ft

The Triumph floor plan is part of our Reward Series, which offers complete packages to provide value, convenience, and a streamlined purchase process for savvy homebuyers.

The Triumph is the perfect ranch-style home for those who desire one-level living, yet still want space for the entire family. With four bedrooms and an open living area, the layout of this home takes advantage of every inch of living space. The center of the home is a large island in the kitchen, perfect for gathering and entertaining. A two-car garage is included plus many more standard features.

Available Elevations



Triumph - Elevation 30

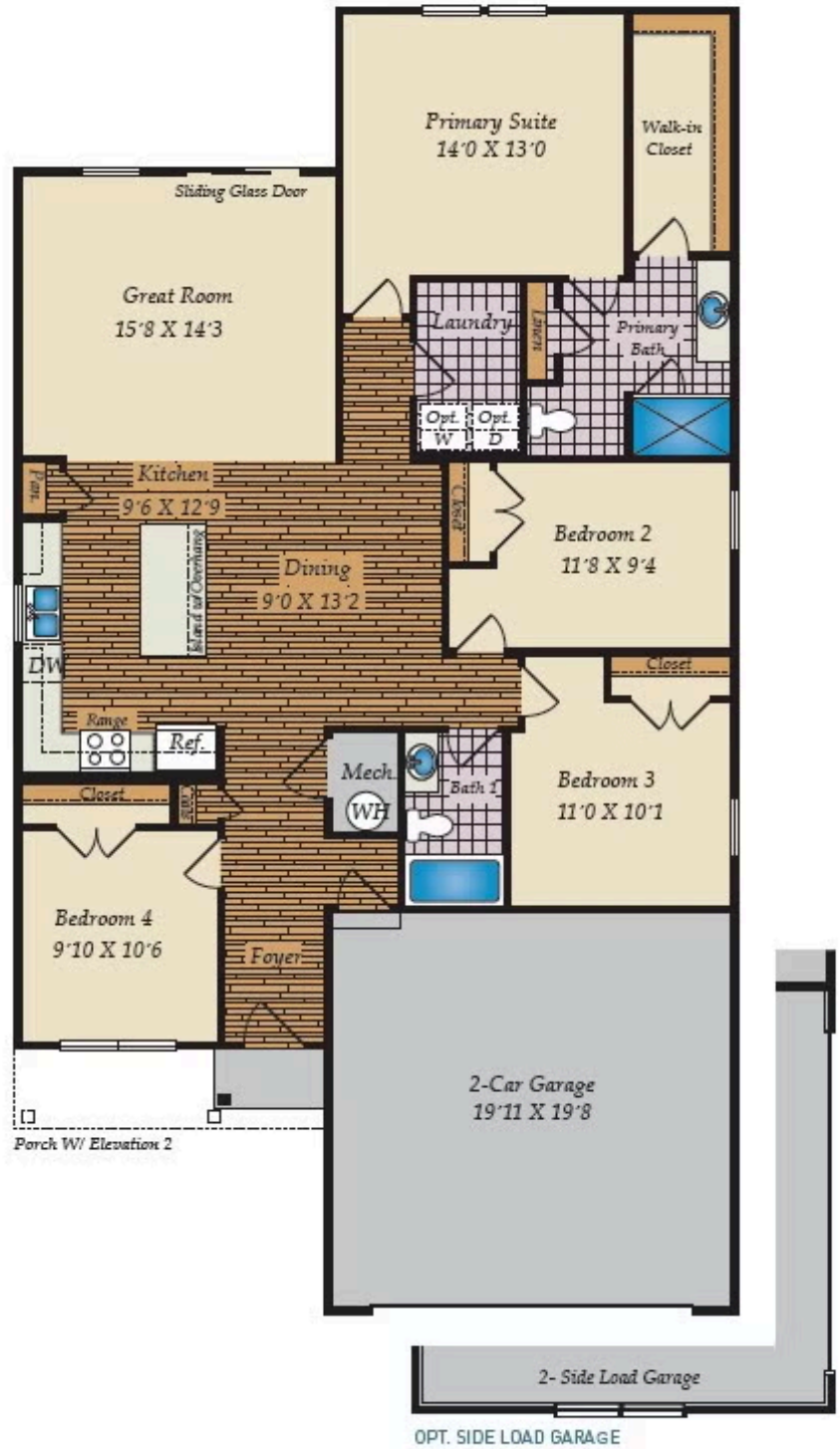


Triumph - Elevation 50 with Front Load Garage and Opt. Trellis



Triumph - Elevation 50 with Side Load Garage

FIRST FLOOR



Brick/stone fronts, chimneys, bay windows, keystones, exterior trim, garage doors, light fixtures, dormers, and gables shown on elevations are optional features. Actual product specifications may vary in dimension or detail from these drawings. This insert is for illustrative purposes only and is not part of the legal contract. All dimensions are approximate. Many available options are not shown.