



3 - 4 Beds

2.5 - 4 Baths

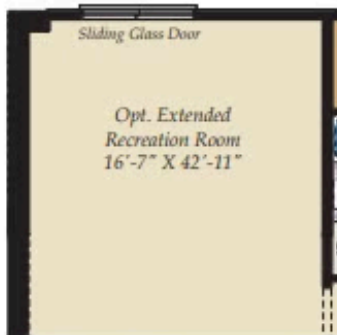
1,967 - 2,863 Sq Ft

Spacious ranch style home with optional finished upstairs bonus room. This home presents the perfect open floor plan for hosting family gatherings or events. You can also enjoy the privacy of setting outside on your large 10x16 ft patio or screen porch. This is a perfect home for first time home buyers as well as people looking to downsize. Some photos have been virtually staged to better showcase the true potential of rooms and spaces in the home.

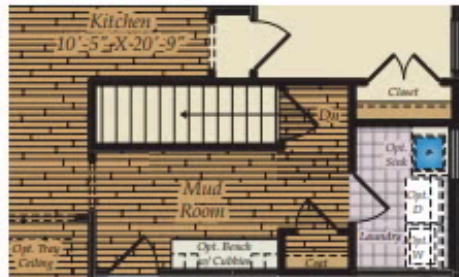
Available Elevations



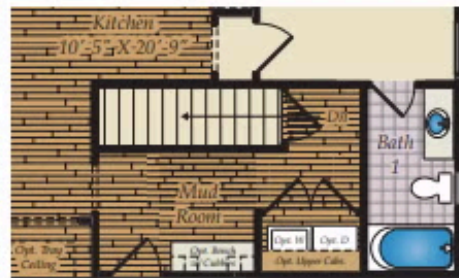
OPT. BASEMENT



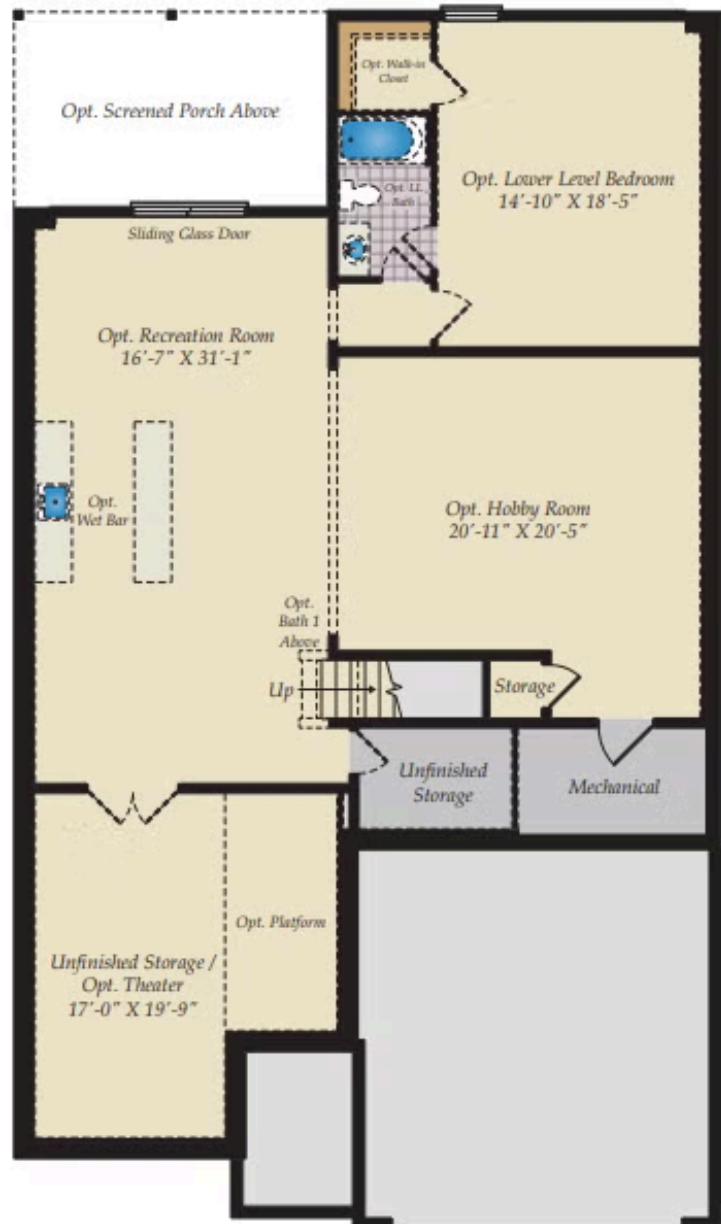
OPT. EXTENDED RECREATION ROOM



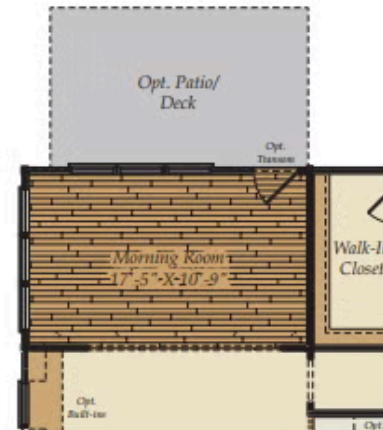
OPT. BASEMENT STAIRS



OPT. BATH 1 W/ OPT. BASEMENT



FIRST FLOOR



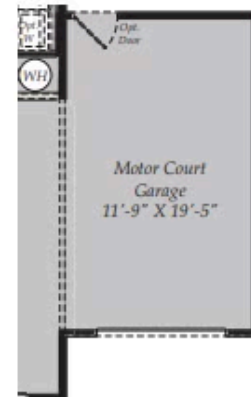
OPT. MORNING ROOM



OPT. DELUXE PRIMARY BATH



OPT. BATH 1

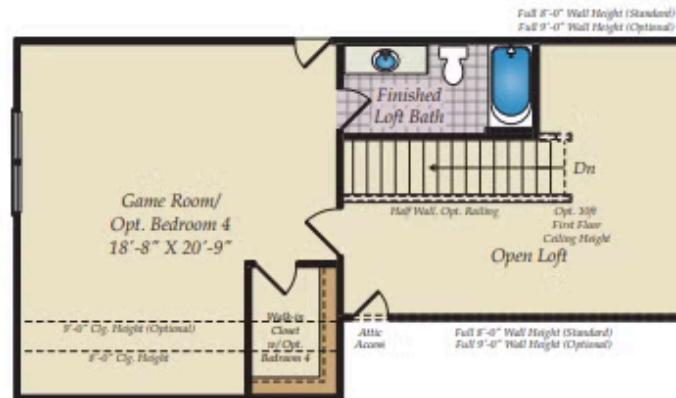


OPT. MOTOR COURT GARAGE

Brick/stone fronts, chimneys, bay windows, keystones, exterior trim, garage doors, light fixtures, dormers, and gables shown on elevations are optional features. Actual product specifications may vary in dimension or detail from these drawings. This insert is for illustrative purposes only and is not part of the legal contract. All dimensions are approximate. Many available options are not shown.



OPT. SECOND FLOOR & OPTIONS



OPT. SECOND FLOOR



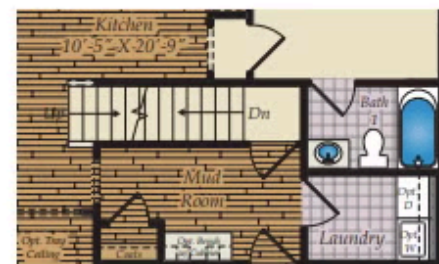
OPT. SECOND FLOOR STAIRS



OPT. BATH 1 W/OPT. SECOND FLOOR



OPT. BASEMENT AND OPT. SECOND FLOOR STAIRS



OPT. BATH 1 W/ OPT. BASEMENT AND SECOND FLOOR.

Brick/stone fronts, chimneys, bay windows, keystones, exterior trim, garage doors, light fixtures, dormers, and gables shown on elevations are optional features. Actual product specifications may vary in dimension or detail from these drawings. This insert is for illustrative purposes only and is not part of the legal contract. All dimensions are approximate. Many available options are not shown.

