



**4 Beds**

**2.5 - 3.5 Baths**

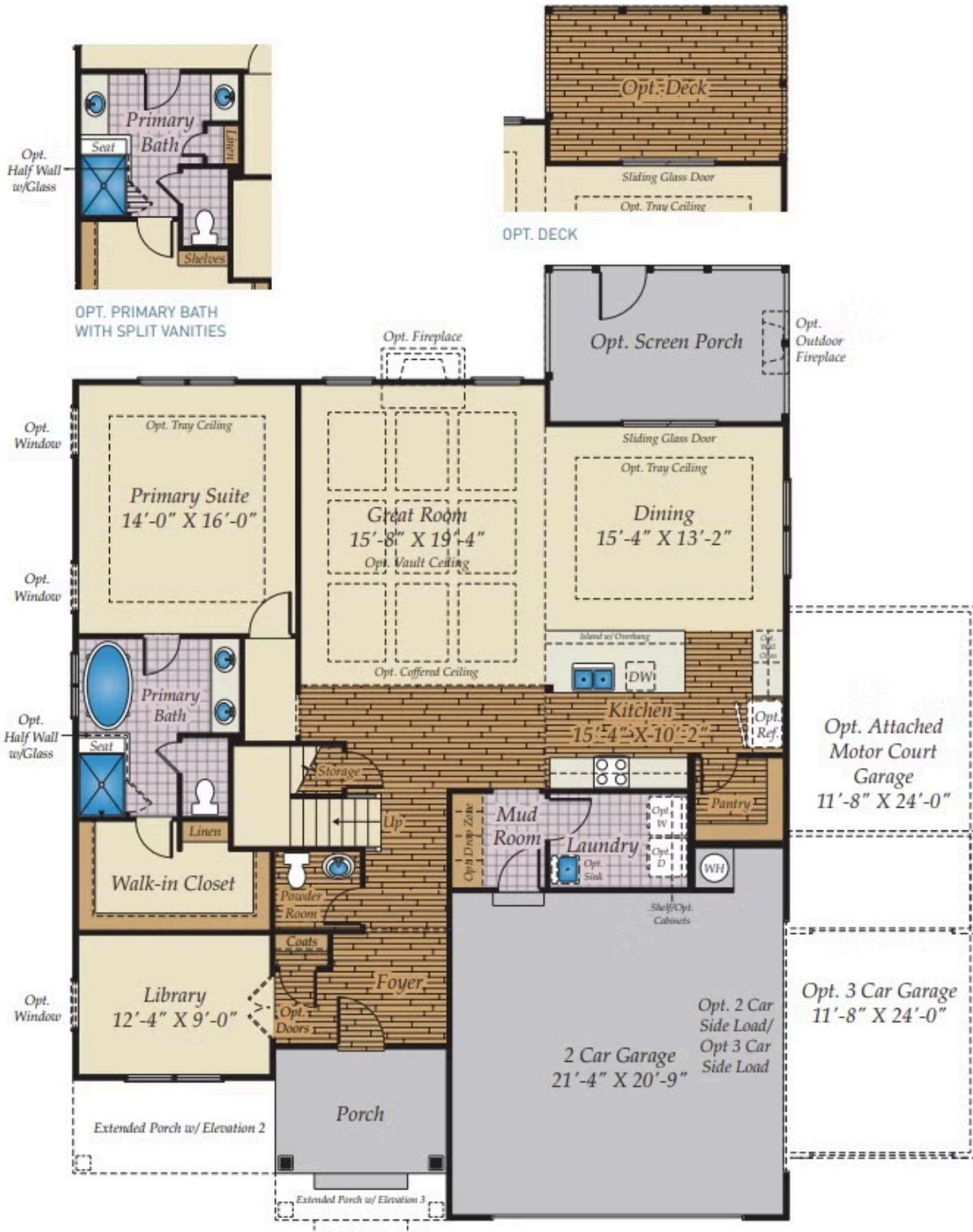
**2,684 - 2,924 Sq Ft**

The large front porch welcomes you into a spacious foyer and private study. The family room, with an optional vaulted ceiling and fireplace, flows seamlessly into the dining area and kitchen. The kitchen features a generous island, stylish backsplash, and a walk-in pantry, with the option to upgrade to a gourmet layout. On the first floor, you'll find a convenient laundry room and the owner's suite, complete with a walk-in closet and a luxurious bath. The primary bath includes split vanities, a walk-in shower and an optional layout offers a freestanding tub for added elegance. Upstairs, discover additional bedrooms, an open loft, a full bath, and generously sized attic storage, with options for a game room or an extra bath.

## Available Elevations



# FIRST FLOOR



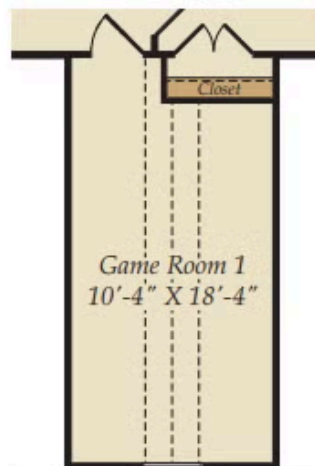
## SECOND FLOOR



OPT. BATH 2 FOR THE BEDROOM 2



OPT. BONUS ROOM



OPT. FIN. BONUS ROOM



## OPTIONAL BASEMENT

