



4 Beds

2.5 - 3.5 Baths

1,780 - 2,416 Sq Ft

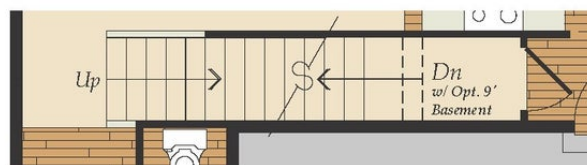
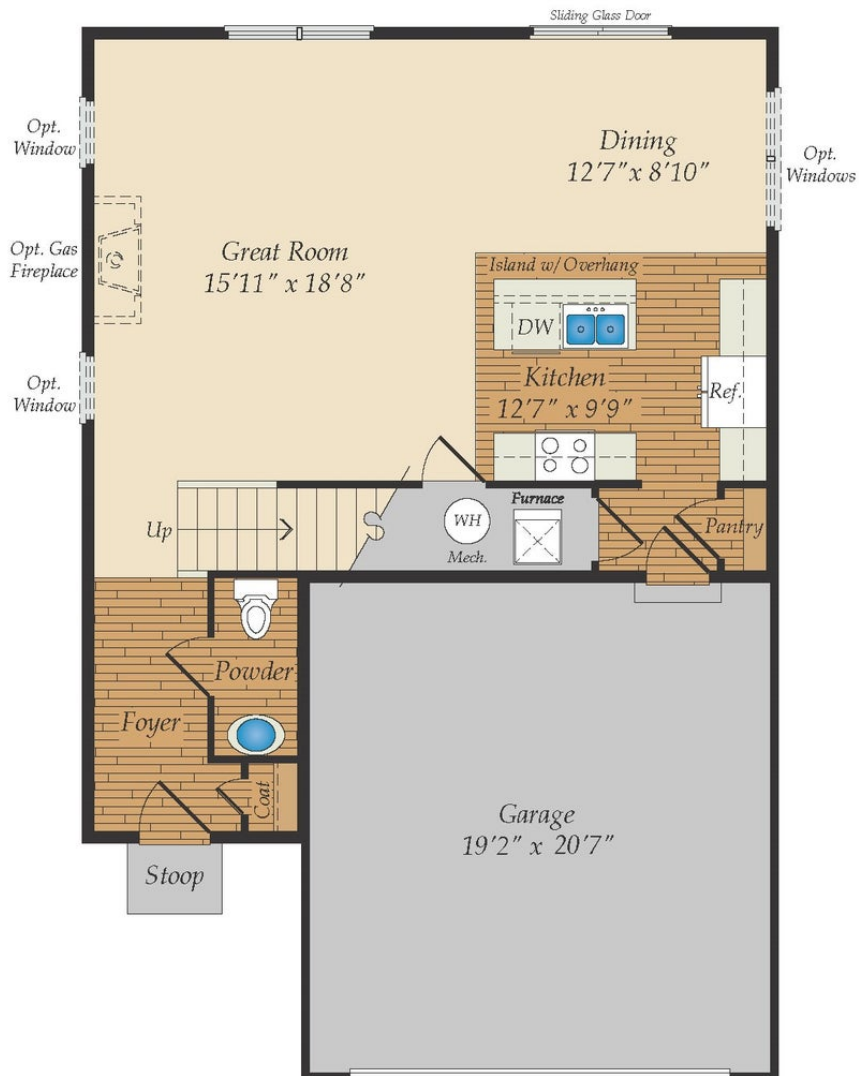
Maximize your living space with the Pocomoke. This 4 bedroom, 2 1/2 bath home features an open main level where the kitchen, dining area and great room create one large gathering space. The master bedroom and three additional bedrooms are on the second floor along with a convenient laundry room. Choose to finish the optional basement to create a large rec room, perfect for entertaining.

The Pocomoke is one of our newest floor plans. Photos of similar models used for representation only.

Available Elevations

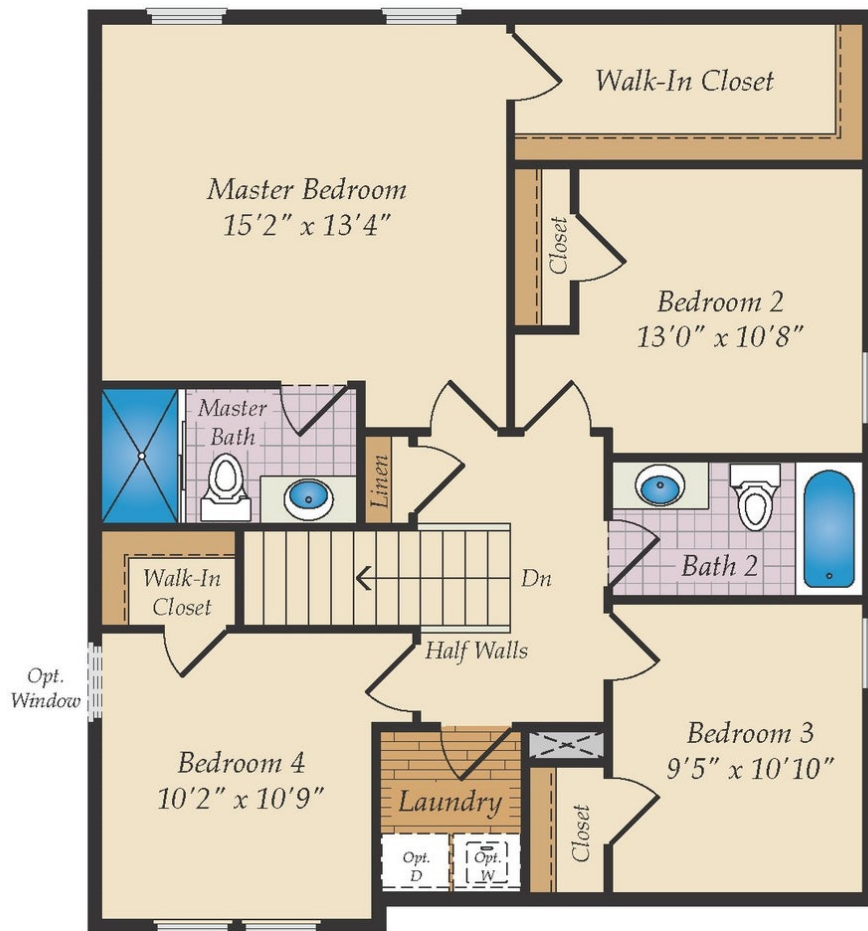


FIRST FLOOR

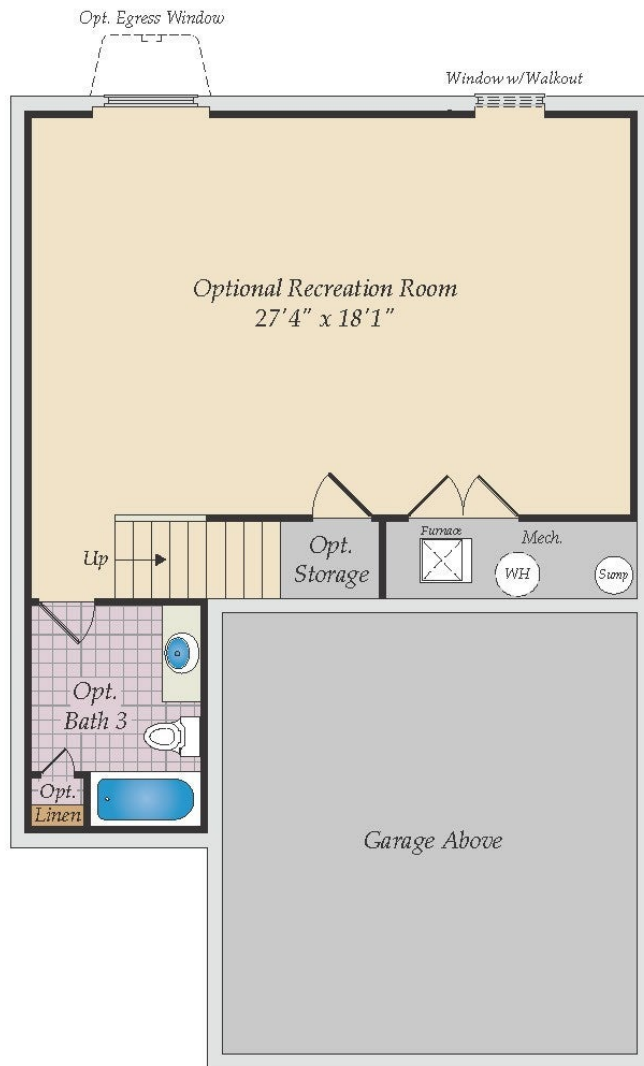


OPT. FULL BASEMENT

SECOND FLOOR



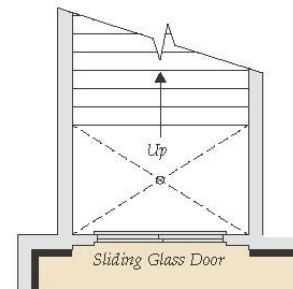
OPTIONAL BASEMENT



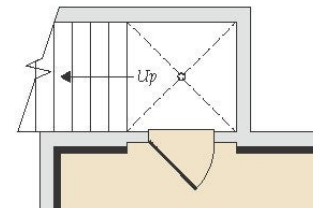
OPT. FINISHED BASEMENT



OPT. WALKOUT BASEMENT



OPT. DOUBLE DOOR AREAWAY



OPT. SINGLE DOOR AREAWAY