



**3 - 4 Beds**

**2.5 - 4.5 Baths**

**1,982 - 3,314 Sq Ft**

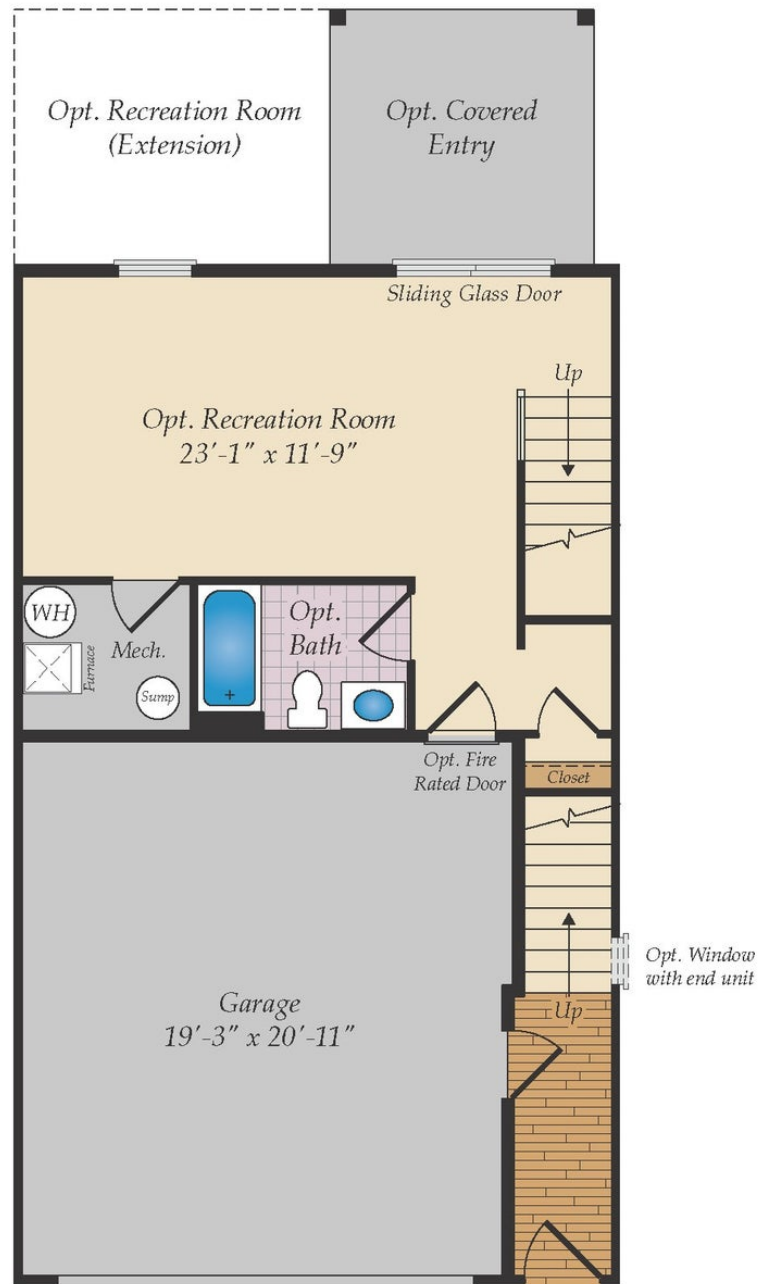
The Patuxent is a two-car garage townhome with a modern open floor plan and up to 3,314 square feet of living space. The front load plan comes standard with 3 bedrooms and 2.5 baths. The garage level has additional space that can be used as unfinished storage or can be finished with a rec room and full bath. The main level features a central kitchen with a huge center island that is open to the dining room and great room. Upgrade this space by adding a fireplace in the great room, a covered deck and even a sunroom! Upstairs, the Owner's Suite offers an ensuite bath and walk-in closet. There are options to add a second walk-in closet, a spa bath and a vaulted ceiling. Two additional bedrooms, a hall bath and laundry room complete this level. Need more space? A fourth level can be added with a loft, rooftop terrace and an extra bedroom and full bath. Choose from a variety of luxury finishes to personalize the home and make it your own!

The Patuxent is our newest townhome plan and a model is currently under construction. Photos of a similar townhome are shown for representation only.

## Available Elevations

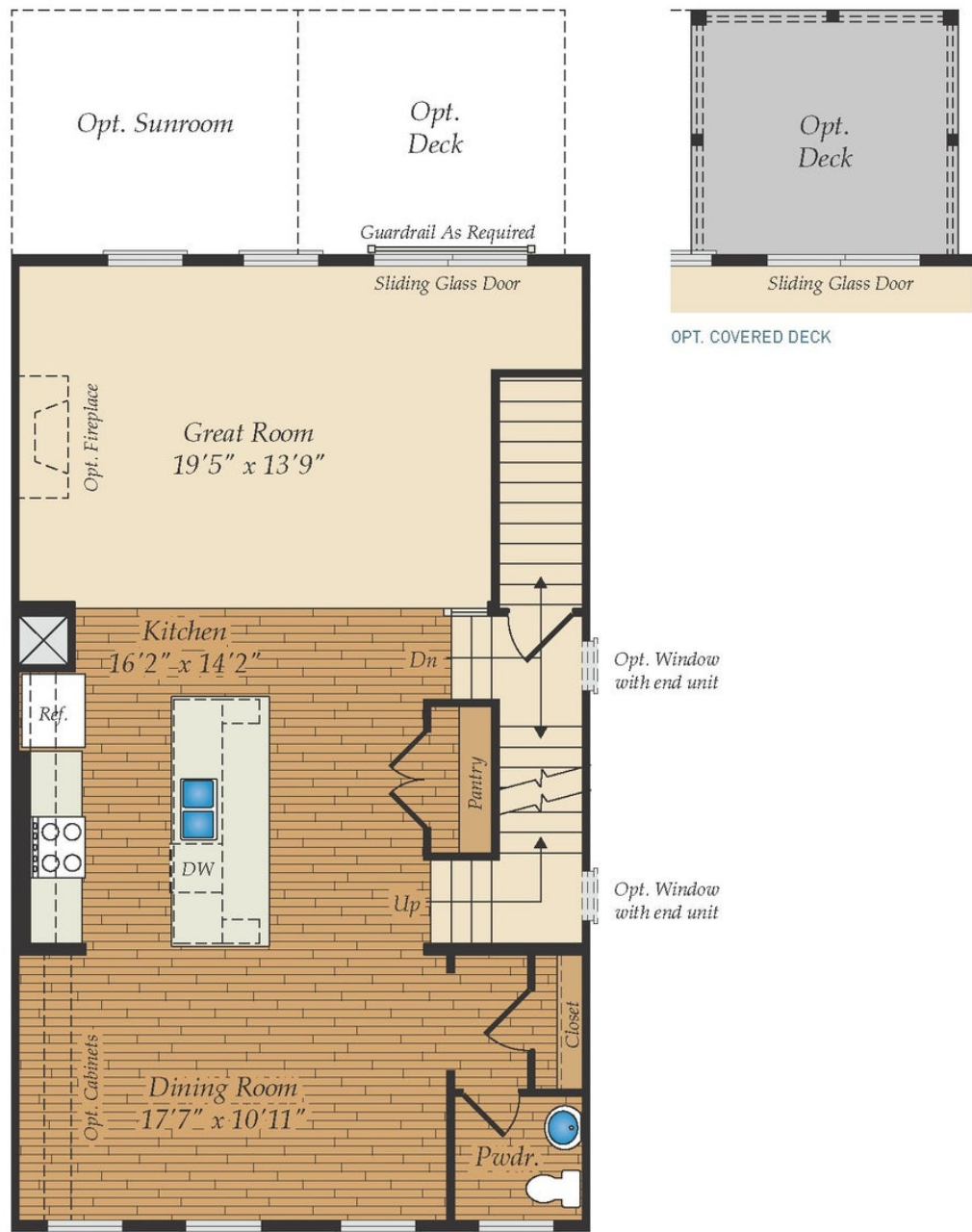


## LOWER LEVEL

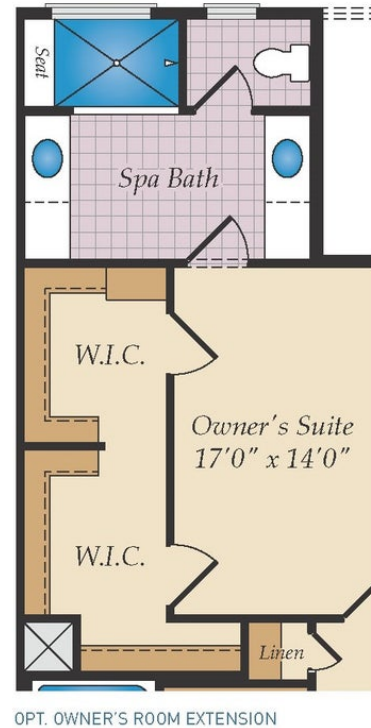
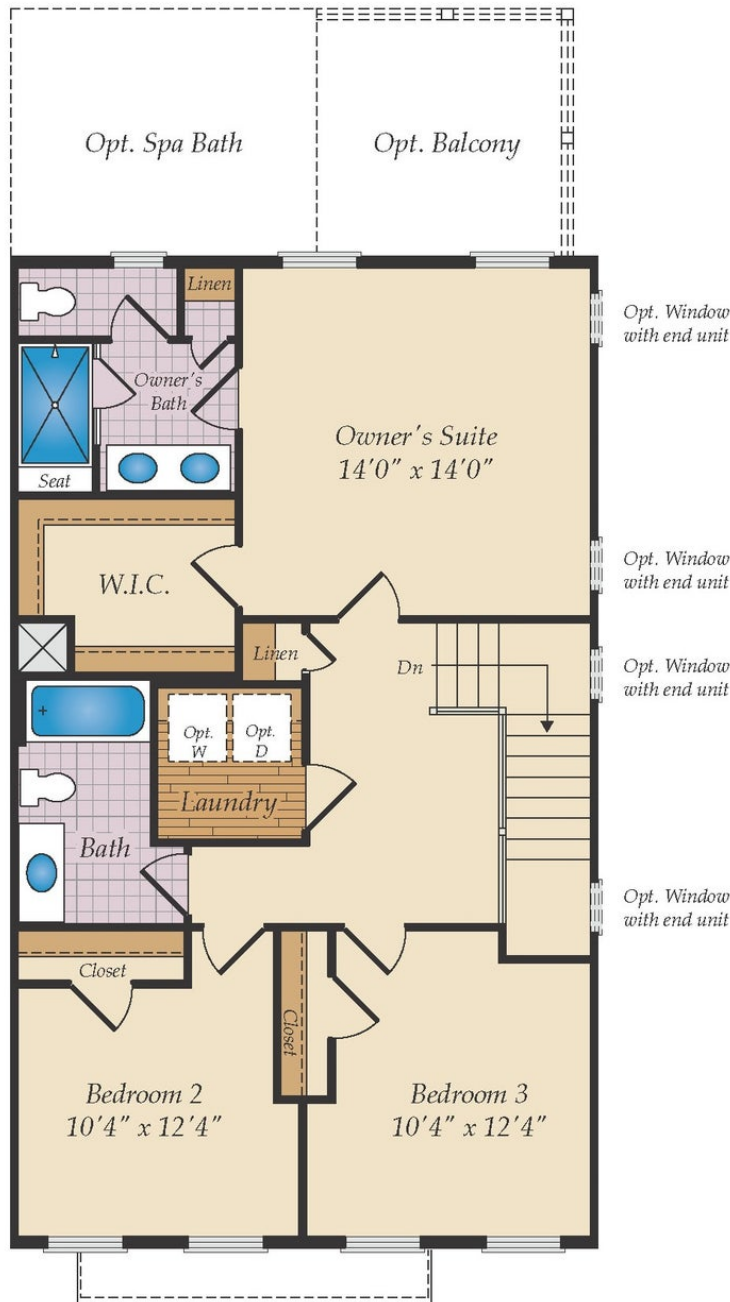


OPT. FINISHED LOWER LEVEL

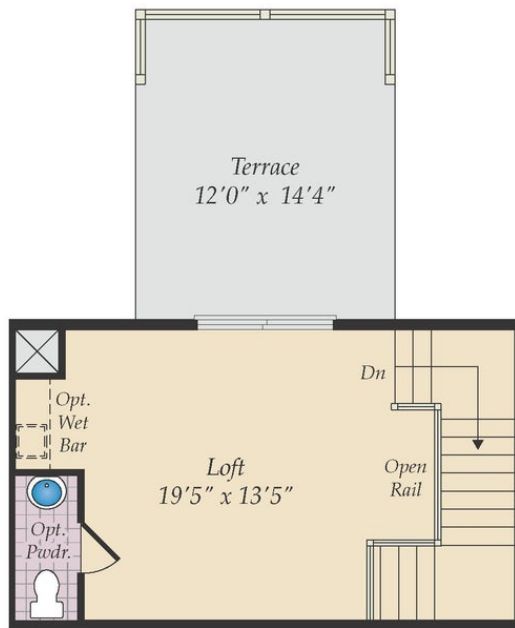
## FIRST FLOOR



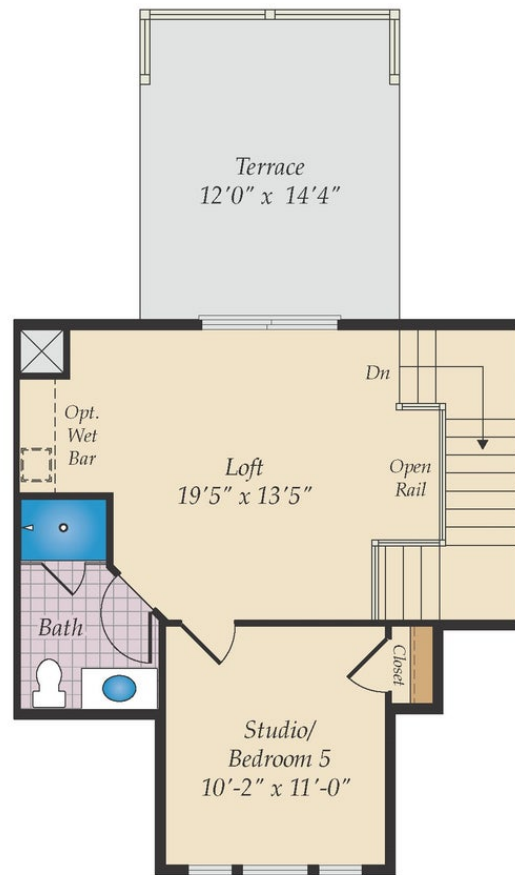
## SECOND FLOOR



## OPTIONAL THIRD LEVEL



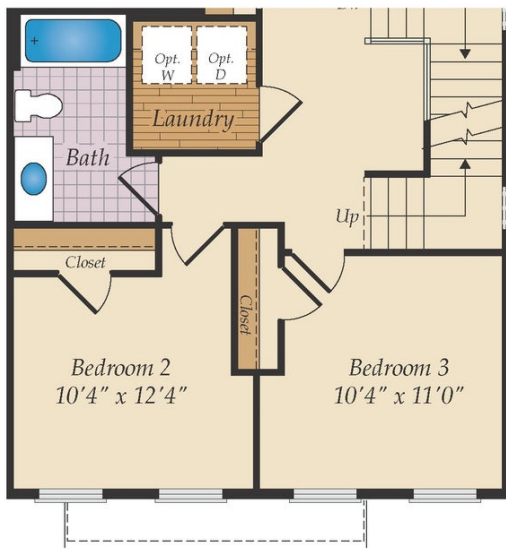
OPT. FINISHED LOFT



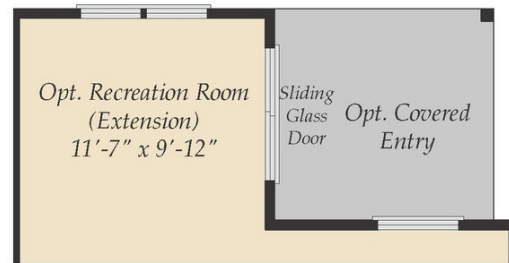
OPT. LOFT SUITE



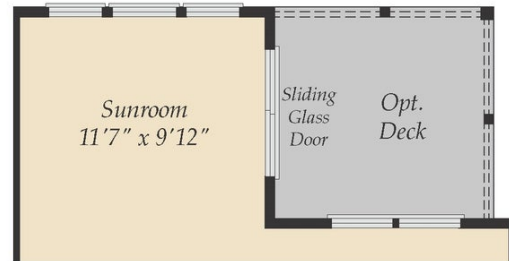
## OTHER OPTIONS



SECOND FLOOR PLAN W/ OPT. THIRD LEVEL



OPT. BASEMENT EXTENSION



OPT. SUNROOM IN THE FIRST FLOOR PLAN



OPT. OWNER'S BALCONY