



3 - 5 Beds

2.5 - 4.5 Baths

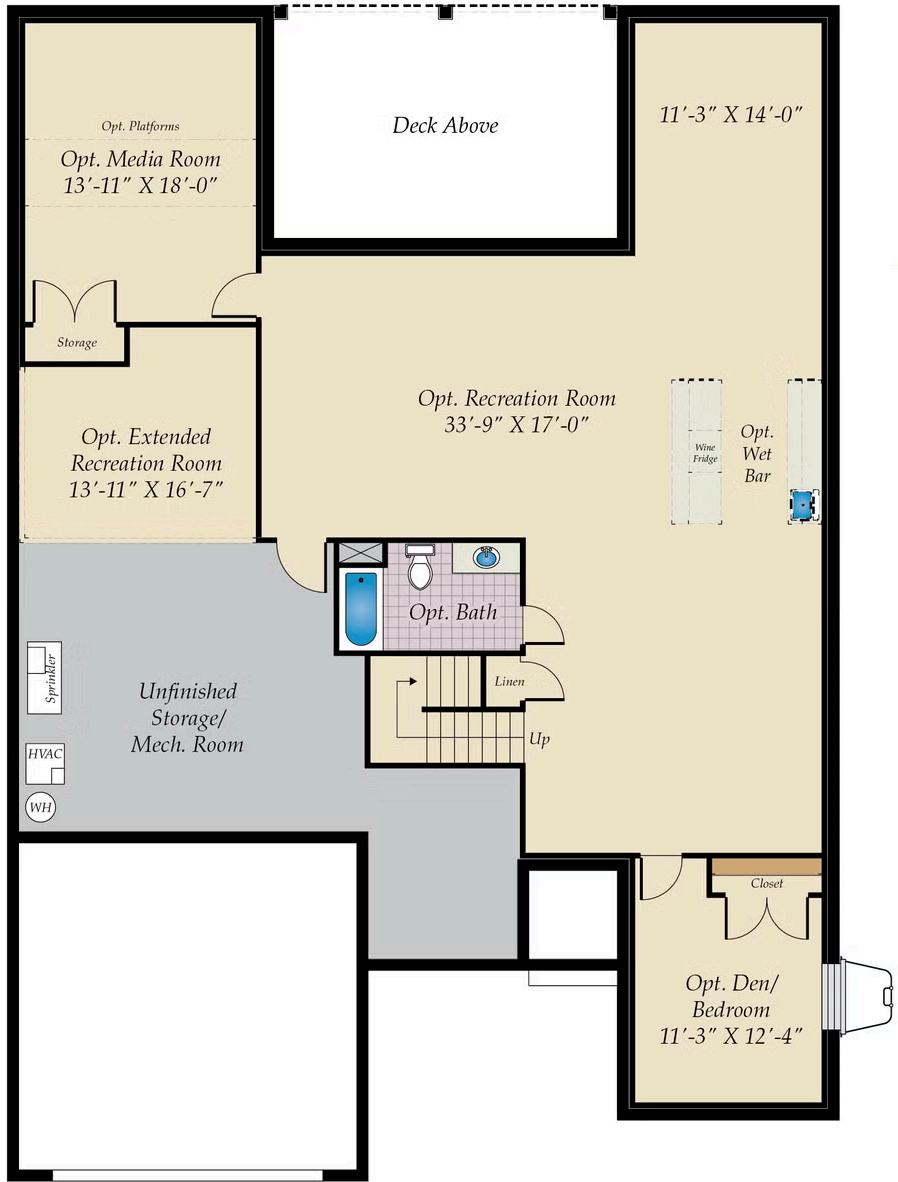
2,513 - 6,044 Sq Ft

The Panorama is one of our newest homes that is part of our First Floor Owners Suite series. The layout features one-level living with an open floorplan, expansive owner suite, covered porch, and two additional bedrooms. Add a second floor loft for additional space and storage. The Panorama also has the option to upgrade to a 3 car garage, perfect for those who want to store a third vehicle, a golf cart or just need extra space for sports equipment. Plenty of additional features such as an extra bedroom, gourmet kitchen, a freestanding tub, and more are available to personalize this home.

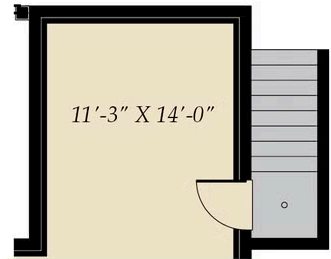
Available Elevations



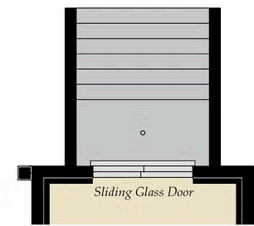
BASEMENT



OPT. FINISHED BASEMENT



OPT. SINGLE AREAWAY

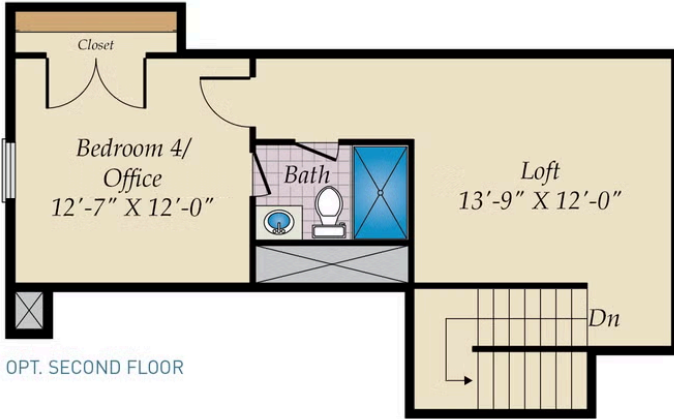


OPT. DOUBLE AREAWAY

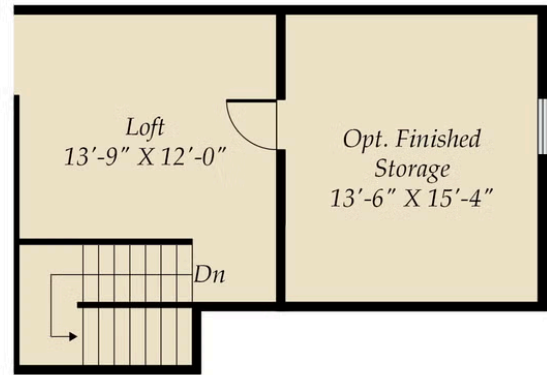


OPT. WALKOUT BASEMENT

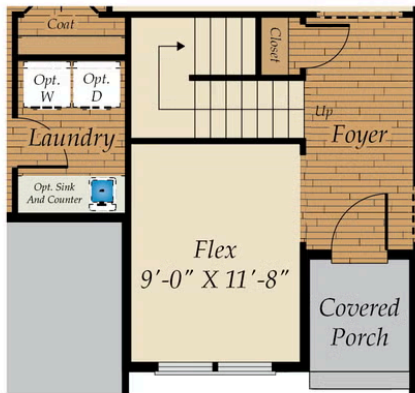
OPT. SECOND FLOOR & OTHER OPTIONS



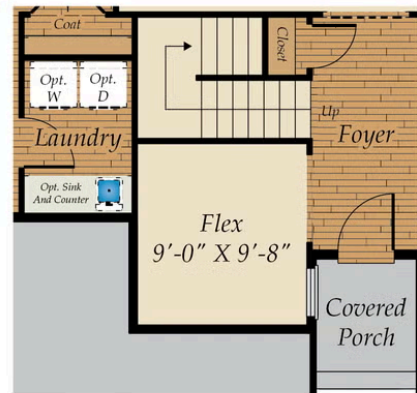
OPT. SECOND FLOOR



OPT. FINISHED STORAGE



FIRST FLOOR W/OPT. 2ND FLOOR & 2-CAR GARAGE



FIRST FLOOR W/OPT. 2ND FLOOR & 3-CAR GARAGE

Brick/stone fronts, chimneys, bay windows, keystones, exterior trim, garage doors, light fixtures, dormers, and gables shown on elevations are optional features. Actual product specifications may vary in dimension or detail from these drawings. This insert is for illustrative purposes only and is not part of the legal contract. All dimensions are approximate. Many available options are not shown.

FIRST FLOOR



Brick/stone fronts, chimneys, bay windows, keystones, exterior trim, garage doors, light fixtures, dormers, and gables shown on elevations are optional features. Actual product specifications may vary in dimension or detail from these drawings. This insert is for illustrative purposes only and is not part of the legal contract. All dimensions are approximate. Many available options are not shown.