



4 - 5 Beds

2.5 - 4 Baths

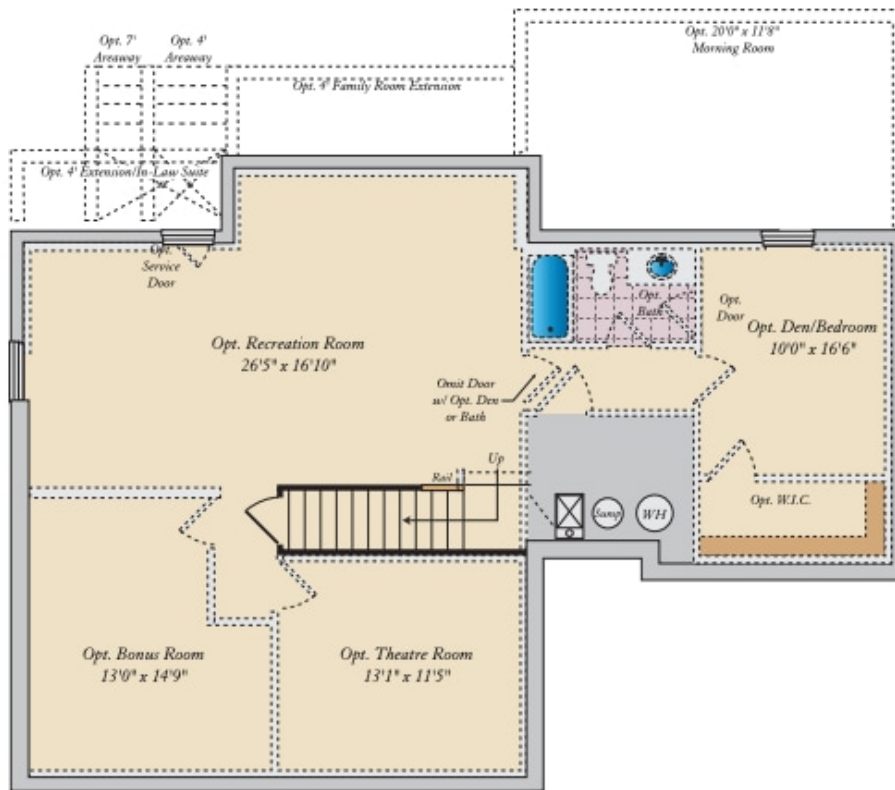
2,609 - 4,787 Sq Ft

The Oxford plan is a single family floor plan starting at 2,609 sq. ft. with the capability of up to 4,787 sq. ft. and up to 5 bedrooms. Choose from hundreds of luxury options and finishes to design a home that is uniquely yours. All our popular features are available such as a gourmet kitchen, stone or modern fireplaces, in-law suite, California spa bath, and basements made for entertaining with theater room, wet bar and much more!

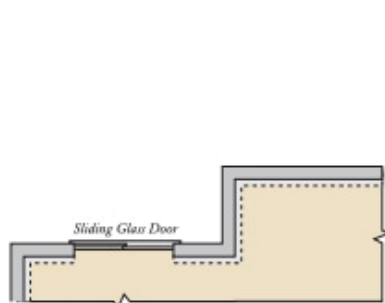
Available Elevations



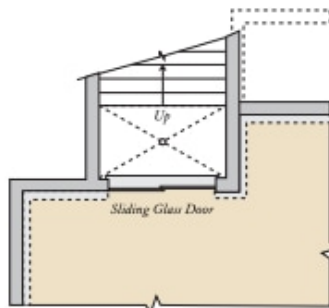
BASEMENT



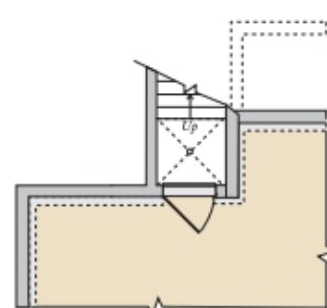
OPT. FINISHED LOWER LEVEL



OPT. WALKOUT



OPT. DOUBLE AREAWAY

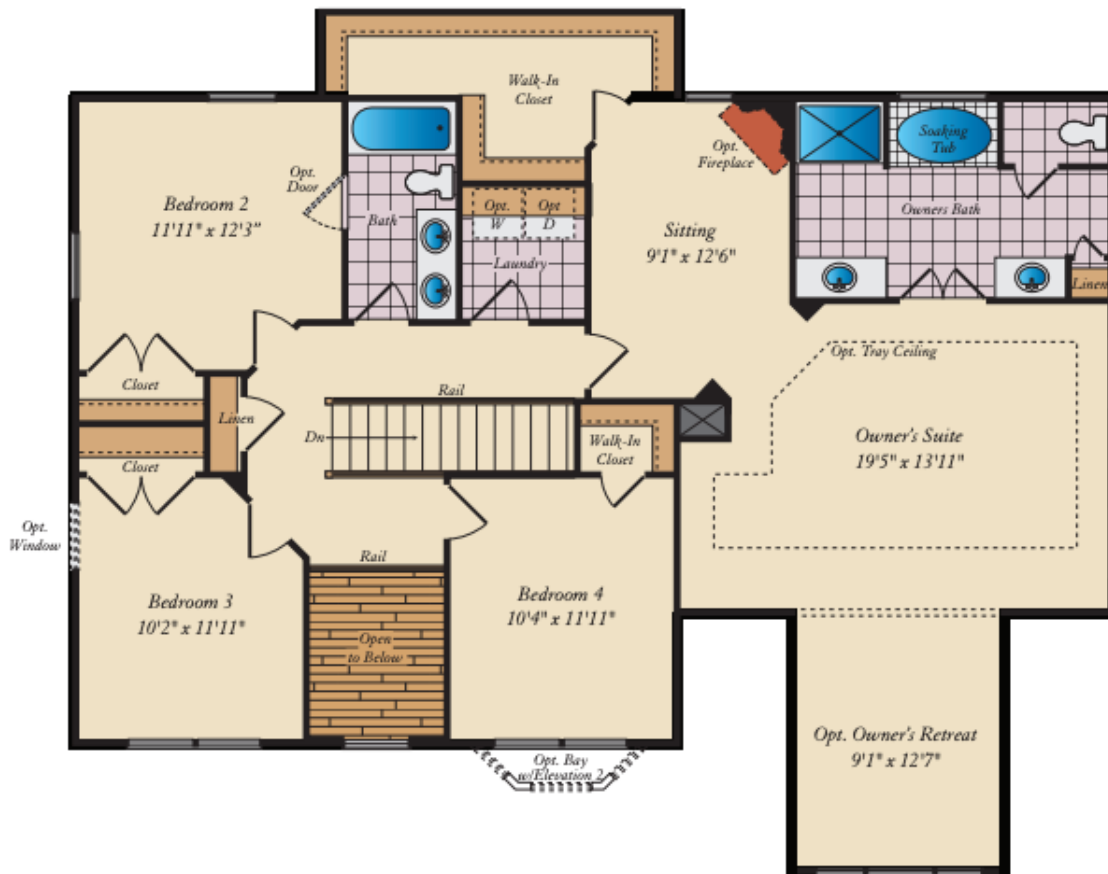
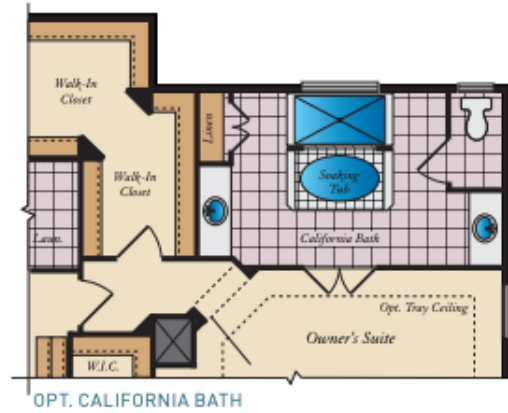


OPT. SINGLE AREAWAY

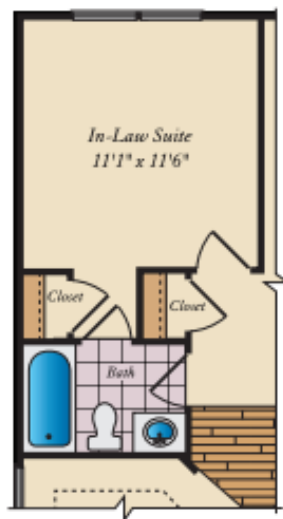
FIRST FLOOR



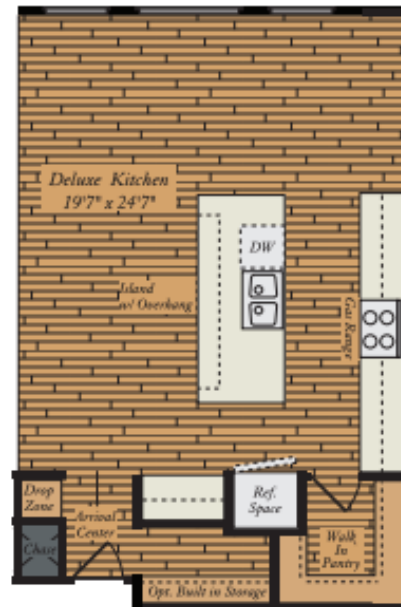
SECOND FLOOR



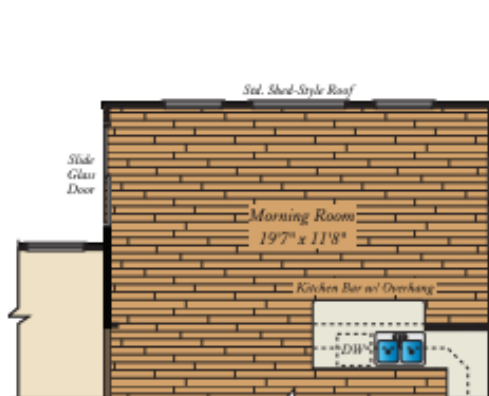
OTHER OPTIONS FIRST FLOOR PLAN



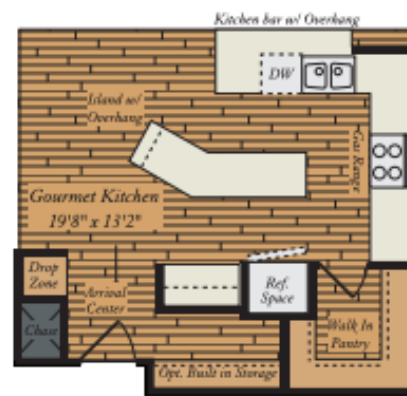
OPT. IN-LAW SUITE



OPT. STANDARD DELUXE KITCHEN



OPT. LARGE MORNING ROOM



OPT. GOURMET KITCHEN
W/ MORNING ROOM